
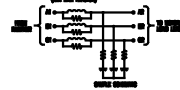


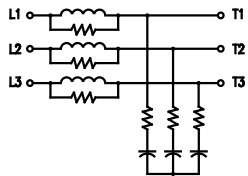
PERFORMANCE AND PROTECTION FOR DRIVES.	
Trans-Coil, Inc. Milwaukee, WI www.transcoil.com 800-524-6282	KLCUL Output Filter KLCUL80A 3PH, 60HZ, 600V Max, 80A Max Desig #: 10122800 Schematic #: 25389 Enclosure type: OPEN
[DATE CODE]	

TCI TRANS-COIL, INC.
 MILWAUKEE, WISCONSIN
 (414) 357-4480
 FAX (414) 357-4484

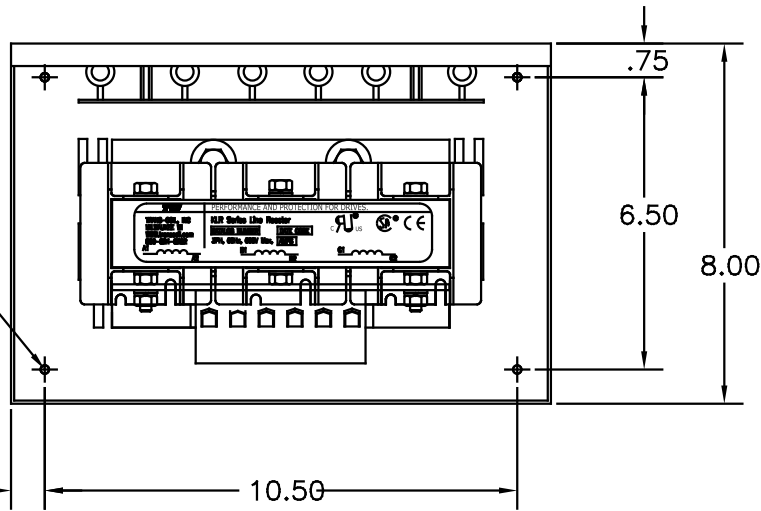


dV/dtGUARD
 KLC OUTPUT FILTER

WIRING DIAGRAM

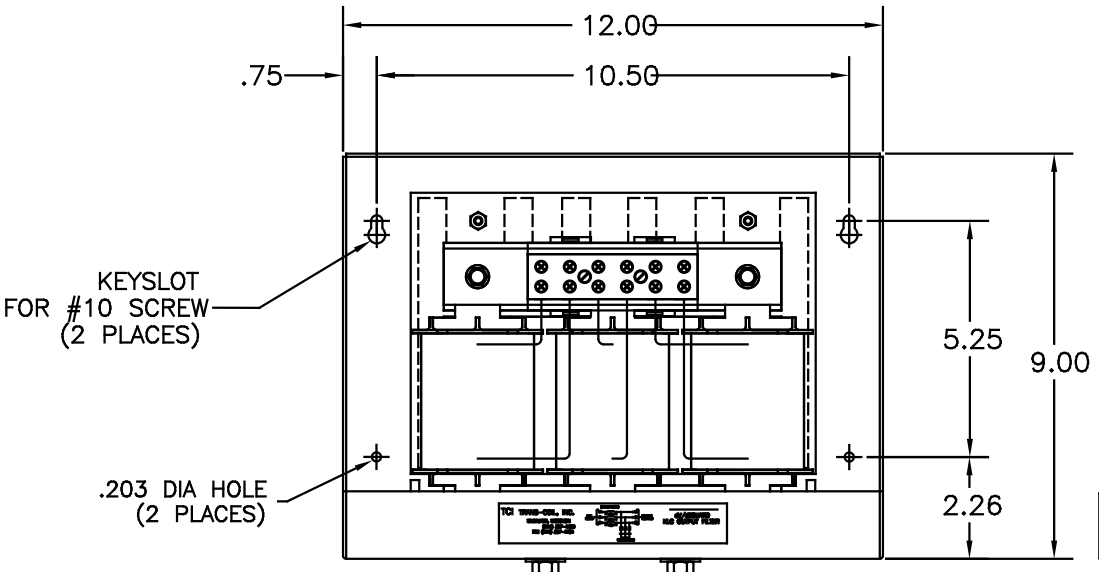


.187 DIA HOLE
 (4 PLACES)



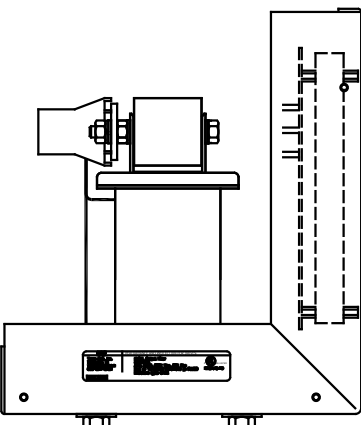
CATALOG NO.	KLCUL80A
VOLTS	480
AMPS	80
KLR PART NO.	KLR80BTB
KLR BOARD NO.	16841
APPROX. WT.-LBS	30
BLOCK WIRE RANGE FOR REACTOR AND TIGHTENING TORQUE.	1-4 AWG 35 IN-LB 6-14 AWG 30 IN-LB 16-20 AWG 25 IN-LB 22 AWG 20 IN-LB AL OR CU.

SEE: KLC/KLCUL INSTALLATION GUIDE.
 TCI# 25389



KEYSLOT FOR #10 SCREW
 (2 PLACES)

.203 DIA HOLE
 (2 PLACES)



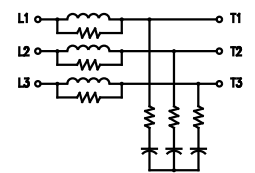
NOTE: CABINET
 MATERIAL: #16 GA STEEL.
 FINISH: COLOR, BEIGE.

PERFORMANCE AND PROTECTION FOR DRIVES.	
Trans-Coil, Inc. Milwaukee, WI www.transcoil.com 800-824-8282	KLCUL Output Filter KLCUL80A 3PH, 60HZ, 600V Max, 80A Max Dwg #: 101228DG Schematic #: 25389 Enclosure type: OPEN
DATE CODE:	UL LISTED

TCI TRANS-COIL, INC.
MILWAUKEE, WISCONSIN
(414) 357-4480
FAX (414) 357-4484

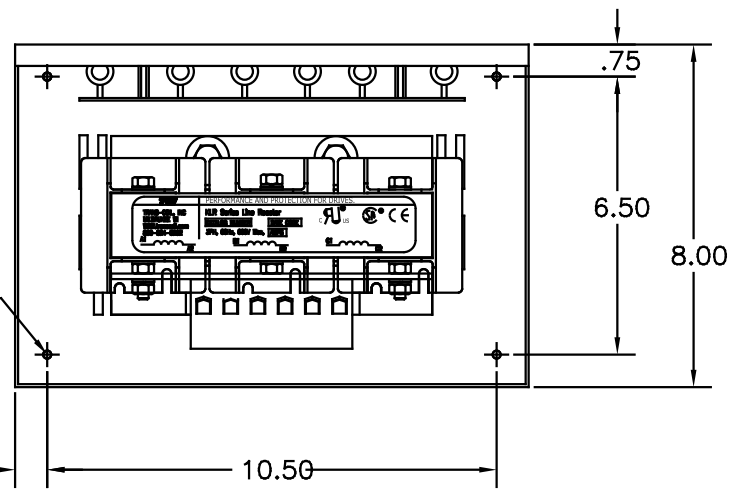
dV/dt GUARD
KLC OUTPUT FILTER

WIRING DIAGRAM

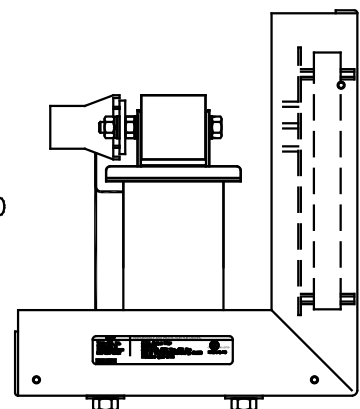
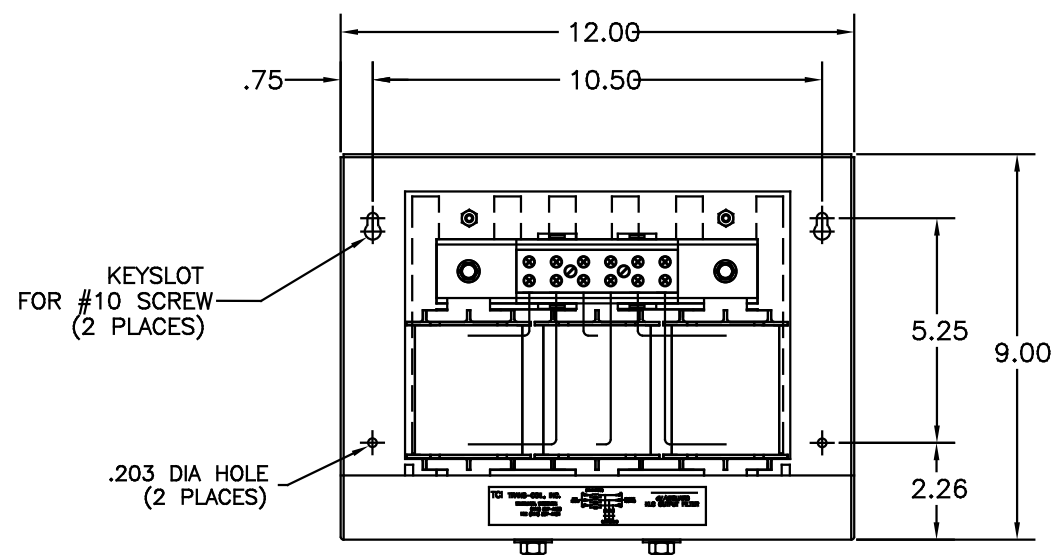


.187 DIA HOLE
(4 PLACES)

SEE: KLC/KLCUL INSTALLATION GUIDE.
TCI# 25389



CATALOG NO.	KLCUL80A
VOLTS	480
AMPS	80
KLR PART NO.	KLR80BTB
KLR BOARD NO.	16841
APPROX. WT.-LBS	30
BLOCK WIRE RANGE FOR REACTOR AND TIGHTENING TORQUE.	1-4 AWG 35 IN-LB 6-14 AWG 30 IN-LB 16-20 AWG 25 IN-LB 22 AWG 20 IN-LB AL OR CU.



NOTE: CABINET
MATERIAL: #16 GA STEEL
FINISH: COLOR, BEIGE.

NO	REVISION	DATE	BY	TOLERANCES (UNLESS AS NOTED)
2455	UPDATE SCHEM	10/04/03	DSW	DECIMAL
2413	REMOVE GRD	2/15/06	DSW	.XX ±.03
2250	CORRECT WEIGHT	08/28/03	DSW	.XXX±.01
2233	LABEL CHANGE	04/30/03	DSW	FRACTIONAL ± 1/32
2189	CORRECT CAB DIM	07/12/03	DSW	ANGULAR ± 1/2°

	7878 N. 86th STREET MILWAUKEE, WI 53224
TCI, KLCUL OPEN OUTPUT FILTER, 480V, KLCUL80A	
DSW DATE 03/31/00 SCALE 1:2	DSW DATE 03/31/00 SHEET 1 OF 1