

TCI PERFORMANCE AND PROTECTION FOR DRIVES.
 Trans-Coil, Inc.
 Milwaukee, WI
 www.transcoil.com
 800-824-8282

KLCUL Output Filter
 KLCUL45A
 3PH, 60HZ, 600V Max, 45A Max
 Dwg #: 101224DG Schematic #: 25389
 Enclosure type: OPEN

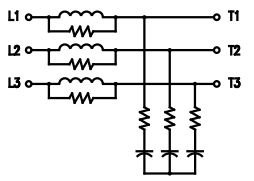
UL US LISTED
 NO. 000018 493

[DATE CODE]

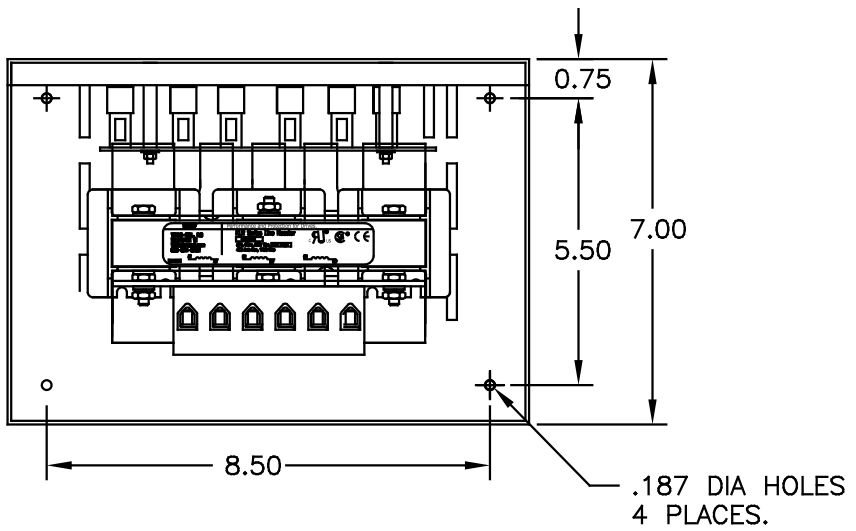
TCI TRANS-COIL, INC.
 MILWAUKEE, WISCONSIN
 (414) 357-4480
 FAX (414) 357-4484

dV/dtGUARD
 KLC OUTPUT FILTER

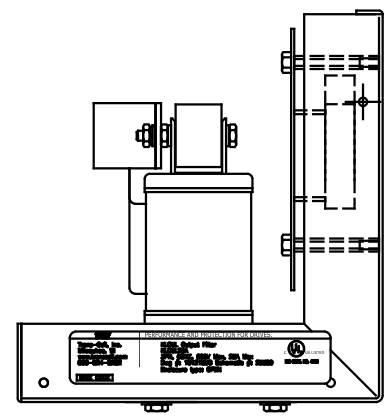
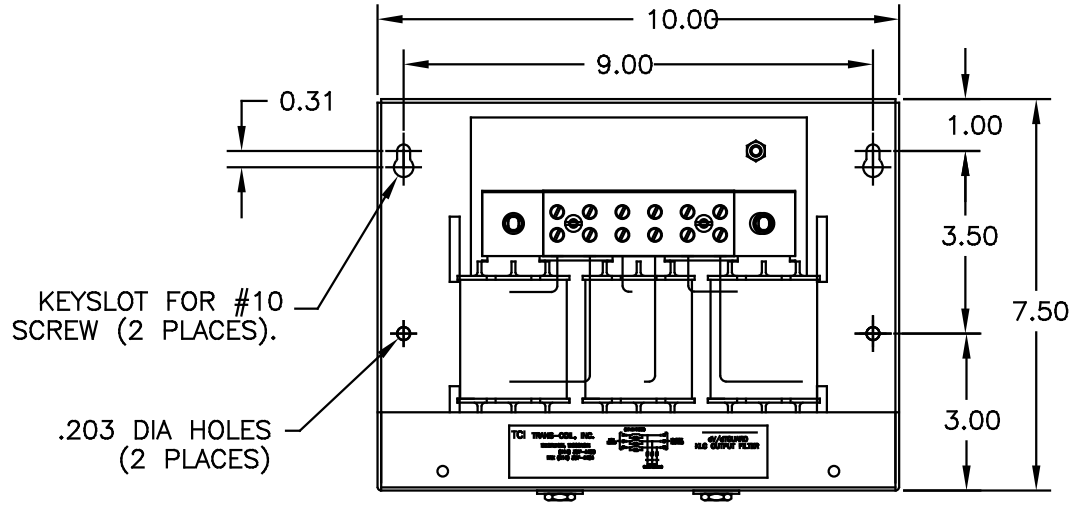
WIRING DIAGRAM



SEE: KLC/KLCUL INSTALLATION GUIDE.
 TCI# 25389



CATALOG NO.	KLCUL45A
VOLTS	480
AMPS	45
KLR PART NO.	KLR45BTB
KLR BOARD NO.	24491
APPROX. WT.-LBS	14
BLOCK WIRE RANGE	#18-#4 AWG
FOR REACTOR AND	
TIGHTENING TORQUE.	20 LB-IN



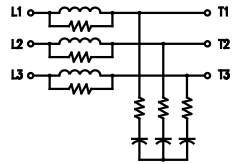
NOTE: CABINET
 MATERIAL: #16 GA STEEL.
 FINISH: COLOR, BEIGE.

	PERFORMANCE AND PROTECTION FOR DRIVES.	
	Trans-Coil, Inc. Milwaukee, WI www.transcoil.com 800-824-8282	
DATE CODE		

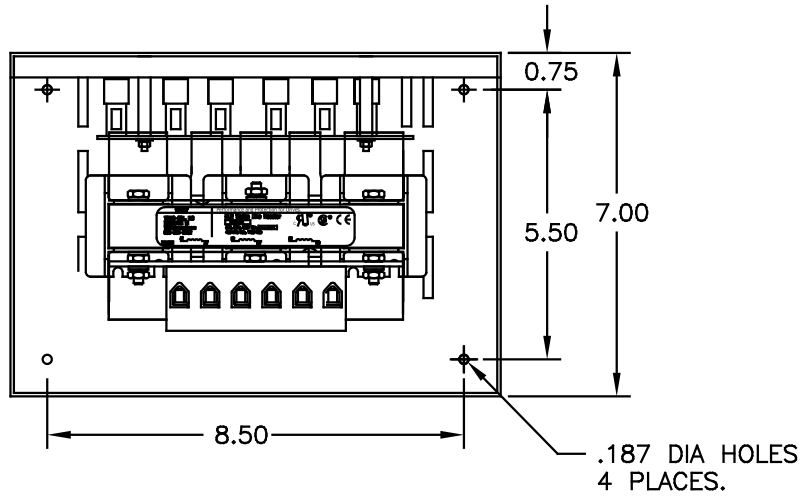
TCI TRANS-COIL, INC.
 MILWAUKEE, WISCONSIN
 (414) 357-4480
 FAX (414) 357-4484

dv/dtGUARD
 KLC OUTPUT FILTER

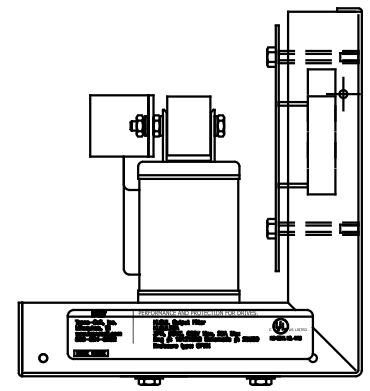
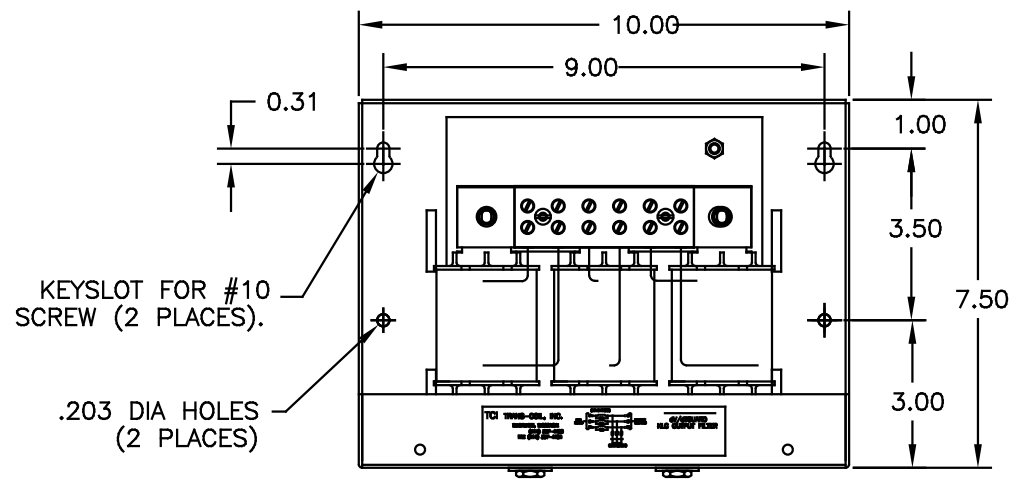
WIRING DIAGRAM



SEE: KLC/KLCUL INSTALLATION GUIDE.
 TCI# 25389



CATALOG NO.	KLCUL45A
VOLTS	480
AMPS	45
KLR PART NO.	KLR45BTB
KLR BOARD NO.	24491
APPROX. WT.-LBS	14
BLOCK WIRE RANGE	#18-#4 AWG
FOR REACTOR AND TIGHTENING TORQUE.	20 LB-IN



NOTE: CABINET
 MATERIAL: #16 GA STEEL.
 FINISH: COLOR, BEIGE.

CUSTOMER IS RESPONSIBLE FOR INSTALLATION
 TO MEET ALL NATIONAL AND LOCAL ELECTRICAL
 CODES

H2455 UPDATE SCHEM	10/04/06	DSW	TOLERANCES (UNLESS AS NOTED)		7878 N. 86th STREET MILWAUKEE, WI 53224
G2413 REMOVE GRD.	2/15/06	DSW			
F2326 UPDATE BOARD	07/25/08	DSW	.XX ±.03	TCI, KLCUL OPEN OUTPUT FILTER, 480V, KLCUL45A	Dwg. No. 101224DG Date 03/31/00 Scale 1:2
E2250 CORRECT WEIGHT	08/28/03	DSW	.XXX±.01		
D2233, LABEL CHANGE	04/30/03	DSW	FRACTIONAL ± 1/32		
G2189, CORRECT CAB DIM	07/12/07	DSW	ANGULAR ± 1/2"		
NO	REVISION	DATE	BY		Dwg. No. 101224DG Date 03/31/00 Scale 1:2