

**TCI** PERFORMANCE AND PROTECTION FOR DRIVES.  
 Trans-Coil, Inc.  
 Milwaukee, WI  
 www.transcoil.com  
 800-824-8282

KLCUL Output Filter  
 KLCUL25A  
 3PH, 60HZ, 600V Max, 25A Max  
 Dwg #: 101218DG Schematic #: 25389  
 Enclosure type: OPEN

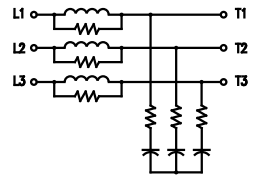
UL US LISTED  
 NO. 0001, EB, 493

[DATE CODE]

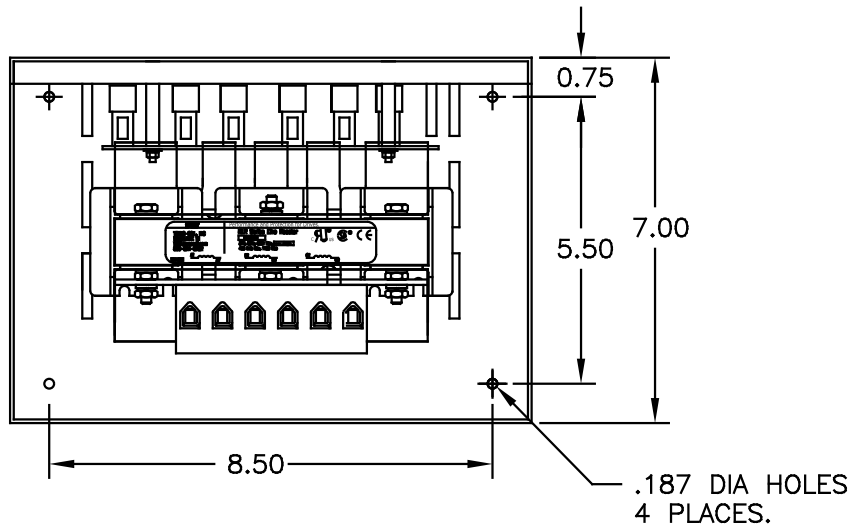
**TCI TRANS-COIL, INC.**  
 MILWAUKEE, WISCONSIN  
 (414) 357-4480  
 FAX (414) 357-4484

dV/dtGUARD  
 KLC OUTPUT FILTER

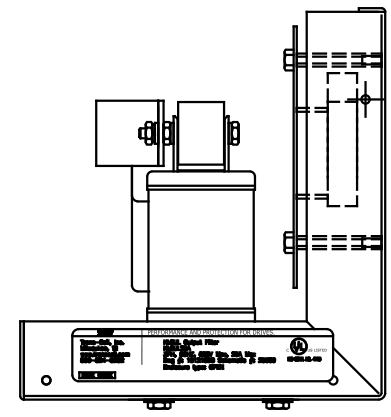
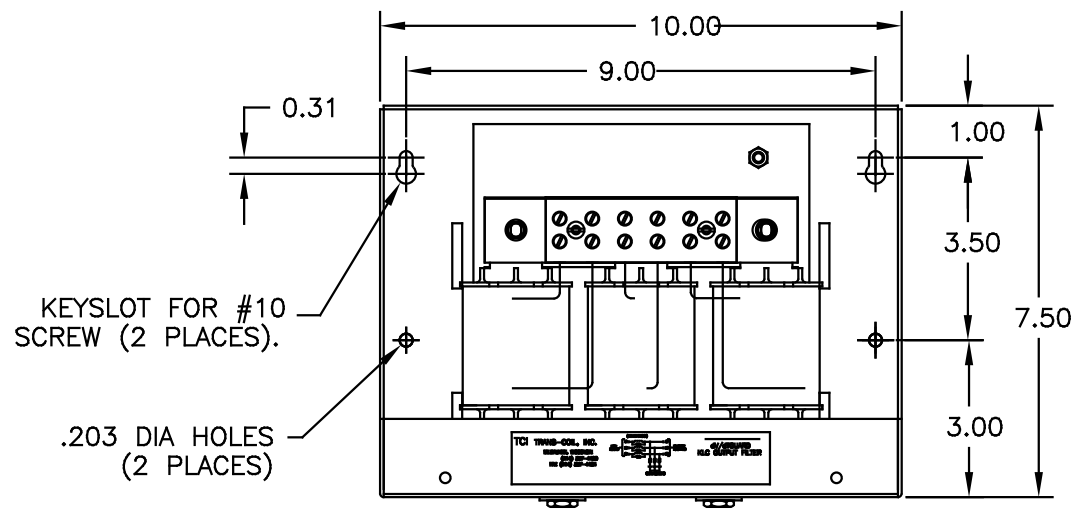
WIRING DIAGRAM




SEE: KLC/KLCUL INSTALLATION GUIDE.  
 TCI# 25389



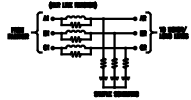
CATALOG NO.	KLCUL25A
VOLTS	480
AMPS	25
KLR PART NO.	KLR25BTB
KLR BOARD NO.	24490
APPROX. WT.-LBS	13
BLOCK WIRE RANGE FOR REACTOR AND TIGHTENING TORQUE.	#18-#4 AWG 20 LB-IN



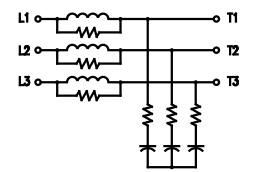
NOTE: CABINET  
 MATERIAL: #16 GA STEEL.  
 FINISH: COLOR, BEIGE.

<b>TCI</b> Trans-Coil, Inc. Milwaukee, WI www.transcoil.com 800-824-8282	PERFORMANCE AND PROTECTION FOR DRIVES.	 UL LISTED NO. ONE, ED. 478
	<b>KLCUL Output Filter</b> KLCUL25A 3PH, 60HZ, 600V Max, 25A Max Dwg #: 101218DG Schematic #: 25389 Enclosure type: OPEN	
DATE CODE:		

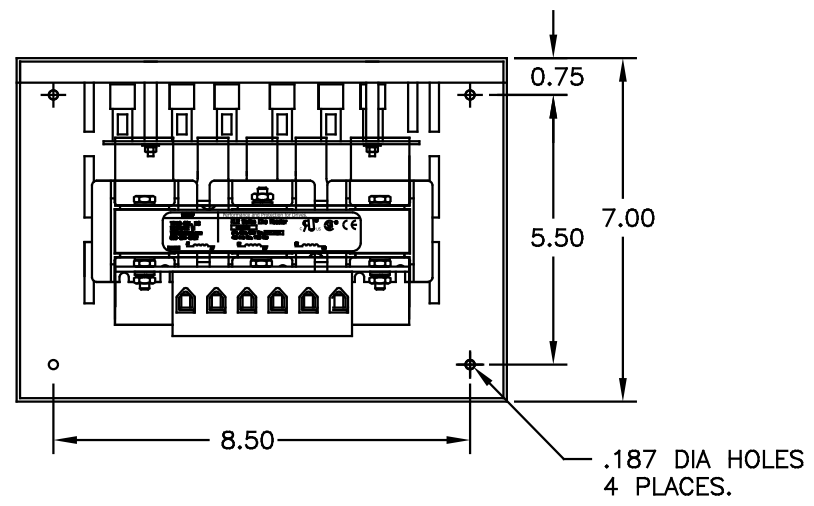
TCI TRANS-COIL, INC.  
 MILWAUKEE, WISCONSIN  
 (414) 357-4480  
 FAX (414) 357-4484



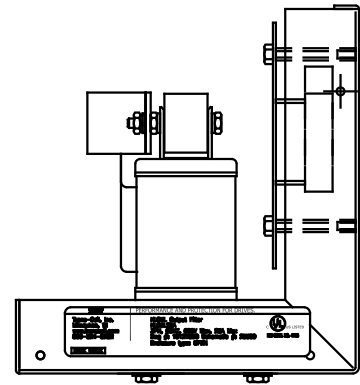
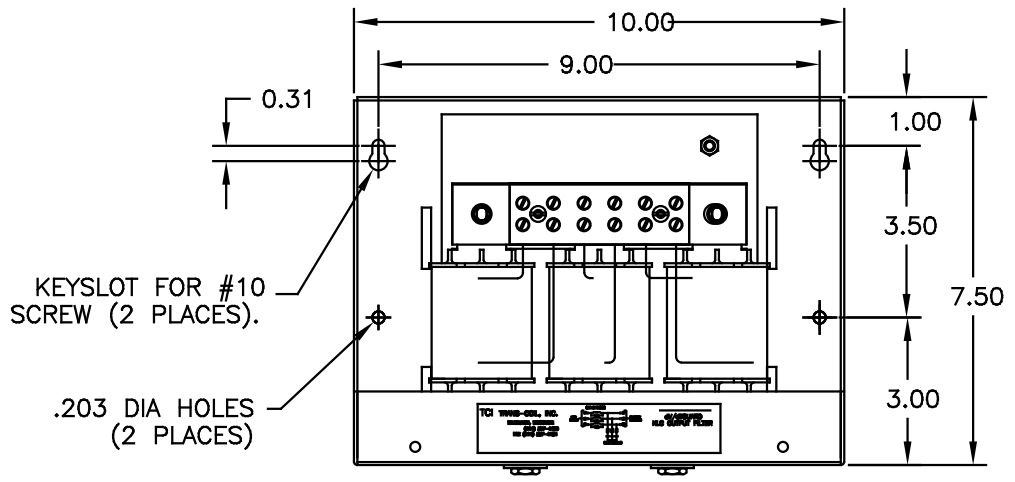
WIRING DIAGRAM



SEE: KLC/KLCUL INSTALLATION GUIDE.  
 TCI# 25389



CATALOG NO.	KLCUL25A
VOLTS	480
AMPS	25
KLR PART NO.	KLR25BTB
KLR BOARD NO.	24490
APPROX. WT.-LBS	13
BLOCK WIRE RANGE FOR REACTOR AND TIGHTENING TORQUE.	#18-#4 AWG 20 LB-IN




NOTE: CABINET  
 MATERIAL: #16 GA STEEL.  
 FINISH: COLOR, BEIGE.

CUSTOMER IS RESPONSIBLE FOR INSTALLATION TO MEET ALL NATIONAL AND LOCAL ELECTRICAL CODES

NO	REVISION	DATE	BY	TOLERANCES (UNLESS AS NOTED)	APPROVAL
2455	UPDATE SCHEM	10/04/03	DSW	DECIMAL	
F 2413,	REMOVE GRD	2/15/06	DSW	.XX ±.03	
E 2326	UPDATE BOARDS	07/022/05	DSW	.XXX±.01	
D 2233,	LABEL CHANGE	04/30/03	DSW	FRACTIONAL ± 1/32	
C 2189,	CORRECT CAB DIM	07/12/03	DSW	ANGULAR ± 1/2"	

 7878 N. 86th STREET MILWAUKEE, WI 53224	TCI, KLCUL OPEN OUTPUT FILTER, 480V, KLCUL25A
DSW DATE: 03/31/06 SCALE: 1:2	DSW DATE: 03/31/06 SHEET NO: 101218DG SHEET: 1 OF 1