

PERFORMANCE AND PROTECTION FOR DRIVES.

Trans-Coil, Inc.
Milwaukee, WI
www.transcoil.com
800-824-8282

KLCUL Output Filter
KLCUL21A
3PH, 60HZ, 600V Max, 21A Max
Dwg #: 101216DG Schematic #: 25389
Enclosure type: OPEN

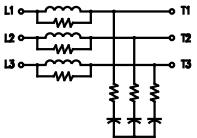
UL US LISTED
NSI 606E, LB 493

DATE CODE

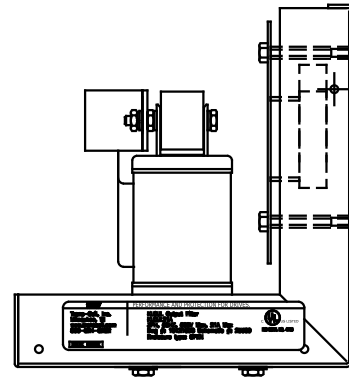
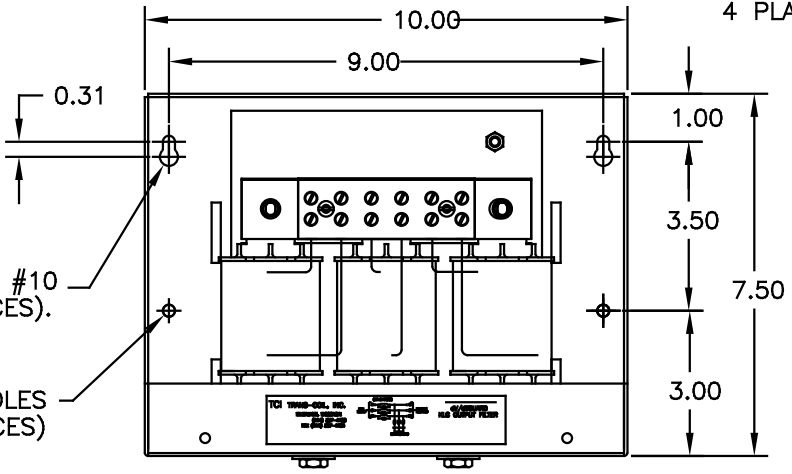
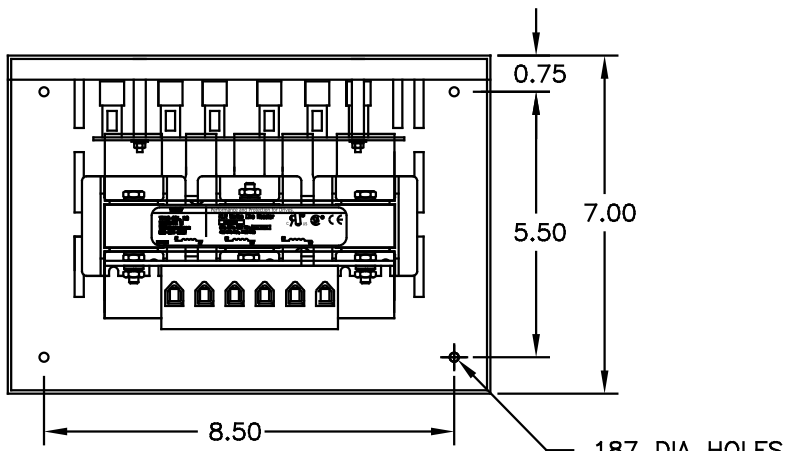
TCI TRANS-COIL, INC.
MILWAUKEE, WISCONSIN
(414) 387-4480
FAX (414) 387-4484

dV/dtGUARD
KLC OUTPUT FILTER

WIRING DIAGRAM



SEE: KLC/KLCUL INSTALLATION GUIDE.
TCI# 25389



CATALOG NO.	KLCUL21A
VOLTS	480
AMPS	21
KLR PART NO.	KLR21BTB
KLR BOARD NO.	24490
APPROX. WT.-LBS	13
BLOCK WIRE RANGE FOR REACTOR AND TIGHTENING TORQUE.	#18-#4 AWG 20 LB-IN

NOTE: CABINET
MATERIAL: #16 GA STEEL.
FINISH: COLOR, BEIGE.

CUSTOMER IS RESPONSIBLE FOR INSTALLATION
TO MEET ALL NATIONAL AND LOCAL ELECTRICAL
CODES

				TOLERANCES (EXCEPT AS NOTED)	TCI 7878 N. 86th STREET MILWAUKEE, WI 53224
				DECIMAL	
				.XX ±.03	TCI, KLCUL OPEN OUTPUT FILTER, 480V, KLCUL21A
				.XXX±.01	
				FRACTIONAL ± 1/32	DRN. BY DSW DATE 03-31-00 DRG. NO. 101216DG
G 2455 UPDATE SCHEM 10/04/06 DSW				ANGULAR ± 1/2°	SCALE 3/8"=1" APPRD. B SHT. 1 OF 1
NO	REVISION	DATE	BY		