

TCI PERFORMANCE AND PROTECTION FOR DRIVES.

Trans-Coil, Inc.
Milwaukee, WI
www.trans-coil.com
800-824-8282

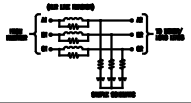
KLCUL Output Filter
KLCUL12A
3PH, 60HZ, 600V Max, 12A Max
Dwg #: 101210DG Schematic #: 25389
Enclosure type: OPEN

UL US LISTED
50 CUL. LB. 493

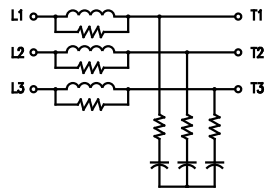
DATE CODE

TCI TRANS-COIL, INC.
MILWAUKEE, WISCONSIN
(414) 357-4480
FAX (414) 357-4484

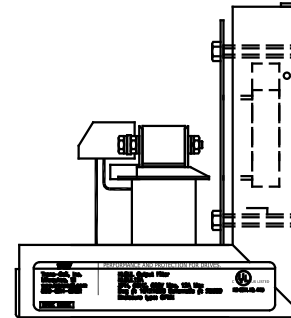
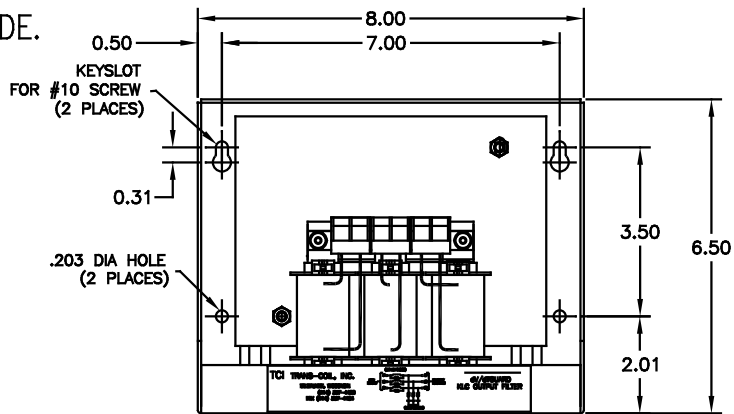
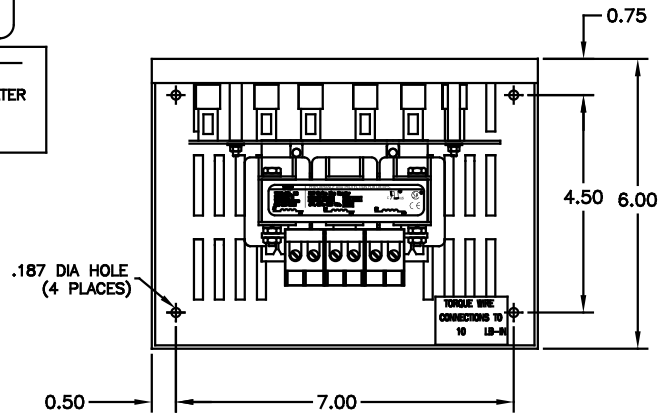
dV/dtGUARD
KLC OUTPUT FILTER



WIRING DIAGRAM



SEE: KLC/KLCUL INSTALLATION GUIDE.
TCI# 25389



CATALOG NO.	KLCUL12A
VOLTS	480
AMPS	12
KLR PART NO.	KLR12BTB
KLR BOARD NO.	24489
APPROX. WT.-LBS	6
BLOCK WIRE RANGE FOR REACTOR AND TIGHTENING TORQUE.	#12-#18 AWG 10 LB-IN

NOTE: CABINET
MATERIAL: #16 GA STEEL.
FINISH: COLOR, BEIGE.

CUSTOMER IS RESPONSIBLE FOR INSTALLATION
TO MEET ALL NATIONAL AND LOCAL ELECTRICAL
CODES

				TOLERANCES (EXCEPT AS NOTED)	TCI 7878 N. 86th STREET MILWAUKEE, WI 53224
				DECIMAL .XX ±.03 .XXX±.01	
				FRACTIONAL ± 1/32	TCI, KLCUL OPEN OUTPUT FILTER, 480V, KLCUL12A
				ANGULAR ± 1/2°	
2455	UPDATE SCHEM	10/04/08	DSW	DRN. BY	DATE
NO	REVISION	DATE	BY	SCALE	APPRD.
				3/8"=1"	03-31-00
					DWG. NO. B 101210DG
					SHT. 1 OF 1