

**TCI** PERFORMANCE AND PROTECTION FOR DRIVES.

Trans-Coil, Inc.  
Milwaukee, WI  
www.transcoil.com  
800-824-8282

KLCUL Output Filter  
KLCUL6A  
3PH, 60HZ, 600V Max, 6A Max  
Dwg #: 101206DG Schematic #: 25389  
Enclosure type: OPEN

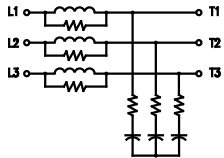
UL US LISTED  
50 CUL. IN. #13

DATE CODE

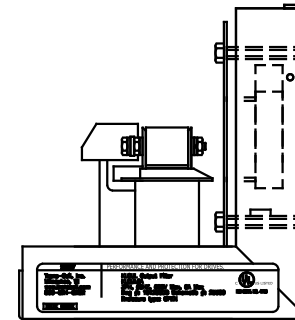
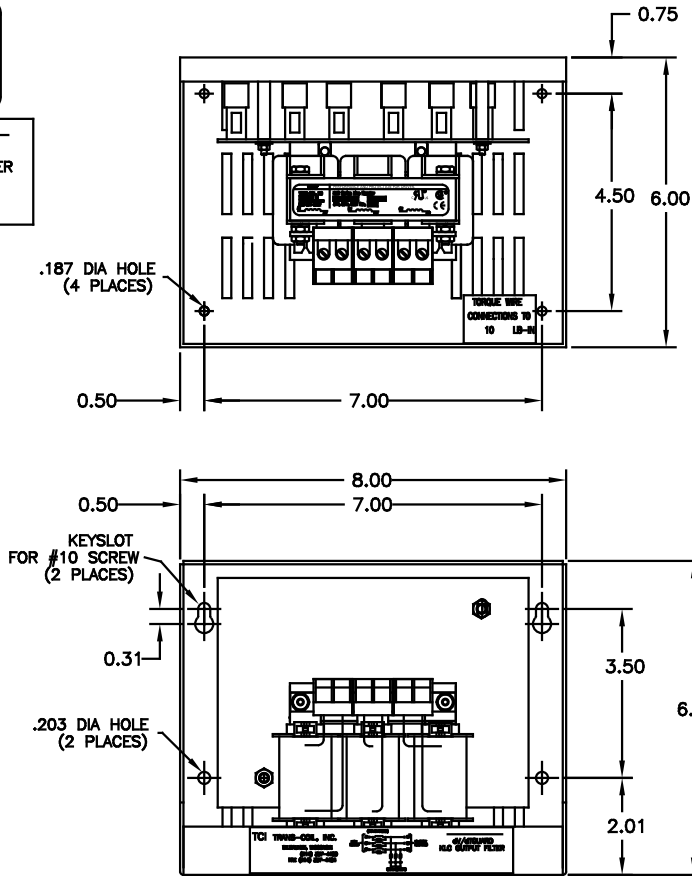
TCI TRANS-COIL, INC.  
MILWAUKEE, WISCONSIN  
(414) 357-4480  
FAX (414) 357-4484

dv/dt GUARD  
KLC OUTPUT FILTER

WIRING DIAGRAM



SEE: KLC/KLCUL INSTALLATION GUIDE.  
TCI# 25389



CATALOG NO.	KLCUL6A
VOLTS	480
AMPS	6
KLR PART NO.	KLR6BTB
KLR BOARD NO.	24680
APPROX. WT.-LBS	6
BLOCK WIRE RANGE FOR REACTOR AND TIGHTENING TORQUE.	#12-#18 AWG 10 LB-IN

CUSTOMER IS RESPONSIBLE FOR INSTALLATION TO MEET ALL NATIONAL AND LOCAL ELECTRICAL CODES

NOTE: CABINET  
MATERIAL: #16 GA STEEL.  
FINISH: COLOR, BEIGE.

				TOLERANCES (EXCEPT AS NOTED)	<b>TCI</b> 7878 N. 86th STREET MILWAUKEE, WI 53224
				DECIMAL .XX ±.03 .XXX±.01	
				FRACTIONAL ± 1/32	TCI, KLCUL OPEN OUTPUT FILTER, 480V, KLCUL6A
				ANGULAR ± 1/2°	
2455	UPDATE SCHEM	10/04/08	DSW		DRN. BY DSW DATE 03-31-08 DRG. NO. B 101206DG
NO	REVISION	DATE	BY		SCALE 3/8"=1" APPRD.