

TCI PERFORMANCE AND PROTECTION FOR DRIVES.

Trans-Coil, Inc.
Milwaukee, WI
www.transcoil.com
800-824-8282

KLCUL Output Filter
KLCUL4A
3PH, 60HZ, 600V Max, 4A Max
Dwg #: 101204DG Schematic #: 25389
Enclosure type: OPEN

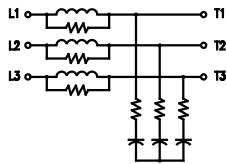
UL US LISTED
50 CUL. IN. 493

DATE CODE

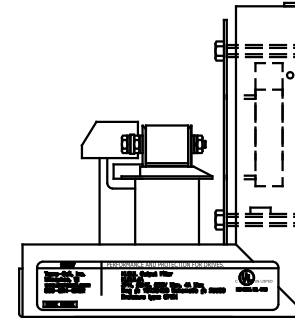
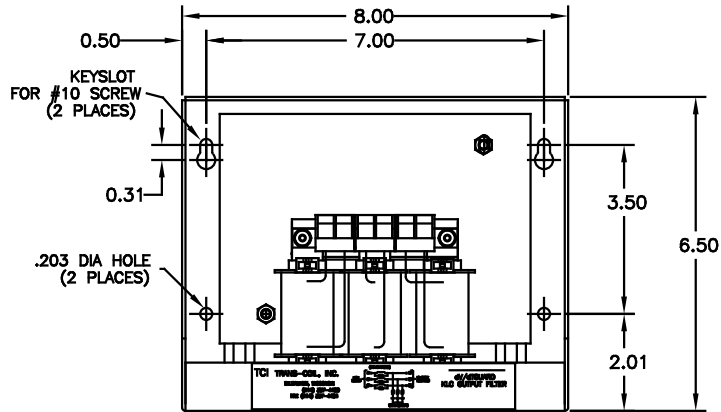
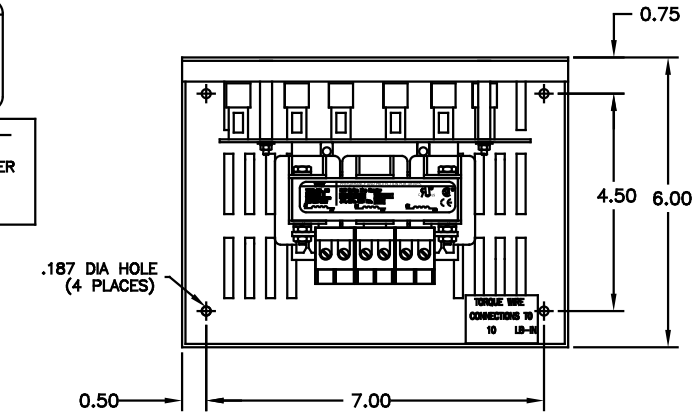
TCI TRANS-COIL, INC.
MILWAUKEE, WISCONSIN
(414) 357-4480
FAX (414) 357-4484

dV/dt/GUARD
KLC OUTPUT FILTER

WIRING DIAGRAM



SEE: KLC/KLCUL INSTALLATION GUIDE.
TCI# 25389



CATALOG NO.	KLCUL4A
VOLTS	480
AMPS	4
KLR PART NO.	KLR4BTB
KLR BOARD NO.	24680
APPROX. WT.-LBS	6
BLOCK WIRE RANGE FOR REACTOR AND TIGHTENING TORQUE.	#12-#18 AWG 10 LB-IN

CUSTOMER IS RESPONSIBLE FOR INSTALLATION TO MEET ALL NATIONAL AND LOCAL ELECTRICAL CODES

NOTE: CABINET MATERIAL: #16 GA STEEL. FINISH: COLOR, BEIGE.

				TOLERANCES (EXCEPT AS NOTED)	TCI 7878 N. 86th STREET MILWAUKEE, WI 53224
				DECIMAL .XX ±.03 .XXX±.01	
				FRACTIONAL ± 1/32	TCI, KLCUL OPEN OUTPUT FILTER, 480V, KLCUL4A
				ANGULAR ± 1/2°	
2455	UPDATE SCHEM.	10/04/08	DSW		DRN. BY DSW DATE 03-31-08 DRG. NO. B 101204DG
NO	REVISION	DATE	BY		SCALE 3/8"=1" APPRD.