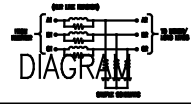


**TCI** PERFORMANCE AND PROTECTION FOR DRIVES.  
 Trans-Coil, Inc.  
 Milwaukee, WI  
 www.transcoil.com  
 800-824-8282  
 DATE CODE:

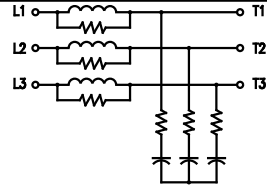
KLCUL Output Filter  
 KLCUL3A  
 3PH, 60HZ, 600V Max, 3A Max  
 Dwg #: 101202DG Schematic #: 25389  
 Enclosure type: OPEN



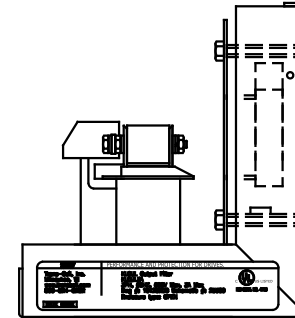
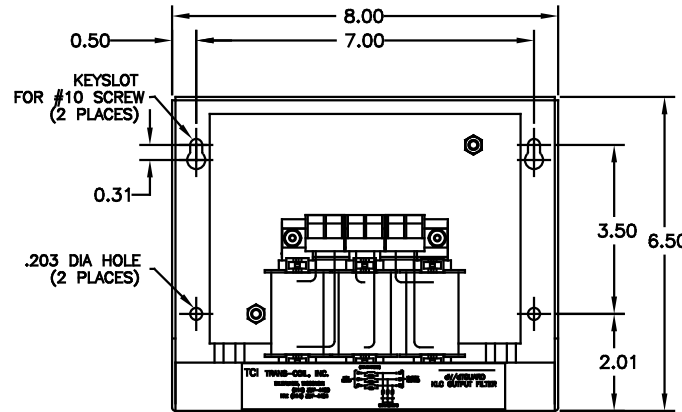
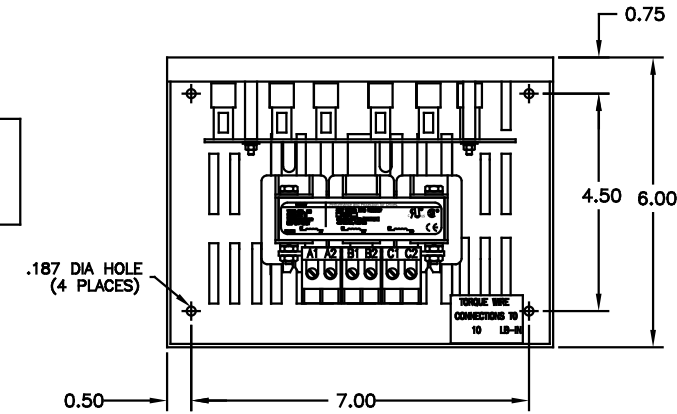
**TCI TRANS-COIL, INC.**  
 MILWAUKEE, WISCONSIN  
 (414) 352-1100  
 FAX (414) 352-1101



dv/dtGUARD  
 KLC OUTPUT FILTER



SEE: KLC/KLCUL INSTALLATION GUIDE.  
 TCI# 25389



CATALOG NO.	KLCUL3A
VOLTS	480
AMPS	3
KLR PART NO.	KLR3BTB
KLR BOARD NO.	24680
APPROX. WT.-LBS	6
BLOCK WIRE RANGE FOR REACTOR AND TIGHTENING TORQUE.	#12-#18 AWG 10 LB-IN

CUSTOMER IS RESPONSIBLE FOR INSTALLATION  
 TO MEET ALL NATIONAL AND LOCAL ELECTRICAL  
 CODES

NOTE: CABINET  
 MATERIAL: #16 GA STEEL.  
 FINISH: COLOR,BEIGE.

					<b>TOLERANCES</b> (EXCEPT AS NOTED) DECIMAL .XX ±.03 .XXX±.010 FRACTIONAL ± 1/16 ANGULAR ± 1/2°	7878 N. 86th STREET MILWAUKEE, WI 53224 <b>KLCUL OPEN OUTPUT FILTER</b> TCI, 480V, KLCUL3A
2455 UPDATE SCHEM NO REVISION	10/4/06 DATE	DSW BY	DSW DRN. BY	03-31-06 DATE	B 101202DG DRG. NO.	