

**TCI** PERFORMANCE AND PROTECTION FOR DRIVES.

Trans-Coil, Inc.  
Milwaukee, WI  
www.transcoil.com  
800-824-8282

KLCUL Output Filter  
KLCUL2A  
3PH, 60HZ, 600V Max, 2A Max  
Dwg #: 101200DG Schematic #: 25389  
Enclosure type: OPEN

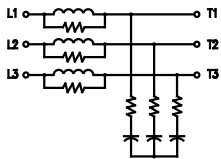
UL LISTED  
50 CUL. IN. 493

DATE CODE

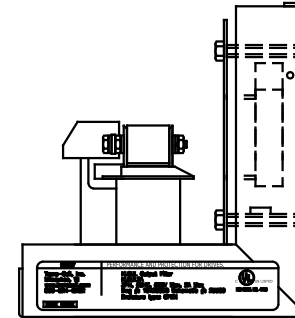
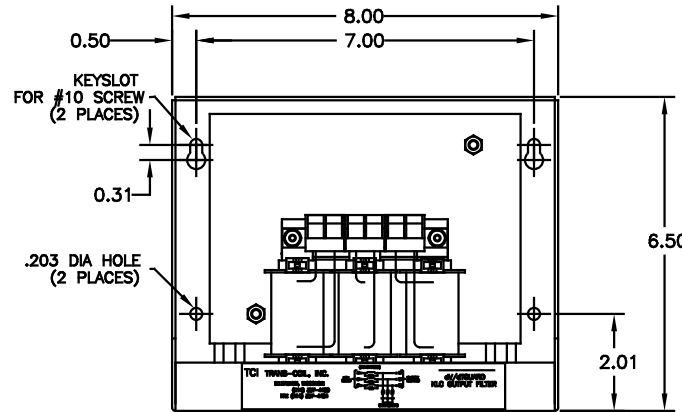
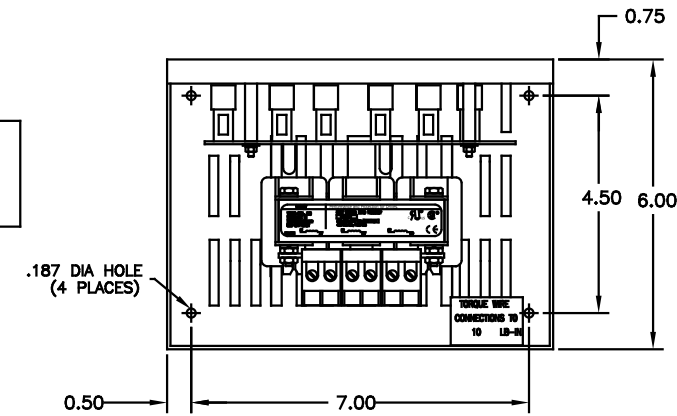
TCI TRANS-COIL, INC.  
MILWAUKEE, WISCONSIN  
(414) 357-4480  
FAX (414) 357-4484

dv/dtGUARD  
KLC OUTPUT FILTER

WIRING DIAGRAM



SEE: KLC/KLCUL INSTALLATION GUIDE.  
TCI# 25389



CATALOG NO.	KLCUL2A
VOLTS	480
AMPS	2
KLR PART NO.	KLR2BTB
KLR BOARD NO.	24680
APPROX. WT.-LBS	6
BLOCK WIRE RANGE FOR REACTOR AND TIGHTENING TORQUE.	#12-#18 AWG 10 LB-IN

CUSTOMER IS RESPONSIBLE FOR INSTALLATION TO MEET ALL NATIONAL AND LOCAL ELECTRICAL CODES

NOTE: CABINET MATERIAL: #16 GA STEEL. FINISH: COLOR, BEIGE.

				TOLERANCES (EXCEPT AS NOTED)		<b>TCI</b> 7878 N. 86th STREET MILWAUKEE, WI 53224	
				DECIMAL			
				.XX ±.03		TCI, KLCUL OPEN OUTPUT FILTER, 480V, KLCUL2A	
				.XXX±.01			
				FRACTIONAL ± 1/32		DRN. BY DSW DATE 03-31-00 DRG. NO. 101200DG	
2455 UPDATE SCHEM 10/04/08 DSW				ANGULAR ± 1/2°		SCALE 3/8"=1" APPRD. B	
NO REVISION				DATE BY		SHT. 1 OF 1	

Trans-Coil, Inc.  
Milwaukee, WI  
www.transcoil.com  
800-824-8282

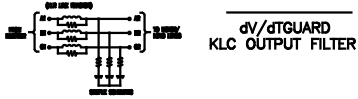
PERFORMANCE AND PROTECTION FOR DRIVES.

KLCUL Output Filter  
KLCUL2A  
3PH, 60HZ, 600V Max, 2A Max  
Dwg #: 101200DG Schematic #: 25389  
Enclosure type: OPEN

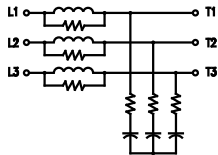


DATE CODE

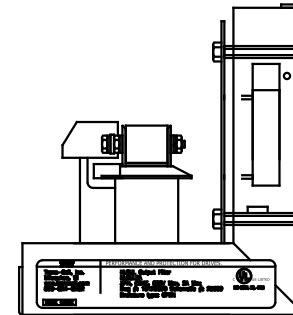
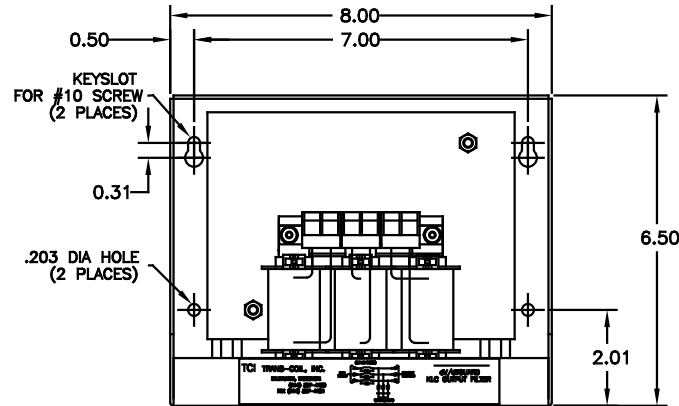
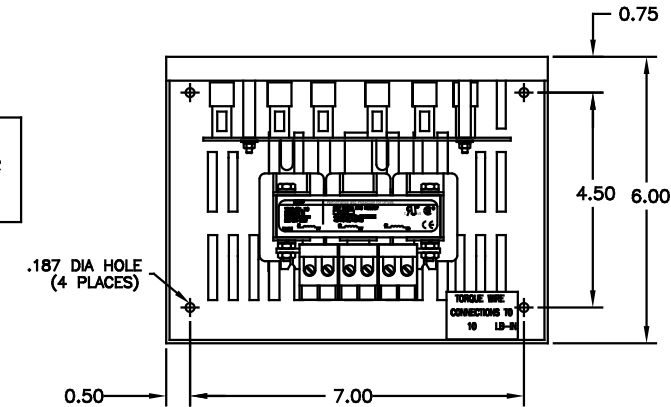
TCI TRANS-COIL, INC.  
MILWAUKEE, WISCONSIN  
(414) 387-4480  
FAX (414) 387-4484



WIRING DIAGRAM



SEE: KLC/KLCUL INSTALLATION GUIDE.  
TCI# 25389



CATALOG NO.	KLCUL2A
VOLTS	480
AMPS	2
KLR PART NO.	KLR2BTB
KLR BOARD NO.	24680
APPROX. WT.-LBS	6
BLOCK WIRE RANGE FOR REACTOR AND TIGHTENING TORQUE.	#12-#18 AWG 10 LB-IN

CUSTOMER IS RESPONSIBLE FOR INSTALLATION  
TO MEET ALL NATIONAL AND LOCAL ELECTRICAL  
CODES

NOTE: CABINET  
MATERIAL: #16 GA STEEL.  
FINISH: COLOR, BEIGE.

				TOLERANCES (EXCEPT AS NOTED)		<b>TCI</b> 7878 N. 86th STREET MILWAUKEE, WI 53224
				DECIMAL		
				.XX ±.03		TCI, KLCUL OPEN OUTPUT FILTER, 480V, KLCUL2A
				.XXX±.01		
				FRACTIONAL		DRN. BY DSW DATE 03-31-00 DWG. NO. B 101200DG
				± 1/32		
2455 UPDATE SCHEM				10/04/06	DSW	SCALE 3/8"=1" APRVD.
NO REVISION				DATE	BY	
				ANGULAR		SHT. 1 OF 1
				± 1/2"		