

PERFORMANCE AND PROTECTION FOR DRIVES

Trans-Coil, Inc.
Milwaukee, WI
www.transcoil.com
608-824-8282

KLCUL Output Filter
KLCUL3R1
3PH, 50HZ, 600V Max, BA Max
Imp In IEC60950 Schematic #: 25389
Enclosure type: 3R

UL LISTED

TCI TRANS-COIL, INC.
MILWAUKEE, WISCONSIN
608 824-8282
FAX 608 827-4284

**dV/dT GUARD
KLC OUTPUT FILTER**

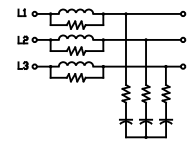
LABEL PLACED ON INSIDE WALL OF CABINET.

TCI

PERFORMANCE AND PROTECTION FOR DRIVES.
TRANS-COIL, INC.
1-800-824-8282

LABEL PLACED ON FRONT OF CABINET.

WIRING DIAGRAM

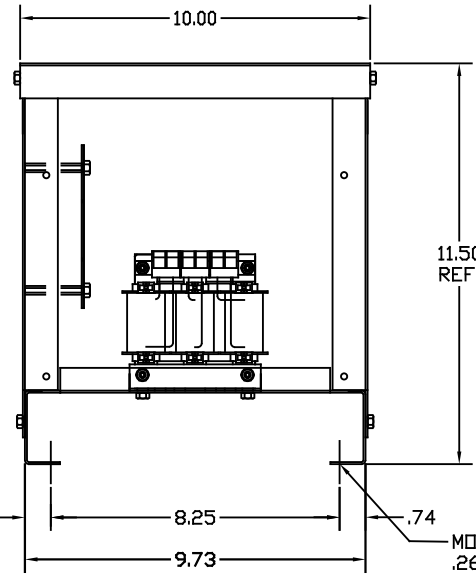


SEE: KLC/KLCUL INSTALLATION GUIDE.
TCI# 25389

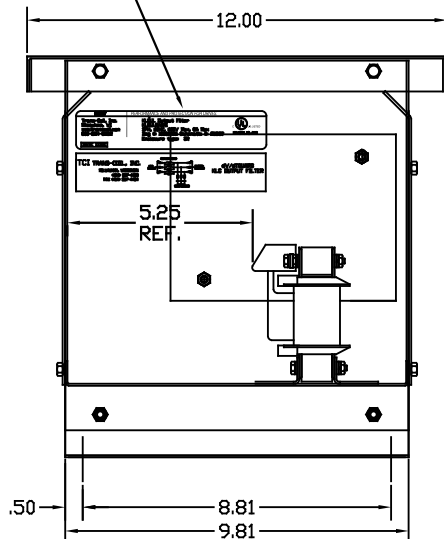
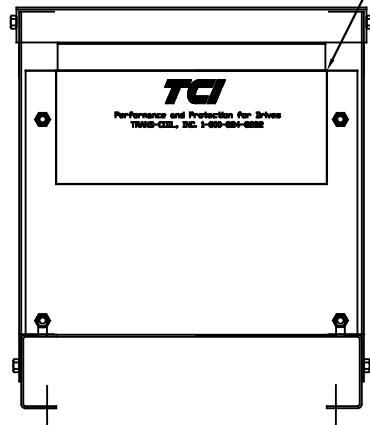
NOTE: INSTALLATION GUIDE MUST
BE SHIPPED WITH EACH UNIT.

BLOCK WIRE RANGE #12-#18 AWG
FOR REACTOR AND
TIGHTENING TORQUE. 10 LB-IN

CATALOG NO.	KLCUL8A3R1
VOLTS	480
AMPS	8
KLR PART NO.	KLR8BTB
KLR BOARD NO.	24680
APPROX. WT.-LBS	20
BLOCK WIRE RANGE FOR REACTOR AND TIGHTENING TORQUE.	#12-#18 AWG 10 LB-IN



11.50
REF.



CUSTOMER IS RESPONSIBLE FOR INSTALLATION
TO MEET ALL NATIONAL AND LOCAL ELECTRICAL CODES.

NOTE: CABINET FINISH: COLOR, BEIGE.

PAINT SUITABLE FOR OUTDOOR APPLICATION PER UL TYPE 3R
AND APPLIED PER A UL ACCEPTED DTVV2 COATING PROGRAM.

TOLERANCES (EXCEPT AS NOTED)			
DECIMAL			
.XX ±.03			
.XXX ±.01			
FRACTIONAL			
± 1/32			
ANGULAR			
± 1/2°			
NO	REVISION	DATE	BY

TCI 7878 N. 86th STREET
MILWAUKEE, WI 53224

**KLCUL3R ENCLOSED OUTPUT
FILTER, 480V, KLCUL8A3R1**

DRN BY	DATE	DWG. NO.
DSW	09/11/06	B 103019DG
SCALE	APPRVD.	
TO FIT		SHT. 1 of 1