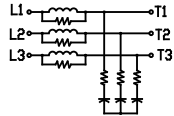
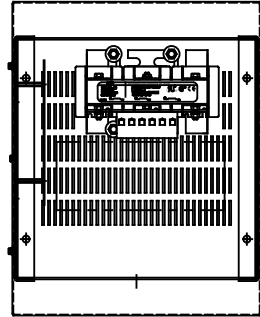


WIRING DIAGRAM



NOTE: INSTALLATION GUIDE MUST BE SHIPPED WITH EACH UNIT.

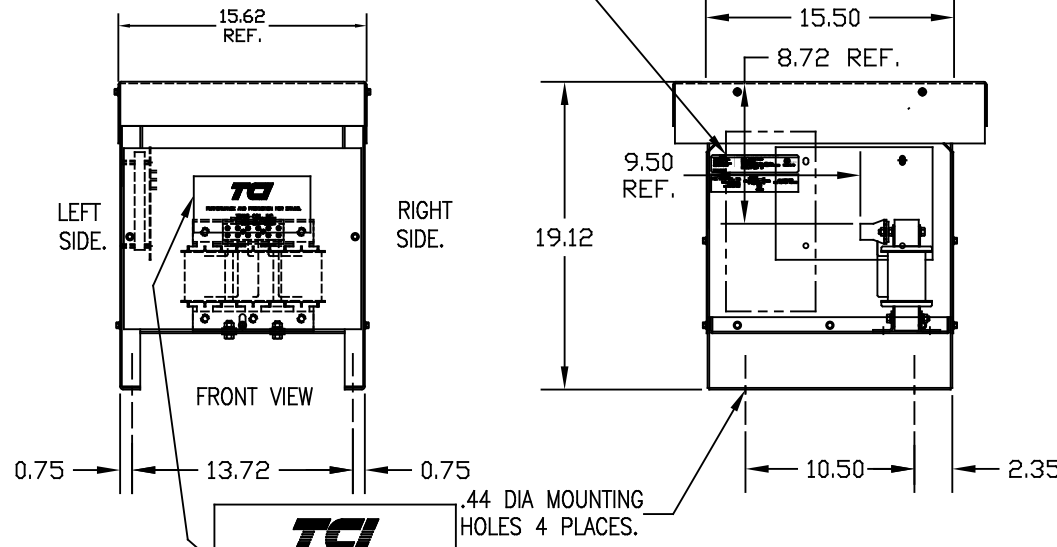


<p>Trans-Coil, Inc. Milwaukee, WI www.transcoil.com 800-824-8282</p>	<p>PERFORMANCE AND PROTECTION FOR DRIVES.</p> <p>KLCUL Output Filter KLCUL80A3R2 3PH, 60HZ, 600V Max, 80A Max Dwg # 102999DG Schematic # 25389 Enclosure type: SR</p>	
	<p>DATE CODE</p>	

<p>TCI TRANS-COIL, INC. MILWAUKEE, WISCONSIN 414-357-4480 FAX 414-357-4484</p>		<p>dV/dt GUARD KLC OUTPUT FILTER</p>
--	--	--

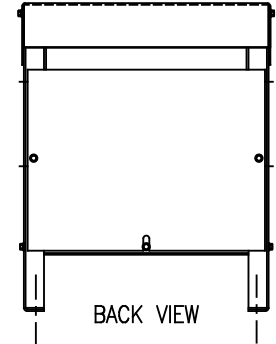
LABELS PLACED ON INSIDE WALL OF CABINET.

CATALOG NO.	KLCUL80A3R2
VOLTS	480
AMPS	80
KLR PART NO.	KLR80BTB
KLR BOARD NO.	24492
APPROX. WT.-LBS	60
BLOCK WIRE RANGE FOR REACTOR AND TIGHTENING TORQUE.	1-4 AWG 35 LB-IN 6-14 AWG 30 LB-IN 16-20 AWG 25 LB-IN 22 AWG 20 LB-IN AL OR CU.



PERFORMANCE AND PROTECTION FOR DRIVES.
TRANS-COIL, INC.
1-800-824-8282

LABEL PLACED ON FRONT OF CABINET.



NOTE: CABINET FINISH: COLOR, BEIGE.

CUSTOMER IS RESPONSIBLE FOR INSTALLATION TO MEET ALL NATIONAL AND LOCAL ELECTRICAL CODES

NO	REVISION	DATE	BY	TOLERANCES (EXCEPT AS NOTED)
				DECIMAL
				.XX ± .03
				.XXX ± .01
				FRACTIONAL
				± 1/32
				ANGULAR
				± 1/2°

7878 N. 86th STREET
MILWAUKEE, WI 53224

KLCUL ENCLOSED OUTPUT FILTER, 480V, KLCUL80A3R2

DRN BY	DATE	DWG NO.
DSW	08/23/06	102999DG
SCALE	APPRV.	
1/8"=1"		B

SHT. 1 of 1