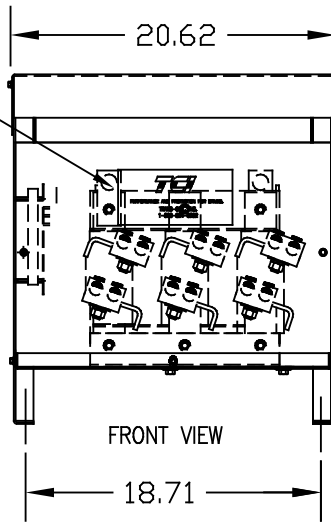
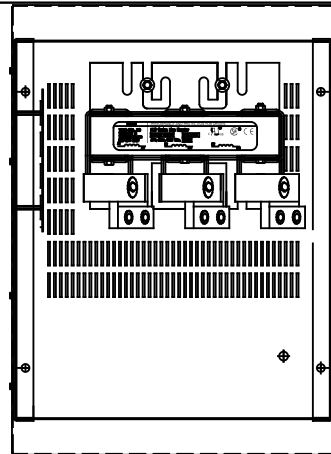


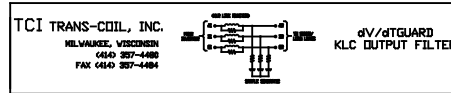
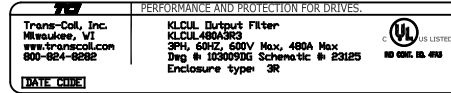
USE COPPER WIRE ONLY
 60°C MINIMUM 80AMP KLC AND BELOW.
 75°C MINIMUM 110AMP KLC AND ABOVE.

TCI DWG# 23125

NOTE: STUFFER SHEET MUST
 BE SHIPPED WITH EACH UNIT.

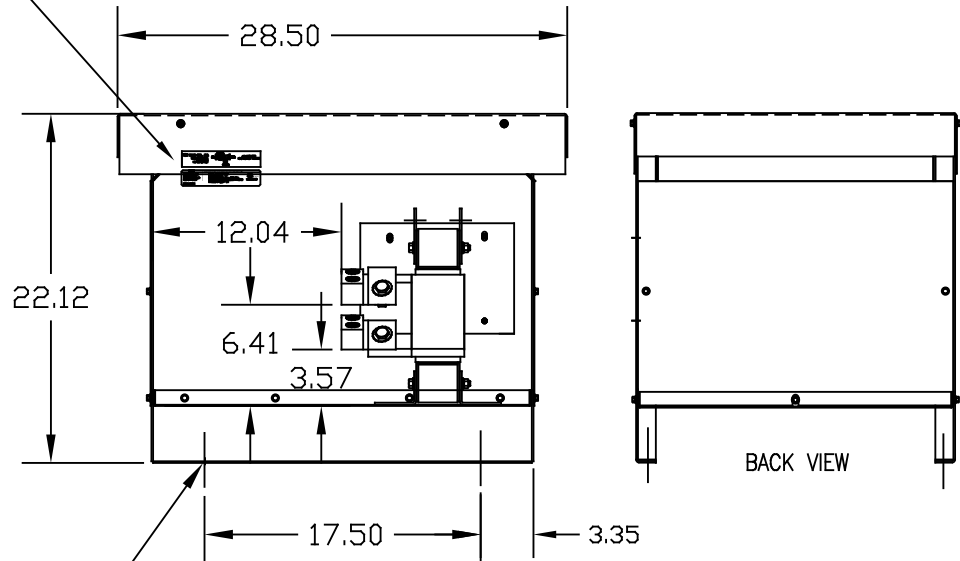


FRONT VIEW



LABELS PLACED ON INSIDE WALL OF CABINET.

LABEL DATA	CATALOG NO.	KLCUL480A3R3
	VOLTS	480
LABEL DATA	AMPS	480
	KLR PART NO.	KLR480BCB
	KLR BOARD NO.	24492
	APPROX. WT.-LBS	156
	REACTOR LUG WIRE RANGE	TWO 600MCM-2, AL. OR CU.
	TIGHTING TORQUE.	500 LB-IN



.50 DIA MOUNTING HOLES (4 PLACES).

CUSTOMER IS RESPONSIBLE FOR INSTALLATION
 TO MEET ALL NATIONAL AND LOCAL ELECTRICAL
 CODES

				TOLERANCES (EXCEPT AS NOTED)	TCI 7878 N. 86th STREET MILWAUKEE, WI 53224
				DECIMAL .XX ± .03 .XXX ± .01	
△	2447, PART# CHG			FRACTIONAL ± 1/32	KLCUL 3R ENCLOSED OUTPUT FILTER, 480V, KLCUL480A3R3
	WAS KLCUL480A33	08/23/06	DSW	ANGULAR ± 1/2°	
NO	REVISION	DATE	BY		DRN BY DSW DATE 08/04/06 DWG NO 103009DG
					SCALE 1/8"=1" APRVD. B SHT. 1 OF 1