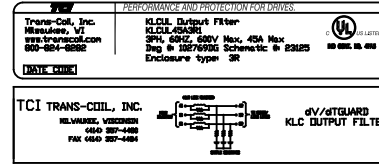
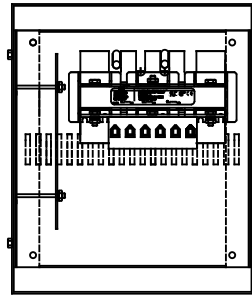


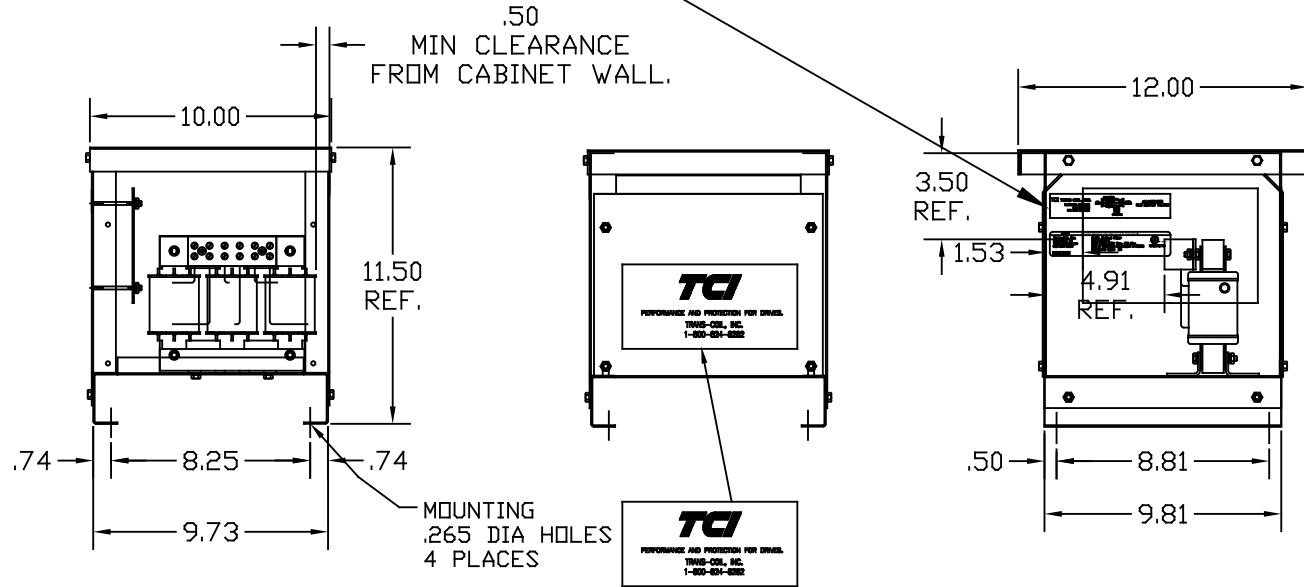
TCI DWG# 28125

NOTE: STUFFER SHEET MUST BE SHIPPED WITH EACH UNIT.



LABELS PLACED ON INSIDE WALL OF CABINET.

LABEL DATA	CATALOG NO.	KLCUL45A3R1
	VOLTS	480
LABEL DATA	AMPS	45
	KLR PART NO.	KLR45BTB
	KLR BOARD NO.	24491
	APPROX. WT.-LBS	26
	BLOCK WIRE RANGE FOR REACTOR AND TIGHTENING TORQUE.	#18-#4 AWG 20 LB-IN



LABEL PLACED ON FRONT OF CABINET.

NOTE: CABINET

FINISH: COLOR, BEIGE.

CUSTOMER IS RESPONSIBLE FOR INSTALLATION TO MEET ALL NATIONAL AND LOCAL ELECTRICAL CODES

				TOLERANCES (EXCEPT AS NOTED)	7878 N. 86th STREET MILWAUKEE, WI 53224 KLCUL3R FILTER KLCUL45A3R1 45A, 480V
				DECIMAL	
				.XX ± .03 .XXX ± .01	
2447, PART# CHG, WAS				FRACTIONAL	DRN BY DSW DATE 08/18/05 DWG. NO. 102769DG
KLCUL45A31	08/23/06	DSW		± 1/32	SCALE 3/16"=1"
2413, REMOVE GRD.	2/17/06	DSW		ANGULAR	APPRV. B
NO REVISION	DATE	BY		± 1/2°	SHT. 1 of 1