

PERFORMANCE AND PROTECTION FOR DRIVES.

Trans-Coll, Inc.  
Milwaukee, WI  
www.transcoll.com  
800-824-8282

KLCUL Output Filter  
KLCUL420A3R3  
3PH, 60HZ, 600V Max, 420A Max  
Dwg #: 104171DG Schematic #: 25389  
Enclosure type: 3R

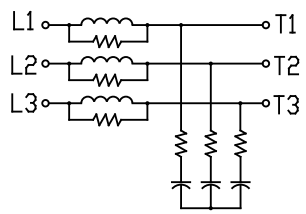
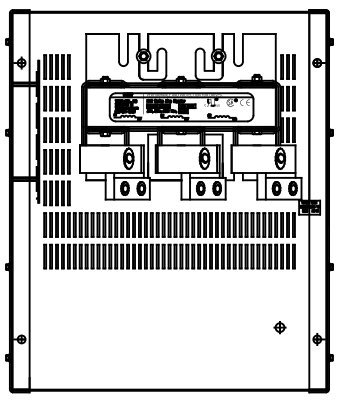
UL LISTED  
NO. 606, 68, 493

TCI TRANS-COIL, INC.  
MILWAUKEE, WISCONSIN  
414-327-4480  
FAX 414-327-4484

dV/dt GUARD  
KLC OUTPUT FILTER

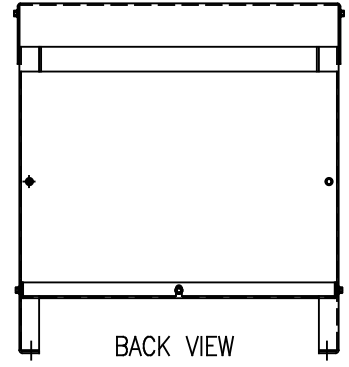
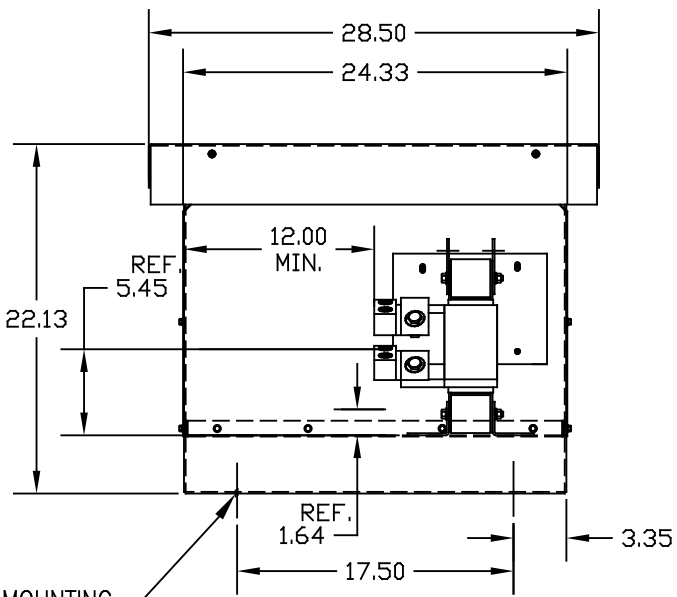
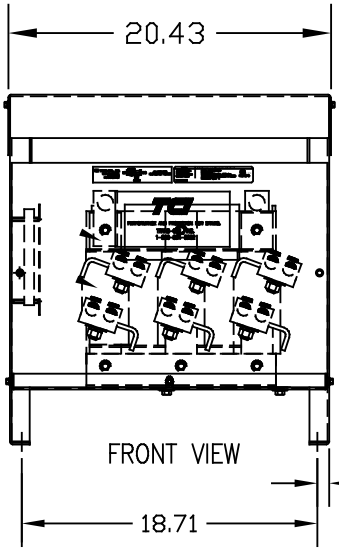
CATALOG NO.	KLCUL420A3R3
VOLTS	480
AMPS	420
KLR PART NO.	KLR420BCB
KLR BOARD NO.	24492
APPROX. WT.-LBS	155
REACTOR LUG WIRE RANGE	TWO 600MCM-2, AL. OR CU.
TIGHTING TORQUE.	500 LB-IN

TORQUE WIRE CONNECTIONS TO 500 LB-IN REACTOR LUGS



WIRING DIAGRAM

NOTE: INSTALLATION GUIDE MUST BE SHIPPED WITH EACH UNIT.



CUSTOMER IS RESPONSIBLE FOR INSTALLATION TO MEET ALL NATIONAL AND LOCAL ELECTRICAL CODES

.50 DIA MOUNTING HOLES (4 PLACES).

TOLERANCES (EXCEPT AS NOTED)			
DECIMAL			
.XX ± .03			
.XXX ± .01			
FRACTIONAL			
± 1/32			
ANGULAR			
± 1/2°			
NO	REVISION	DATE	BY

**TCI** 7878 N. 86th STREET  
MILWAUKEE, WI 53224

KLCUL 3R ENCLOSED OUTPUT FILTER, 480V, KLCUL420A3R3

DRN. BY DSW DATE 1/20/2010 DWG. NO. 104171  
SCALE 1/8"=1" APRVD. B SHT. 1 OF 1