

PERFORMANCE AND PROTECTION FOR DRIVES
 Trans-Coil, Inc.
 Milwaukee, WI
 www.transcoil.com
 800-824-8282
DATE CODE

KLC Output Filter
 KLCUL3A3R1
 3PH, 50HZ, 480V Max, 3A Max
 Dwg # 103237DG Schematic # 25389
 Enclosure type: 3R

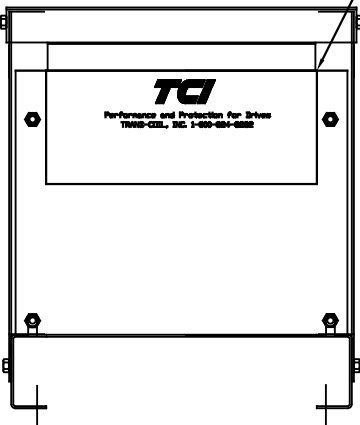
TCI TRANS-COIL, INC.
 MILWAUKEE, WISCONSIN
 4420 827-4280
 FAX 4420 827-4284

dV/dt GUARD
 KLC OUTPUT FILTER

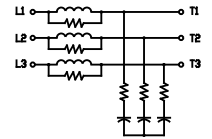
Labels placed on inside of cabinet, opposite side of board.

TCI
 PERFORMANCE AND PROTECTION FOR DRIVES.
 TRANS-COIL, INC.
 1-800-824-8282

LABEL PLACED ON FRONT OF CABINET.



WIRING DIAGRAM

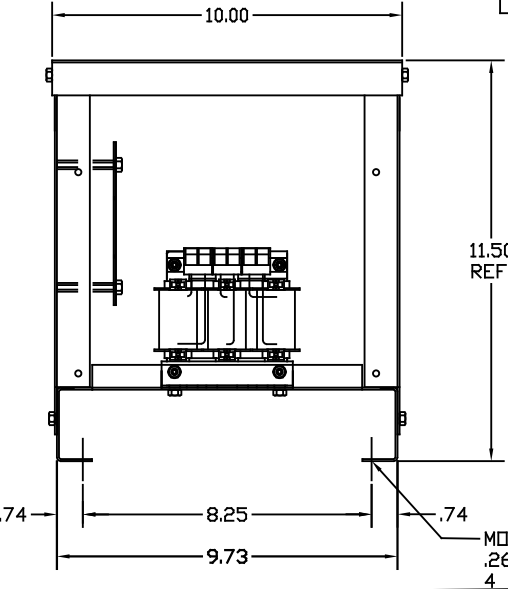


SEE: KLC/KLCUL INSTALLATION GUIDE.
 TCI# 25389

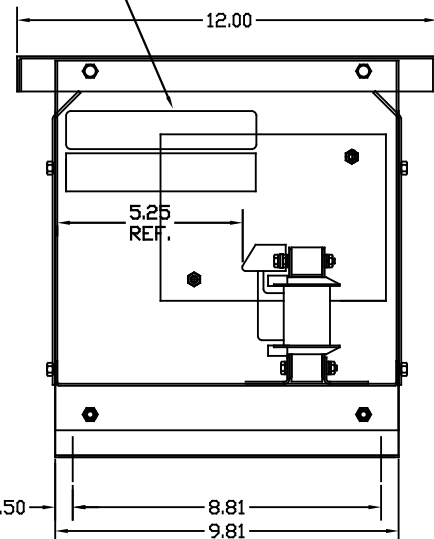
NOTE: INSTALLATION GUIDE MUST BE SHIPPED WITH EACH UNIT.

BLOCK WIRE RANGE #12-#18 AWG
 FOR REACTOR AND
 TIGHTENING TORQUE. 10 LB-IN

CATALOG NO.	KLCUL3A3R1
VOLTS	480
AMPS	3
KLR PART NO.	KLR3BTB
KLR BOARD NO.	24680
APPROX. WT.-LBS	20
BLOCK WIRE RANGE FOR REACTOR AND TIGHTENING TORQUE.	#12-#18 AWG 10 LB-IN



MOUNTING
 .265 DIA HOLES
 4 PLACES



TORQUE WIRE
 CONNECTIONS TO
 10 LB-IN
 REACTOR LUGS

CUSTOMER IS RESPONSIBLE FOR INSTALLATION
 TO MEET ALL NATIONAL AND LOCAL ELECTRICAL CODES.

NOTE: CABINET FINISH: COLOR, BEIGE.

PAINT SUITABLE FOR OUTDOOR APPLICATION PER UL TYPE 3R
 AND APPLIED PER A UL ACCEPTED DTVV2 COATING PROGRAM.

				TOLERANCES (EXCEPT AS NOTED)		TCI 7878 N. 86th STREET MILWAUKEE, WI 53224		
				DECIMAL				
				.XX ± .03		KLCUL3R ENCLOSED OUTPUT FILTER, 480V, KLCUL3A3R1		
				.XXX ± .01				
				FRACTIONAL ± 1/32				
				ANGULAR ± 1/2°		DRN BY DSW	DATE 5/23/07	DWG. NO. B 103237DG
NO	REVISION	DATE	BY	SCALE TO FIT		APPRV.	SHT. 1 of 1	