

PERFORMANCE AND PROTECTION FOR DRIVES.
 Trans-Coll, Inc.
 Milwaukee, WI
 www.transcoll.com
 800-824-8282

KLCUL Output Filter
 KLCUL360A3R3
 3PH, 60HZ, 600V Max, 360A Max
 Dwg # 103057DG Schematic # 25369
 Enclosure type: 3R

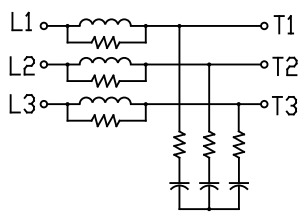
UL LISTED
 NO. ENC. IS. 493

DATE CODE

TCI TRANS-COIL, INC.
 MILWAUKEE, WISCONSIN
 (414) 357-4480
 FAX (414) 357-4484

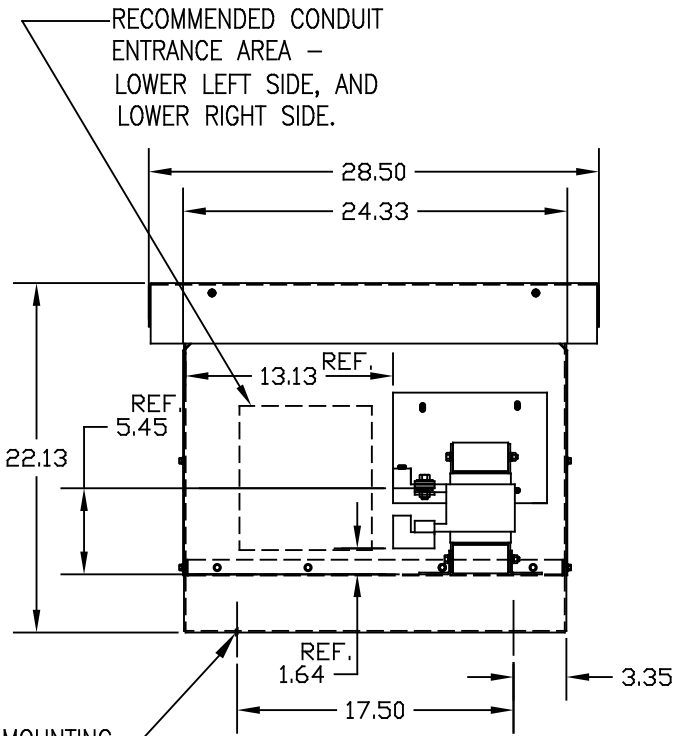
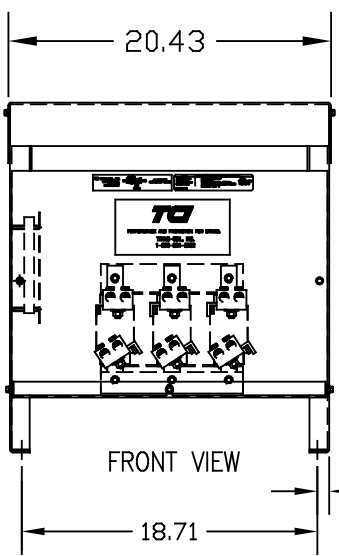
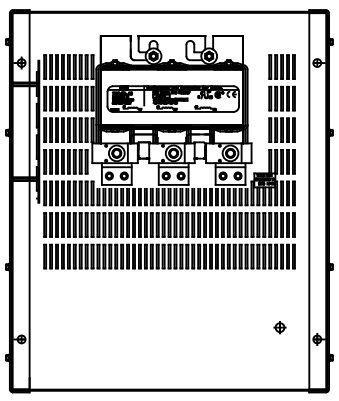
dV/dtGUARD
 KLC OUTPUT FILTER

CATALOG NO.	KLCUL360A3R3
VOLTS	480
AMPS	360
KLR PART NO.	KLR360BCB
KLR BOARD NO.	24492
APPROX. WT.-LBS	134
REACTOR LUG WIRE RANGE	TWO 350MCM-4, AL. OR CU.
TIGHTING TORQUE.	275 LB-IN

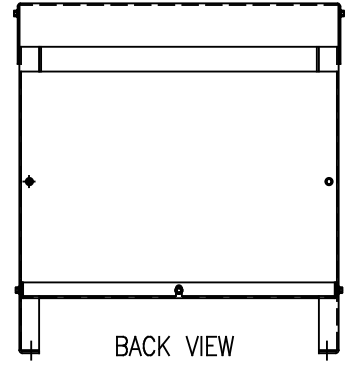


WIRING DIAGRAM

NOTE: INSTALLATION GUIDE MUST BE SHIPPED WITH EACH UNIT.



RECOMMENDED CONDUIT ENTRANCE AREA - LOWER LEFT SIDE, AND LOWER RIGHT SIDE.



CUSTOMER IS RESPONSIBLE FOR INSTALLATION TO MEET ALL NATIONAL AND LOCAL ELECTRICAL CODES

.50 DIA MOUNTING HOLES (4 PLACES).

TOLERANCES (EXCEPT AS NOTED)			
DECIMAL			
.XX ± .03			
.XXX ± .01			
FRACTIONAL			
± 1/32			
ANGULAR			
± 1/2°			
NO	REVISION	DATE	BY

TCI 7878 N. 86th STREET
 MILWAUKEE, WI 53224

KLCUL ENCLOSED OUTPUT FILTER, 480V, KLCUL360A3R3

DRN BY **RJC** DATE 1/11/07 DWG. NO. 103057DG
 SCALE 1/8"=1" APRVD. **B** SHT. 1 OF 1