

**PERFORMANCE AND PROTECTION FOR DRIVES**

Trans-Coil, Inc.  
Milwaukee, WI  
www.transcoil.com  
608-824-8282

**KLCUL Output Filter**  
KLCUL2A3R1  
3PH, 50HZ, 480V Max, BA Max  
Imp. In. IEC4000G Schematic #: 25389  
Enclosure type: 3R

**UL LISTED**

**TCI TRANS-COIL, INC.**  
MILWAUKEE, WISCONSIN  
608 824-8282  
FAX 608 827-4284

**dV/dT GUARD  
KLC OUTPUT FILTER**

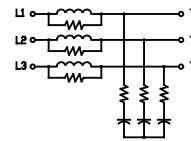
LABEL PLACED ON INSIDE WALL OF CABINET.

**TCI**

PERFORMANCE AND PROTECTION FOR DRIVES.  
TRANS-COIL, INC.  
1-800-824-8282

LABEL PLACED ON FRONT OF CABINET.

**WIRING DIAGRAM**

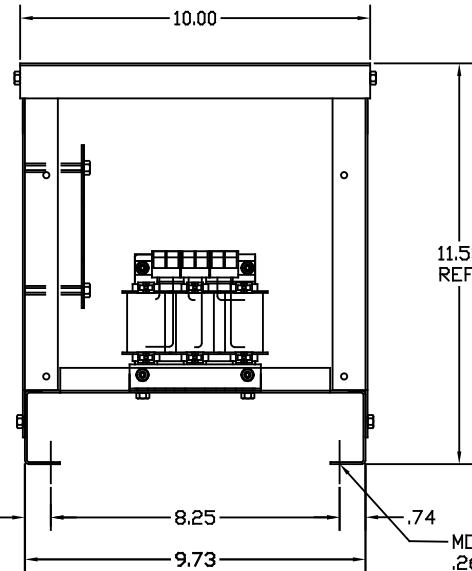


SEE: KLC/KLCUL INSTALLATION GUIDE.  
TCI# 25389

NOTE: INSTALLATION GUIDE MUST  
BE SHIPPED WITH EACH UNIT.

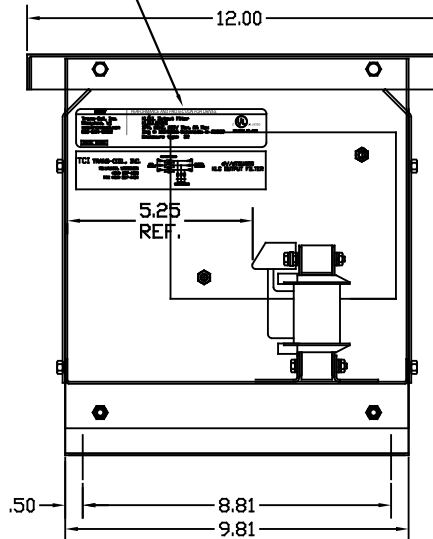
BLOCK WIRE RANGE #12-#18 AWG  
FOR REACTOR AND  
TIGHTENING TORQUE. 10 LB-IN

CATALOG NO.	KLCUL2A3R1
VOLTS	480
AMPS	2
KLR PART NO.	KLR2BTB
KLR BOARD NO.	24680
APPROX. WT.-LBS	20
BLOCK WIRE RANGE FOR REACTOR AND TIGHTENING TORQUE.	#12-#18 AWG 10 LB-IN



NOTE: CABINET FINISH: COLOR, BEIGE.

PAINT SUITABLE FOR OUTDOOR APPLICATION PER UL TYPE 3R  
AND APPLIED PER A UL ACCEPTED DTVV2 COATING PROGRAM.



CUSTOMER IS RESPONSIBLE FOR INSTALLATION  
TO MEET ALL NATIONAL AND LOCAL ELECTRICAL CODES.

TOLERANCES (EXCEPT AS NOTED)				<b>TCI</b> 7878 N. 86th STREET MILWAUKEE, WI 53224	
DECIMAL .XX ±.03 .XXX ±.01					
FRACTIONAL ± 1/32				KLCUL3R ENCLOSED OUTPUT FILTER, 480V, KLCUL2A3R1	
ANGULAR ± 1/2°				DRN BY DSW	DATE 4/18/08
NO				SCALE TO FIT	DWG. NO. B 103450DG SHT. 1 of 1
REVISION		DATE	BY	APPRV.	