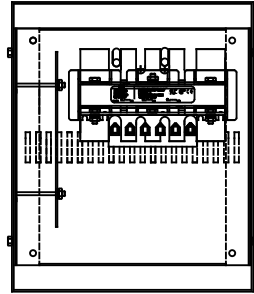


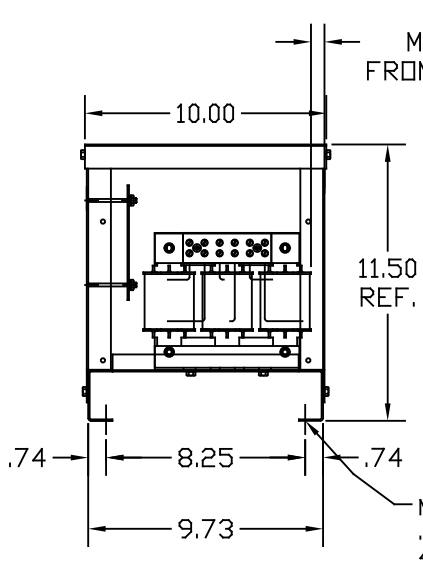
NOTE: STUFFER SHEET MUST BE SHIPPED WITH EACH UNIT.



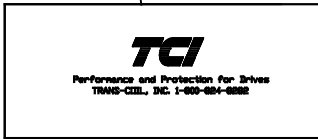
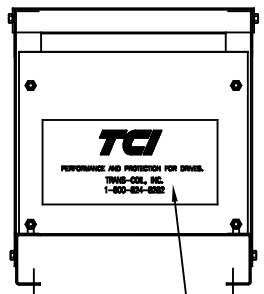
PERFORMANCE AND PROTECTION FOR DRIVES	
Trans-Coil, Inc. Milwaukee, WI www.transcoil.com 800-804-8282	KLCUL Output Filter KLCUL21A3R1 3PH, 60HZ, 480V Max, 21A Max Dwg # 103832DG Schematic # 23089 Enclosure type: 3E
UL LISTED	
TCI TRANS-COIL, INC. MILWAUKEE, WISCONSIN 6040 397-4888 FAX 6040 397-4888	dV/dt GUARD KLC OUTPUT FILTER

LABEL DATA	CATALOG NO.	KLCUL21A3R1
	VOLTS	480
LABEL DATA	AMPS	21
	KLR PART NO.	KLR21BTB
	KLR BOARD NO.	24490
	APPROX. WT.-LBS	25
	BLOCK WIRE RANGE FOR REACTOR AND TIGHTENING TORQUE.	#18-#4 AWG 20 LB-IN

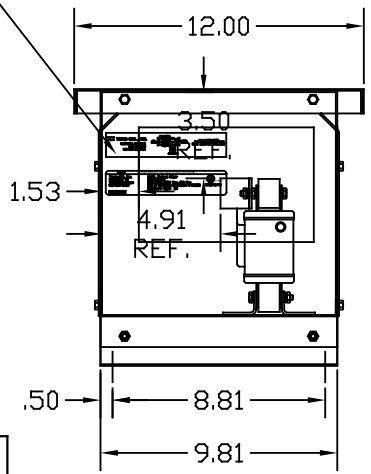
LABELS PLACED ON INSIDE WALL OF CABINET.



.50 MIN CLEARANCE FROM CABINET WALL.



LABEL PLACED ON FRONT OF CABINET.



NOTE: CABINET

FINISH: COLOR, BEIGE.

CUSTOMER IS RESPONSIBLE FOR INSTALLATION TO MEET ALL NATIONAL AND LOCAL ELECTRICAL CODES

NO	REVISION	DATE	BY	TOLERANCES (EXCEPT AS NOTED)
				DECIMAL
				.XX ± .03
				.XXX ± .01
				FRACTIONAL
				± 1/32
				ANGULAR
				± 1/2°

TCI		7878 N. 86th STREET MILWAUKEE, WI 53224	
KLCUL3R ENCLOSED OUTPUT FILTER, 480V, KLCUL21A3R1			
DRN BY	DATE	DWG NO.	
DSW	7/17/08	B	103832DG
SCALE	APPRD.		
3/16"=1"			SHT.1 of 1