

LABEL DATA	CATALOG NO.	KLCUL200A3R3
	VOLTS	480
LABEL DATA	AMPS	200
	KLR PART NO.	KLR200BCB
	KLR BOARD NO.	24492
	APPROX. WT.-LBS	112
	REACTOR LUG WIRE RANGE	250MCM-6, AL OR CU.
	TIGHTENING TORQUE.	275 LB-IN

TCI PERFORMANCE AND PROTECTION FOR DRIVES.

Trans-Coil, Inc.
Milwaukee, WI
www.transcoil.com
800-824-8282

KLCUL Output Filter:
KLCUL200A3R3
3PH, 60HZ, 600V Max, 200A Max
Dwg # 103376DG Schematic # 25389
Enclosure type: SR

UL LISTED
90 CIRC. 15. 499

DATE CODE

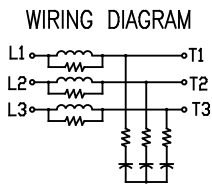
TCI TRANS-COIL, INC.
MILWAUKEE, WISCONSIN
414-257-4480
FAX 414-257-4484

48V/5T GUARD
KLC OUTPUT FILTER

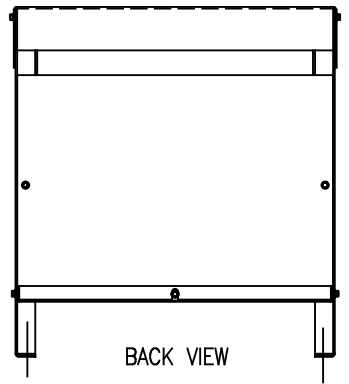
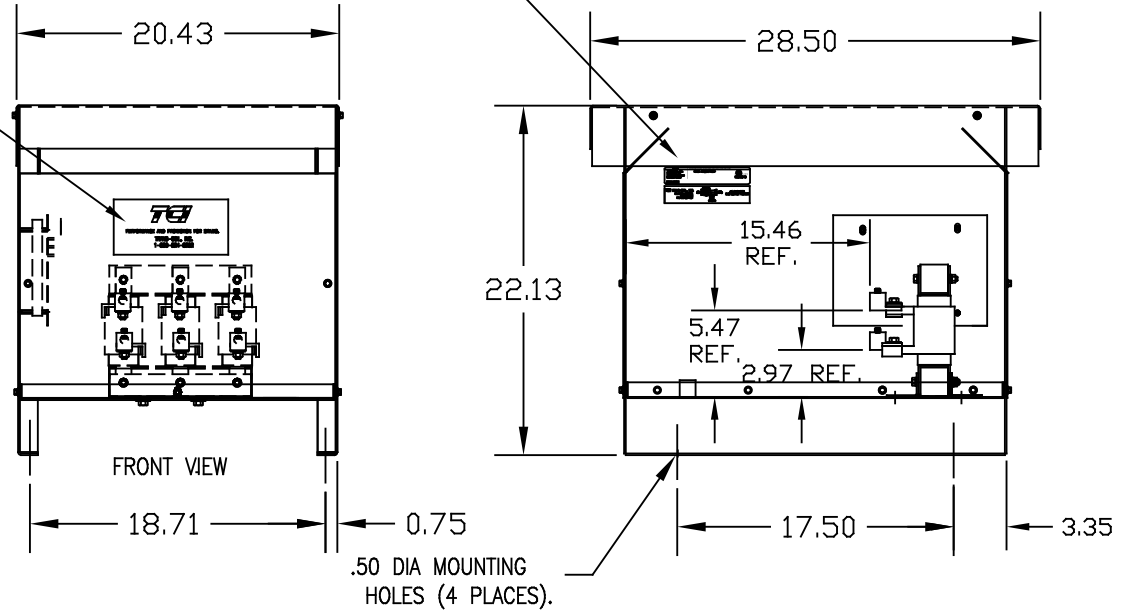
— LABELS PLACED ON INSIDE WALL OF CABINET.

TCI

PERFORMANCE AND PROTECTION FOR DRIVES.
TRANS-COIL, INC.
1-800-824-8282



NOTE: INSTALLATION GUIDE MUST BE SHIPPED WITH EACH UNIT.



NOTE: CABINET FINISH: COLOR, BEIGE.

CUSTOMER IS RESPONSIBLE FOR INSTALLATION TO MEET ALL NATIONAL AND LOCAL ELECTRICAL CODES

				TOLERANCES (EXCEPT AS NOTED)	TCI 7878 N. 86th STREET MILWAUKEE, WI 53224
				DECIMAL	
				.XX ±.03	KLCUL ENCLOSED OUTPUT FILTER, 480V KLCUL200A3R3
				.XXX ±.01	
				FRACTIONAL	DRN. BY DSW
				± 1/32	DATE 1/16/08
				ANGULAR	DWG. NO. 103376DG
				± 1/2°	SCALE 1/8"=1"
NO	REVISION	DATE	BY		APRVD. B