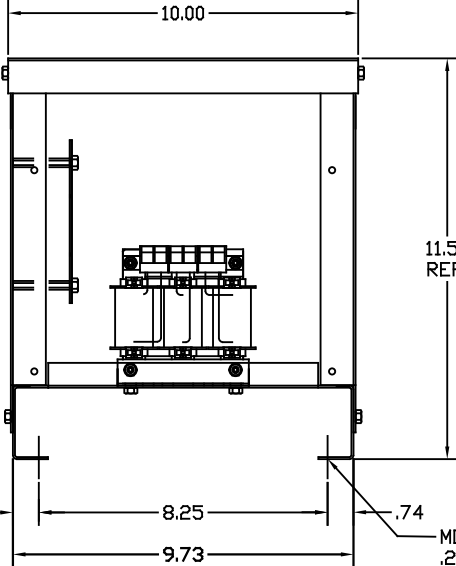


TORQUE LABEL

10.00



11.50  
REF.

MOUNTING  
.265 DIA HOLES  
4 PLACES

**PERFORMANCE AND PROTECTION FOR DRIVES**

Trans-Coil, Inc.  
Milwaukee, WI  
www.transcoil.com  
608-824-8282

**KLCUL Output Filter**  
KLCUL3R3R  
3PH, 50HZ, 480V Max, 12A Max  
Imp @ 100%VDC Schematic # 25389 @ 60 Hz, 480V  
Enclosure type: 3R

**UL LISTED**

**TCI TRANS-COIL, INC.**  
MILWAUKEE, WISCONSIN  
608 824-8282  
FAX 608 824-4284

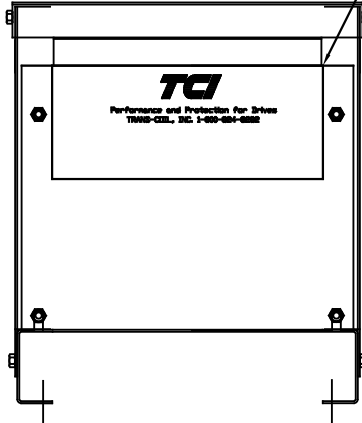
**dV/dT GUARD  
KLC OUTPUT FILTER**

LABEL PLACED ON INSIDE WALL OF CABINET.

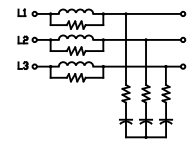
**TCI**

PERFORMANCE AND PROTECTION FOR DRIVES.  
TRANS-COIL, INC.  
1-800-824-8282

LABEL PLACED ON FRONT OF CABINET.



**WIRING DIAGRAM**

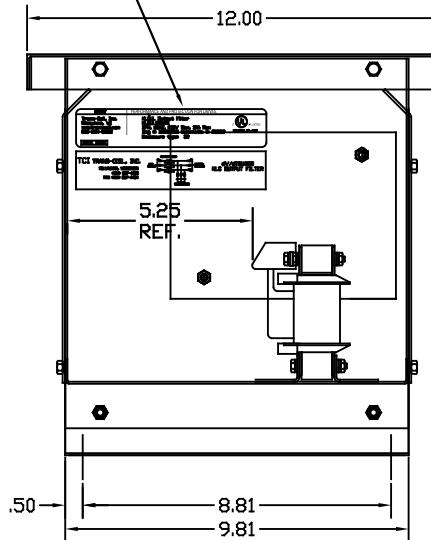


SEE: KLC/KLCUL INSTALLATION GUIDE.

TCI# 25389

NOTE: INSTALLATION GUIDE MUST  
BE SHIPPED WITH EACH UNIT.

BLOCK WIRE RANGE #12-#18 AWG  
FOR REACTOR AND  
TIGHTENING TORQUE. 10 LB-IN



CUSTOMER IS RESPONSIBLE FOR INSTALLATION  
TO MEET ALL NATIONAL AND LOCAL ELECTRICAL CODES.

CATALOG NO.	KLCUL12A3R1
VOLTS	480
AMPS	4
KLR PART NO.	KLR12BTB
KLR BOARD NO.	24489
APPROX. WT.-LBS	20
BLOCK WIRE RANGE FOR REACTOR AND TIGHTENING TORQUE.	#12-#18 AWG 10 LB-IN

NOTE: CABINET FINISH: COLOR, BEIGE.

PAINT SUITABLE FOR OUTDOOR APPLICATION PER UL TYPE 3R  
AND APPLIED PER A UL ACCEPTED DTVV2 COATING PROGRAM.

				TOLERANCES (EXCEPT AS NOTED)		7878 N. 86th STREET MILWAUKEE, WI 53224  <b>KLCUL3R ENCLOSED OUTPUT FILTER, 480V, KLCUL12A3R1</b>	
				DECIMAL			
				.XX ±.03 .XXX ±.01			
				FRACTIONAL ± 1/32			
				ANGULAR ± 1/2°		DRN BY DSW DATE 7/27/07 DWG. NO. B 103268DG	
NO				REVISION		SCALE TO FIT	
				DATE		APPRVD.	
				BY		SHT. 1 of 1	