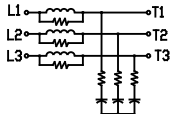
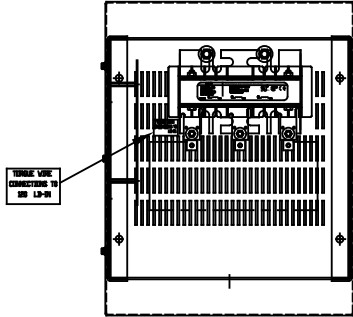


WIRING DIAGRAM



NOTE: INSTALLATION GUIDE MUST BE SHIPPED WITH EACH UNIT.

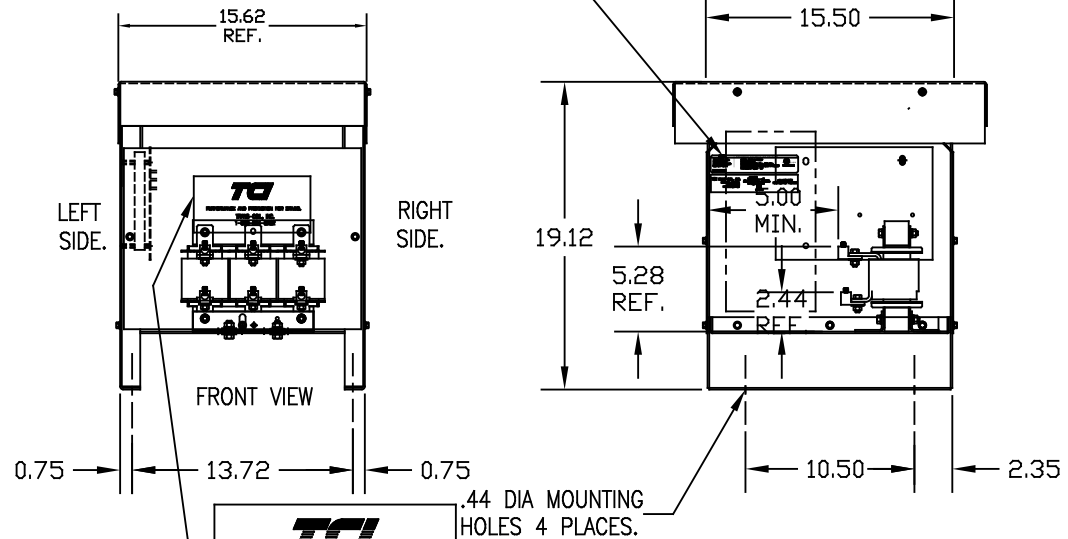


PERFORMANCE AND PROTECTION FOR DRIVES.		UL LISTED
Trans-Coil, Inc. Milwaukee, WI www.transcoil.com 800-824-8282	KLCUL Output Filter KLCUL110A3R2 3PH, 60HZ, 600V Max, 110A Max Dwg # 103024DG Schematic # 25389 Enclosure type: 3R	
DATE CODE		

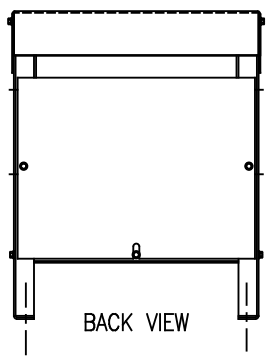
TCI TRANS-COIL, INC. MILWAUKEE, WISCONSIN 414-357-4480 FAX 414-357-4484		dV/dt GUARD KLC OUTPUT FILTER

LABELS PLACED ON INSIDE WALL OF CABINET.

CATALOG NO.	KLCUL110A3R2
VOLTS	480
AMPS	110
KLR PART NO.	KLRUL110BCB
KLR BOARD NO.	24492
APPROX. WT.-LBS	67
LUG WIRE RANGE FOR REACTOR.	2/0-6, AL OR CU.
TIGHTENING TORQUE.	120 LB-IN



LABEL PLACED ON FRONT OF CABINET.



NOTE: CABINET FINISH: COLOR, BEIGE.

CUSTOMER IS RESPONSIBLE FOR INSTALLATION TO MEET ALL NATIONAL AND LOCAL ELECTRICAL CODES

NO	REVISION	DATE	BY		

TOLERANCES (EXCEPT AS NOTED)	
DECIMAL	.XX ± .03 .XXX ± .01
FRACTIONAL	± 1/32
ANGULAR	± 1/2°

TCI 878 N. 86th STREET MILWAUKEE, WI 53224

KLCUL ENCLOSED OUTPUT FILTER, 480V, KLCUL110A3R2

DRN BY	DATE	DWG NO.
DSW	09/19/06	103024DG
SCALE	APPRD.	
1/8"=1'		B