


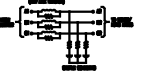
PERFORMANCE AND PROTECTION FOR DRIVES.

Trans-Coil, Inc.
Milwaukee, WI
www.transcoil.com
800-824-8282

KLCUL Output Filter
KLCUL130A2
3PH, 60HZ, 600V Max, 130A Max
Dwg #: 101233DG Schematic #: 25389
Enclosure type: 1

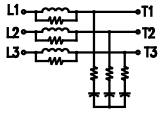


TCI TRANS-COIL, INC.
MILWAUKEE, WISCONSIN
(414) 387-4489
FAX (414) 387-4484



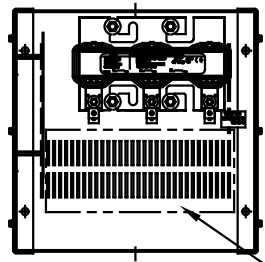
dv/dt GUARD
KLC OUTPUT FILTER

WIRING DIAGRAM

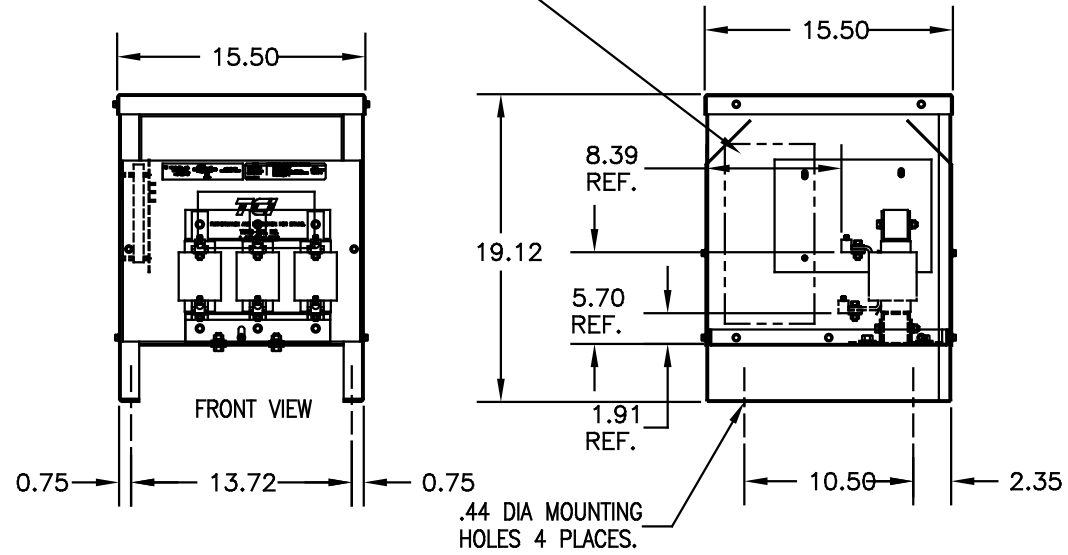


SEE: KLC/KLCUL INSTALLATION GUIDE.
TCI# 25389

NOTE: INSTALLATION GUIDE MUST
BE SHIPPED WITH EACH UNIT.



RECOMMENDED CONDUIT
ENTRANCE AREA -
TOP, LOWER LEFT SIDE, AND
LOWER RIGHT SIDE.



CATALOG NO.	KLCUL130A2
VOLTS	480
AMPS	130
KLR PART NO.	KLR130BCB
KLR BOARD NO.	24492
APPROX. WT.-LBS	70
LUG WIRE RANGE FOR REACTOR.	2/0-6, AL OR CU.
TIGHTENING TORQUE.	120 LB-IN

NOTE: CABINET
FINISH: COLOR, BEIGE.
(BOTTOM FABRICATION)
MATERIAL: #12 GA. (.104) STEEL
(SIDE PANELS LEFT AND RIGHT)
MATERIAL: #14 GA. (.074) STEEL
(TOP COVER AND FRONT AND BACK COVER)
MATERIAL: #16 GA. (.060) STEEL

NO	REVISION	DATE	BY	TOLERANCES (EXCEPT AS NOTED)
E	2455 UPDATE SCHEM.	10/02/06	DSW	DECIMAL
D	2413, REMOVE GRD	2/14/06	DSW	.XX ±.03
C	2326 UPDATE BOARD	08/01/05	DSW	.XXX±.01
B	2233, LABEL UPDATE	05/07/03	DSW	FRACTIONAL ± 1/32
A	# 2066, LABEL UPDATE	11/29/2000	DSW	ANGULAR ± 1/2°

TCI 7878 N. 86th STREET
MILWAUKEE, WI 53224

KLCUL ENCLOSED OUTPUT
FILTER, 480V, KLCUL130A2

DRN. BY	DATE	DRWG. NO.
DSW	04-05-00	B 101233DG
SCALE	APPRD.	
1/8"=1"		SHT. 1 OF 1

CUSTOMER IS RESPONSIBLE FOR INSTALLATION
TO MEET ALL NATIONAL AND LOCAL ELECTRICAL
CODES