

**PERFORMANCE AND PROTECTION FOR DRIVES.**

Trans-Coil, Inc.  
Milwaukee, WI  
www.transcoil.com  
800-824-8282

KLCUL Output Filter  
KLCUL110A2  
3PH, 50/60, 600V Max, 110A Max  
Dwg #: 101231DG Schematic #: 25389  
Enclosure type: 1

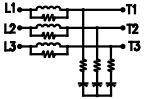
UL LISTED  
NO. 606, 10, 475

[DATE CODE]

TCI TRANS-COIL, INC.  
MILWAUKEE, WISCONSIN  
(414) 357-4480  
FAX (414) 357-4484

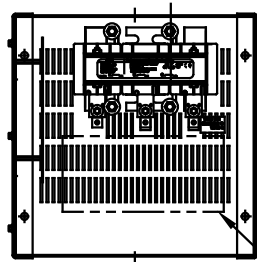
dV/dtGUARD  
KLC OUTPUT FILTER

WIRING DIAGRAM

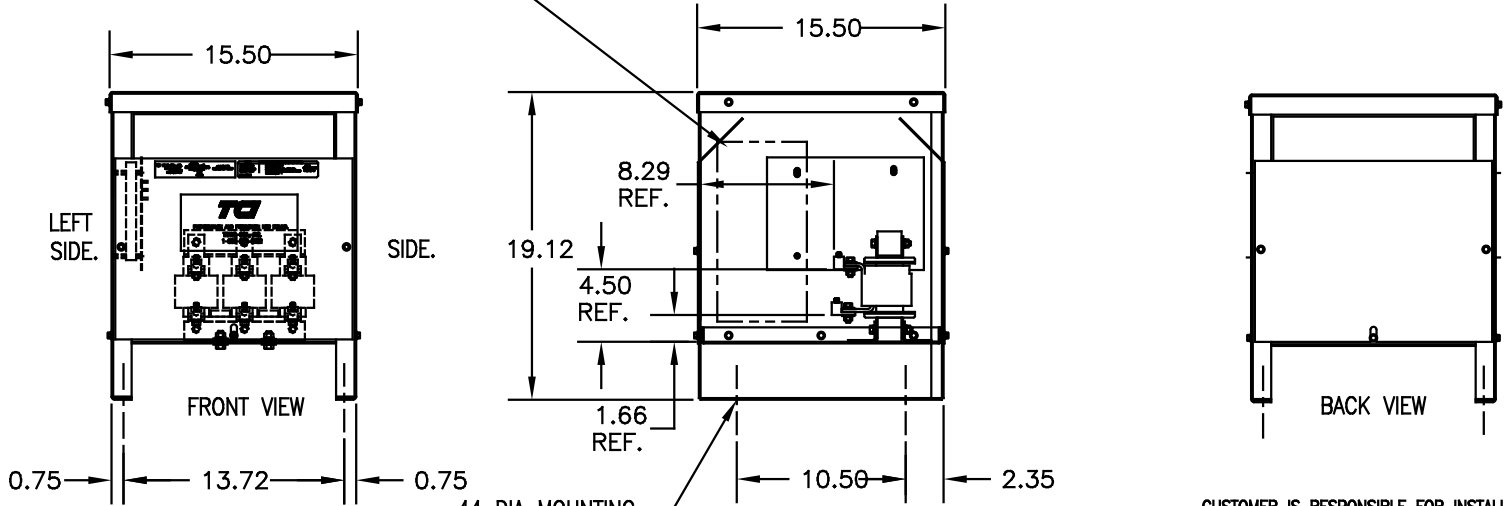


SEE: KLC/KLCUL INSTALLATION GUIDE.  
TCI# 25389

NOTE: INSTALLATION GUIDE MUST  
BE SHIPPED WITH EACH UNIT.



RECOMMENDED CONDUIT  
ENTRANCE AREA -  
TOP, LOWER LEFT SIDE, AND  
LOWER RIGHT SIDE.



CUSTOMER IS RESPONSIBLE FOR INSTALLATION  
TO MEET ALL NATIONAL AND LOCAL ELECTRICAL  
CODES

NOTE: CABINET  
FINISH: COLOR, BEIGE.  
(BOTTOM FABRICATION)  
MATERIAL: #12 GA. (.104) STEEL  
(SIDE PANELS LEFT AND RIGHT)  
MATERIAL: #14 GA. (.074) STEEL  
(TOP COVER AND FRONT AND BACK COVER)  
MATERIAL: #16 GA. (.056) STEEL

| NO | REVISION           | DATE      | BY  | TOLERANCES<br>(EXCEPT AS NOTED) |
|----|--------------------|-----------|-----|---------------------------------|
| E  | 2455 UPDATE SCHEM. | 10/02/06  | DSW | DECIMAL                         |
| D  | 2413, REMOVE GRD.  | 2/14/06   | DSW | .XX ±.03                        |
| C  | 2326 UPDATE BOARD  | 8/01/05   | DSW | .XXX±.01                        |
| B  | 2233, LABEL CHANGE | 05/07/03  | DSW | FRACTIONAL<br>± 1/32            |
| A  | #2066 LABEL CHANGE | 11/28/200 | DSW | ANGULAR<br>± 1/2°               |

**TCI** 7878 N. 86th STREET  
MILWAUKEE, WI 53224

KLCUL ENCLOSED OUTPUT  
FILTER, 480V, KLCUL110A2

|         |          |             |
|---------|----------|-------------|
| DRN. BY | DATE     | DRG. NO.    |
| DSW     | 04-05-00 | B 101231DG  |
| SCALE   | APPRD.   |             |
| 1/8"=1" |          | SHT. 1 OF 1 |

|                                |                  |
|--------------------------------|------------------|
| CATALOG NO.                    | KLCUL110A2       |
| VOLTS                          | 480              |
| AMPS                           | 110              |
| KLR PART NO.                   | KLR110BCB        |
| KLR BOARD NO.                  | 24492            |
| APPROX. WT.-LBS                | 64               |
| LUG WIRE RANGE<br>FOR REACTOR. | 2/0-6, AL OR CU. |
| TIGHTENING TORQUE.             | 120 LB-IN        |