

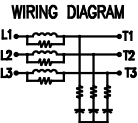
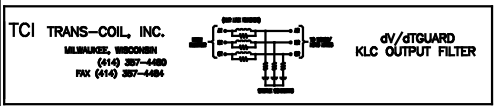
PERFORMANCE AND PROTECTION FOR DRIVES.

Trans-Coil, Inc.
Milwaukee, WI
www.transcoil.com
800-824-8282

KLCUL Output Filter
KLCUL80A2
3PH, 60HZ, 800V Max, 80A Max
Dwg #: 101229DG Schematic #: 25389
Enclosure type: 1

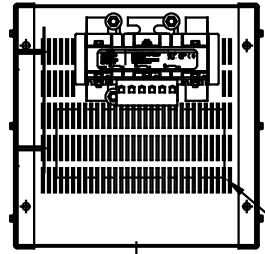
UL LISTED
NEMA 4X
IP 65

DATE CODE:

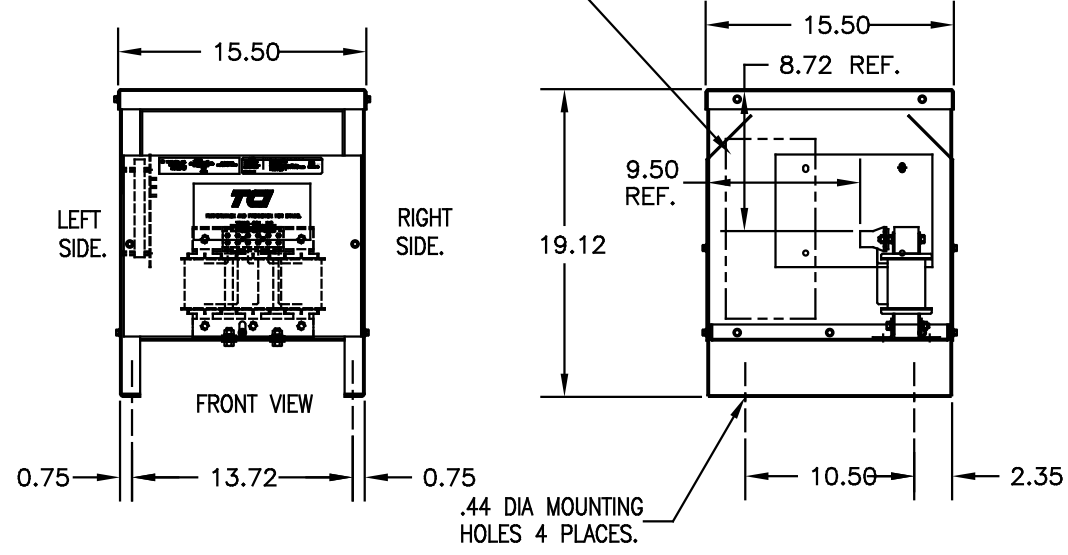


SEE: KLC/KLCUL INSTALLATION GUIDE.
TCI# 25389

NOTE: INSTALLATION GUIDE MUST
BE SHIPPED WITH EACH UNIT.



RECOMMENDED CONDUIT
ENTRANCE AREA -
TOP, LOWER LEFT SIDE, AND
LOWER RIGHT SIDE.



CATALOG NO.	KLCUL80A2
VOLTS	480
AMPS	80
KLR PART NO.	KLR80BTB
KLR BOARD NO.	24492
APPROX. WT.-LBS	60
BLOCK WIRE RANGE FOR REACTOR AND TIGHTENING TORQUE.	1-4 AWG 35 LB-IN 6-14 AWG 30 LB-IN 16-20 AWG 25 LB-IN 22 AWG 20 LB-IN AL OR CU.

NOTE: CABINET
FINISH: COLOR, BEIGE.
(BOTTOM FABRICATION)
MATERIAL: #12 GA. (.104) STEEL
(SIDE PANELS LEFT AND RIGHT)
MATERIAL: #14 GA. (.074) STEEL
(TOP COVER AND FRONT AND BACK COVER)
MATERIAL: #18 GA. (.059) STEEL

NO	REVISION	DATE	BY	TOLERANCES (EXCEPT AS NOTED)
E	2455 UPDATE SCHEM	10/02/06	DSW	DECIMAL
D	2413, REMOVE GRD.	2/15/06	DSW	.XX ±.03
C	2326 UPDATE BOARD	07/29/05	DSW	.XXX±.01
B	2233, LABEL CHANGE	05/07/03	DSW	FRACTIONAL ± 1/32
A	# 2066 LABEL CHANGE	11/16/2000	DSW	ANGULAR ± 1/2°

CUSTOMER IS RESPONSIBLE FOR INSTALLATION TO MEET ALL NATIONAL AND LOCAL ELECTRICAL CODES

TCI 7878 N. 86th STREET
MILWAUKEE, WI 53224

KLCUL ENCLOSED OUTPUT FILTER, 480V, KLCUL80A2

DRN. BY DSW DATE 04-05-00 DWG. NO. 101229DG
SCALE 1/8"=1" APPR. B SH. 1 OF 1