

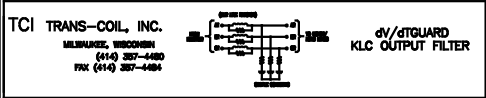
**PERFORMANCE AND PROTECTION FOR DRIVES.**

Trans-Coil, Inc.  
Milwaukee, WI  
www.transcoil.com  
800-824-8282

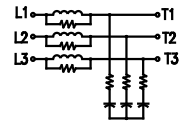
KLCUL Output Filter  
KLCUL55A1  
3PH, 60HZ, 600V Max, 55A Max  
Dwg #: 101227DG Schematic #: 25389  
Enclosure type: 1

UL LISTED  
NEMA 4X

DATE CODE

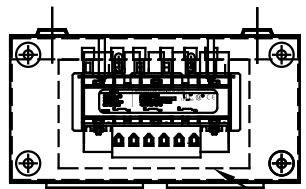


WIRING DIAGRAM

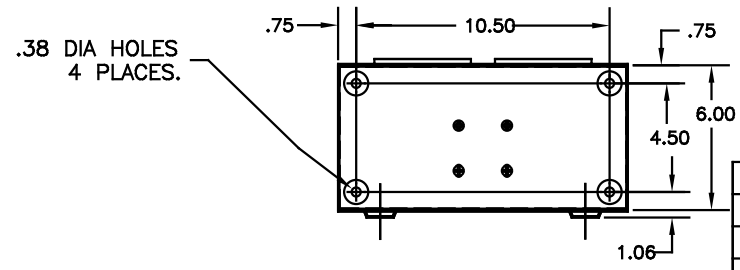
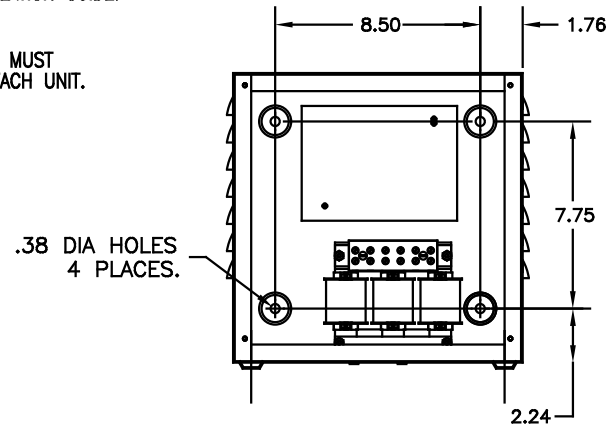


SEE: KLC/KLCUL INSTALLATION GUIDE.  
TCI# 25389

NOTE: INSTALLATION GUIDE MUST  
BE SHIPPED WITH EACH UNIT.

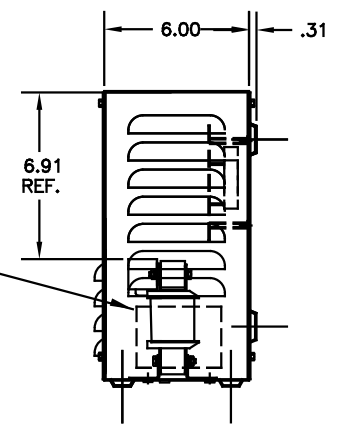
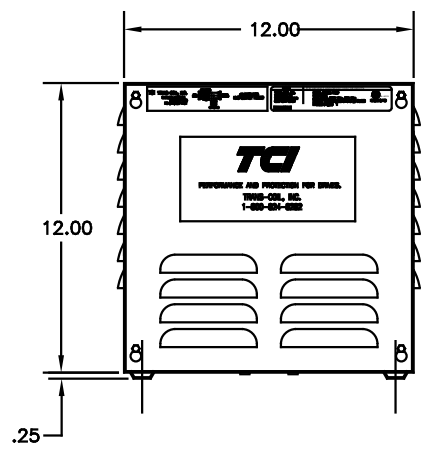


RECOMMENDED CONDUIT  
ENTRANCE AREA -  
TOP, LOWER LEFT SIDE, AND  
LOWER RIGHT SIDE.



NOTE: CABINET  
MATERIAL: #16 GA STEEL.  
FINISH: COLOR, BEIGE.

LABEL DATA	CATALOG NO.	KLCUL55A1
	VOLTS	480
LABEL DATA	AMPS	55
	KLR PART NO.	KLR55BTB
	KLR BOARD NO.	24491
	APPROX. WT.-LBS	23
	BLOCK WIRE RANGE FOR REACTOR AND TIGHTENING TORQUE.	#18-#4 AWG 20 LB-IN



CUSTOMER IS RESPONSIBLE FOR INSTALLATION  
TO MEET ALL NATIONAL AND LOCAL ELECTRICAL  
CODES

				TOLERANCES (EXCEPT AS NOTED)
				DECIMAL
H	2455 UPDATE SCHEM.	10/02/06	DSW	.XX ±.03
G	2413, REMOVE GRD.	2/14/06	DSW	.XXX ±.01
F	2326 UPDATE BOARD	07/29/05	DSW	FRACTIONAL ± 1/32
E	2314, UPDATE LOUVERS	08/24/04	DSW	ANGULAR ± 1/2°
NO	REVISION	DATE	BY	



7878 N. 86th STREET  
MILWAUKEE, WI 53224

KLCUL ENCLOSED OUTPUT  
FILTER, 480V, KLCUL55A1

DRN. BY	DATE	DRWG. NO.
DSW	04-04-00	B 101227DG
SCALE	APPRD.	
3/16"=1"		SHT. 1 OF 1