

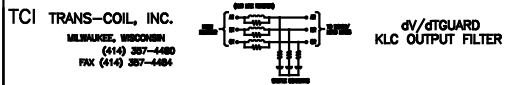
Trans-Coil, Inc.  
Milwaukee, WI  
www.transcoil.com  
800-824-8282

**PERFORMANCE AND PROTECTION FOR DRIVES.**

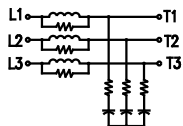
KLCUL Output Filter  
KLCUL35A1  
3PH, 60HZ, 600V Max, 35A Max  
Dwg #: 101223DG Schematic #: 25389  
Enclosure type: 1

UL LISTED  
NO. 001, 18, 478

DATE CODE:

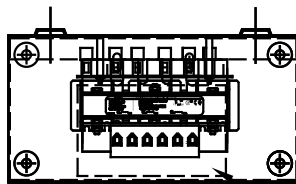


WIRING DIAGRAM

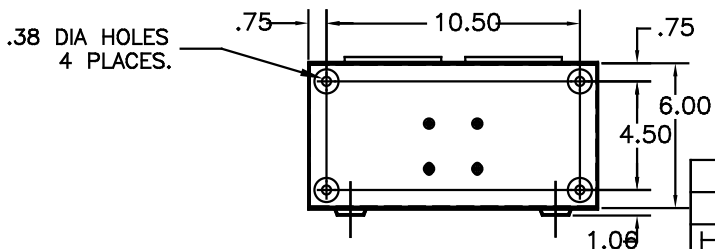
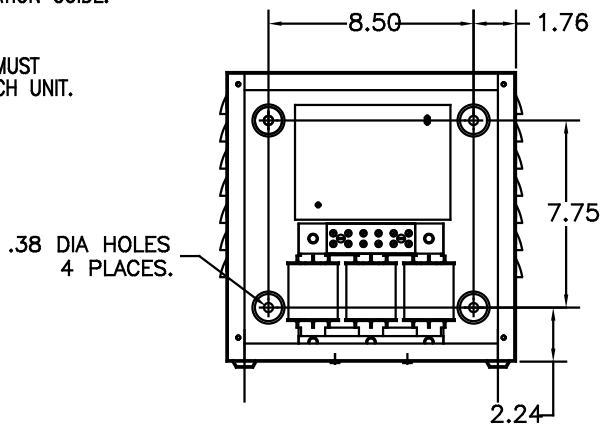


SEE: KLC/KLCUL INSTALLATION GUIDE.  
TCI# 25389

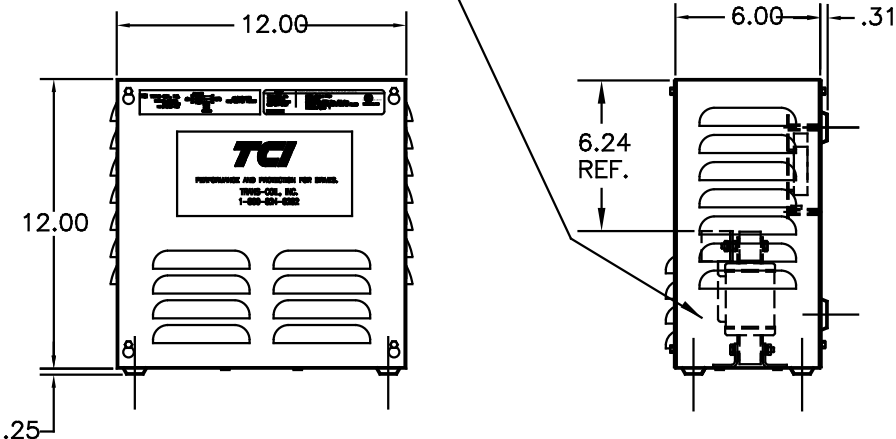
NOTE: INSTALLATION GUIDE MUST  
BE SHIPPED WITH EACH UNIT.



RECOMMENDED CONDUIT  
ENTRANCE AREA -  
TOP, LOWER LEFT SIDE, AND  
LOWER RIGHT SIDE.



NOTE: CABINET  
MATERIAL: #16 GA STEEL.  
FINISH: COLOR, BEIGE.



CATALOG NO.	KLCUL35A1
VOLTS	480
AMPS	35
KLR PART NO.	KLR35BTB
KLR BOARD NO.	24490
APPROX. WT.-LBS	22
BLOCK WIRE RANGE FOR REACTOR AND TIGHTENING TORQUE.	#8-#4 AWG 20 LB-IN

CUSTOMER IS RESPONSIBLE FOR INSTALLATION  
TO MEET ALL NATIONAL AND LOCAL ELECTRICAL  
CODES

				TOLERANCES (EXCEPT AS NOTED)	7878 N. 86th STREET MILWAUKEE, WI 53224	
				DECIMAL		
H	2455 UPDATE SCHEM.	10/02/06	DSW	.XX ±.03	<b>KLCUL ENCLOSED OUTPUT FILTER, 480V, KLCUL35A1</b>	
G	2413, REMOVE GRD.	2/14/06	DSW	.XXX±.01		
F	2326 UPDATE BOARD	07/28/05	DSW	FRACTIONAL ± 1/32		
E	2314, UPDATE LOUVERS	08/24/04	DSW	ANGULAR ± 1/2°		
NO	REVISION	DATE	BY			
				DRN. BY	DATE	DRWG. NO.
				SCALE	APPRD.	
				DSW	04-04-06	B 101223DG
				3/16"=1"		SHT. 1 OF 1