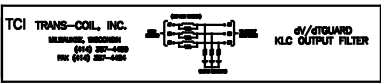


PERFORMANCE AND PROTECTION FOR DRIVES

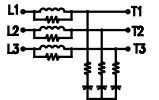
Trans-Coil, Inc.
Milwaukee, WI
www.transcoil.com
800-834-6282

KLCUL Output Filter
KLCUL27A1
25A, 60/125, 600V Max, 27A Max
Dwg # 101221DG Schematic #: 20389
Enclosure Type 1

UL LISTED

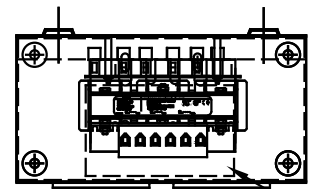


WIRING DIAGRAM



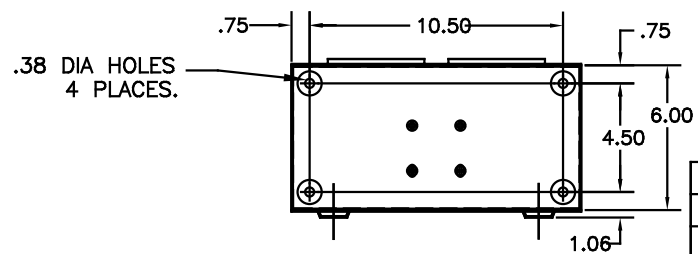
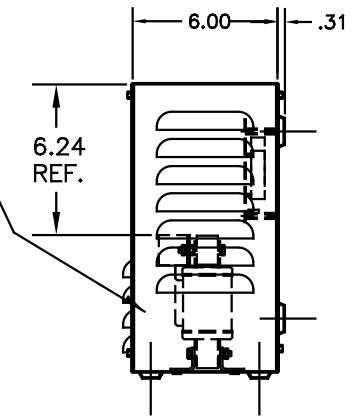
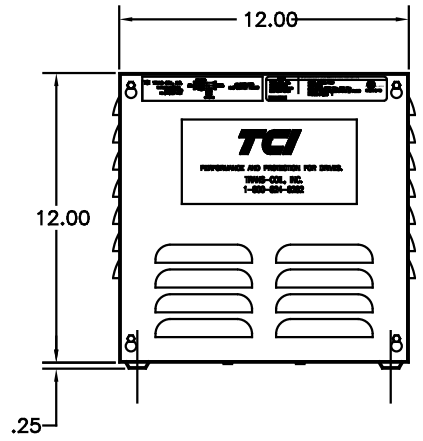
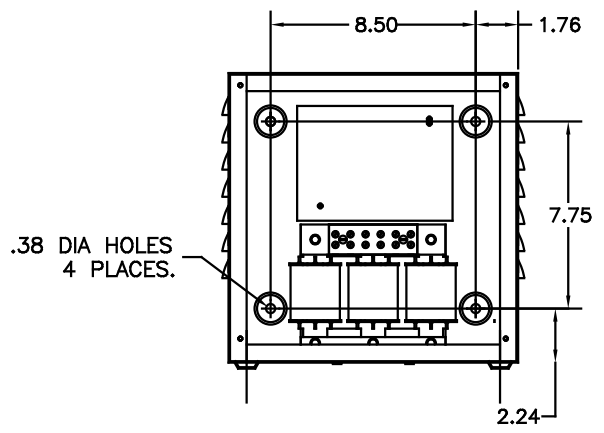
SEE: KLC/KLCUL INSTALLATION GUIDE.
TCI# 25389

NOTE: INSTALLATION GUIDE MUST
BE SHIPPED WITH EACH UNIT.



RECOMMENDED CONDUIT
ENTRANCE AREA -
TOP, LOWER LEFT SIDE, AND
LOWER RIGHT SIDE.

CATALOG NO.	KLCUL27A1
VOLTS	480
AMPS	27
KLR PART NO.	KLR27BTB
KLR BOARD NO.	24490
APPROX. WT.-LBS	21
BLOCK WIRE RANGE FOR REACTOR AND TIGHTENING TORQUE.	#18-#4 AWG 20 LB-IN



CUSTOMER IS RESPONSIBLE FOR INSTALLATION
TO MEET ALL NATIONAL AND LOCAL ELECTRICAL
CODES

NOTE: CABINET
MATERIAL: #16 GA STEEL
FINISH: COLOR, BEIGE.

				TOLERANCES (EXCEPT AS NOTED)
				DECIMAL
H	2455 UPDATE SCHEM.	10/02/06	DSW	.XX ±.03
G	2413, REMOVE GRD.	2/14/06	DSW	.XXX±.01
F	2326 UPDATE BOARD	07/28/05	DSW	FRACTIONAL ± 1/32
E	2314, UPDATE LOUVERS	08/24/04	DSW	ANGULAR ± 1/2°
NO	REVISION	DATE	BY	

TCI 7878 N. 86th STREET
MILWAUKEE, WI 53224

KLCUL ENCLOSED OUTPUT
FILTER, 480V, KLCUL27A1

DRN. BY	DATE	DRG. NO.
DSW	04-04-00	B 101221DG
SCALE	3/16"=1"	APPRD.
		SHT. 1 OF 1