

PERFORMANCE AND PROTECTION FOR DRIVES.

Trans-Coil, Inc.
Milwaukee, WI
www.transcoil.com
800-824-8282

KLCUL Output Filter
KLCUL25A1
3PH, 60HZ, 600V Max, 25A Max
Dwg #: 101219DG Schematic #: 25389
Enclosure type: 1

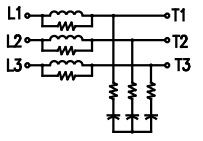
UL LISTED
EQUIV. TO IEC 61800-3

DATE CODE

TCI TRANS-COIL, INC.
MILWAUKEE, WISCONSIN
(414) 387-1480
FAX (414) 387-1484

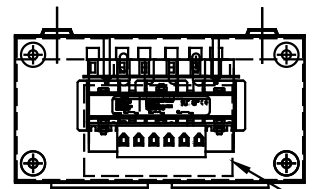
4V/6TCLUARD
KLC OUTPUT FILTER

WIRING DIAGRAM



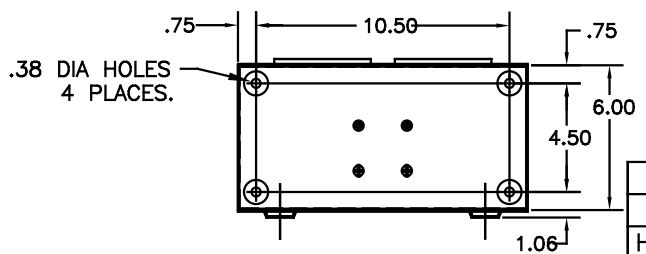
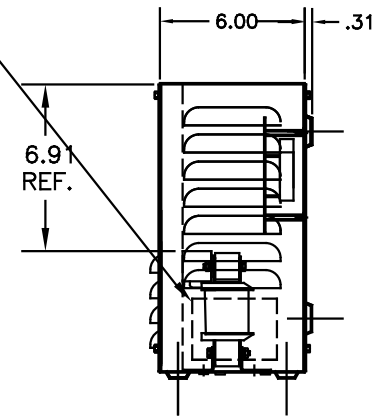
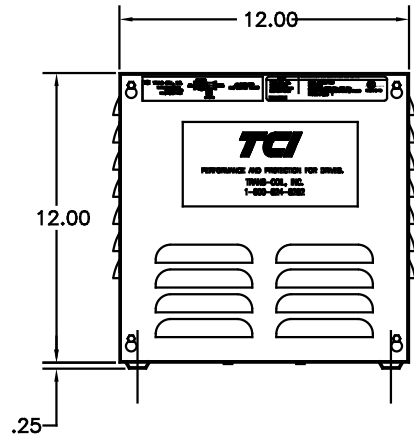
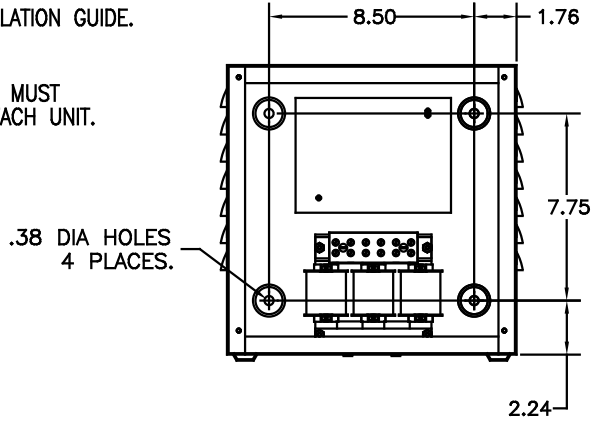
SEE: KLC/KLCUL INSTALLATION GUIDE.
TCI# 25389

NOTE: INSTALLATION GUIDE MUST
BE SHIPPED WITH EACH UNIT.



RECOMMENDED CONDUIT
ENTRANCE AREA -
TOP, LOWER LEFT SIDE,
AND LOWER RIGHT SIDE.

CATALOG NO.	KLCUL25A1
VOLTS	480
AMPS	25
KLR PART NO.	KLR25BTB
KLR BOARD NO.	24490
APPROX. WT.-LBS	21
BLOCK WIRE RANGE FOR REACTOR AND TIGHTENING TORQUE.	#18-#4 AWG 20 LB-IN



NOTE: CABINET
MATERIAL: #16 GA STEEL
FINISH: COLOR, BEIGE.

CUSTOMER IS RESPONSIBLE FOR INSTALLATION
TO MEET ALL NATIONAL AND LOCAL ELECTRICAL
CODES

				TOLERANCES (EXCEPT AS NOTED)
				DECIMAL
H	2455 UPDATE SCHEM.	10/02/06	DSW	.XX ±.03
G	2413, REMOVE GRD.	2/14/06	DSW	.XXX±.01
F	2326 UPDATE BOARD	07/28/05	DSW	FRACTIONAL ± 1/32
E	2314, UPDATE LOUVERS	08/24/04	DSW	ANGULAR ± 1/2°
NO	REVISION	DATE	BY	

TCI 7878 N. 86th STREET
MILWAUKEE, WI 53224

KLCUL ENCLOSED OUTPUT
FILTER, 480V, KLCUL25A1

DRN. BY DSW DATE 04-04-08 DWG. NO. 101219DG
SCALE 3/16"=1" APPRD. B SH. 1 OF 1