

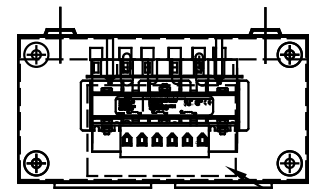
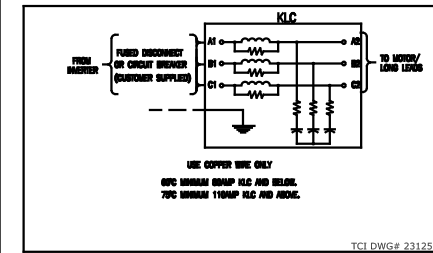
**UL** LISTED  
**UL** 508 CLASS. 55. 480  
**UL** 508 CLASS. 55. 480  
**UL** 508 CLASS. 55. 480

PERFORMANCE AND PROTECTION FOR DRIVES.  
**KLCUL Output Filter**  
**KLCUL21A1**  
 3PH, 60HZ, 600V Max, 21A Max  
 Deg #: 101217DG Schematic #: 25389  
 Enclosure type: 1

LINE CODE

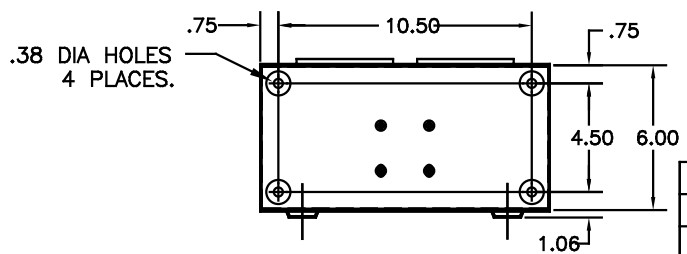
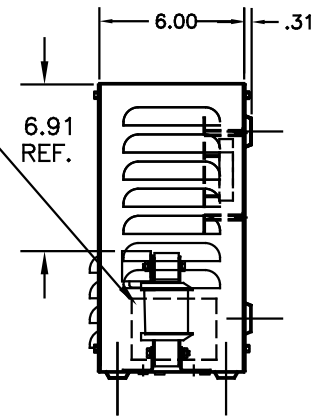
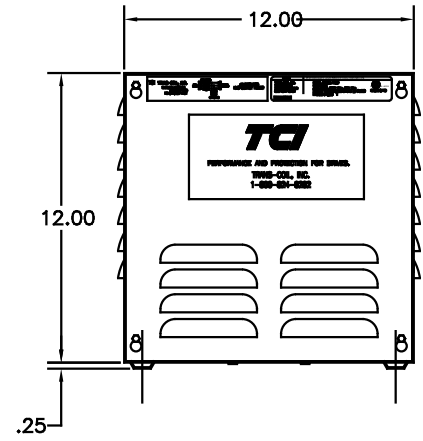
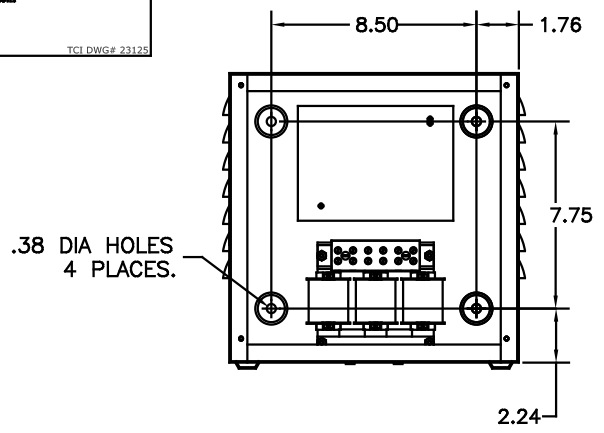
**TCI TRANS-COIL, INC.**  
 MILWAUKEE, WISCONSIN  
 (414) 387-4488  
 FAX (414) 387-4484

dv/dt/GIARD  
**KLC OUTPUT FILTER**



RECOMMENDED CONDUIT  
 ENTRANCE AREA -  
 TOP, LOWER LEFT SIDE, AND  
 LOWER RIGHT SIDE.

CATALOG NO.	KLCUL21A1
VOLTS	480
AMPS	21
KLR PART NO.	KLR21BTB
KLR BOARD NO.	24490
APPROX. WT.-LBS	21
BLOCK WIRE RANGE FOR REACTOR AND TIGHTENING TORQUE.	#18-#4 AWG 20 LB-IN



CUSTOMER IS RESPONSIBLE FOR INSTALLATION  
 TO MEET ALL NATIONAL AND LOCAL ELECTRICAL  
 CODES

NOTE: CABINET  
 MATERIAL: #16 GA STEEL  
 FINISH: COLOR, BEIGE.

				TOLERANCES (EXCEPT AS NOTED)
				DECIMAL
H	2455 UPDATE SCHEM.	10/02/06		.XX ±.03
G	2413, REMOVE GRD.	2/14/06	DSW	.XXX±.01
F	2326 UPDATE BOARD	07/28/05	DSW	FRACTIONAL ± 1/32
E	2314, UPDATE LOUVERS	08/24/04	DSW	ANGULAR ± 1/2°
NO	REVISION	DATE	BY	

**TCI** 7878 N. 86th STREET  
 MILWAUKEE, WI 53224

**KLCUL ENCLOSED OUTPUT  
 FILTER, 480V, KLCUL21A1**

DRN. BY DSW DATE 04-04-08 DWG. NO. 101217DG  
 SCALE 3/16"=1" APPRD. B SH. 1 OF 1