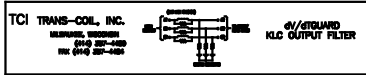


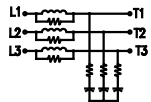
NEW PERFORMANCE AND PROTECTION FOR INDUSTRY

Trans-Coil, Inc. KLCUL Enclosed Filter
 Milwaukee, WI
 414-253-4400
 414-253-4401
 Fax # 414-253-4402
 Website: www.transcoil.com

UL LISTED
 25000 VOLTAGE CLASSIFICATION
 15A AMPERE RATING
 480V NOMINAL VOLTAGE
 100% DUTY CYCLE
 100% EFFICIENCY
 100% RELIABILITY
 100% SAFETY

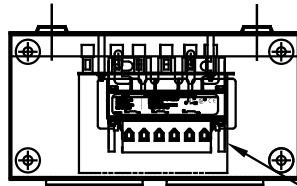


WIRING DIAGRAM



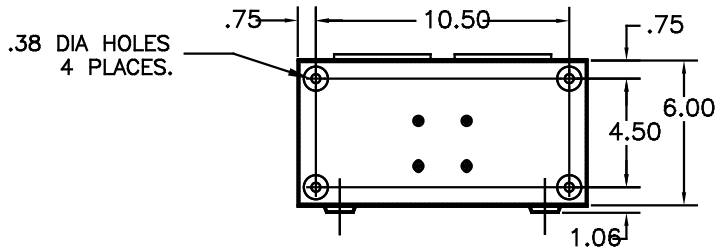
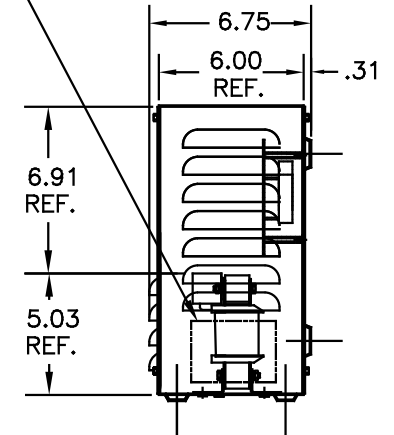
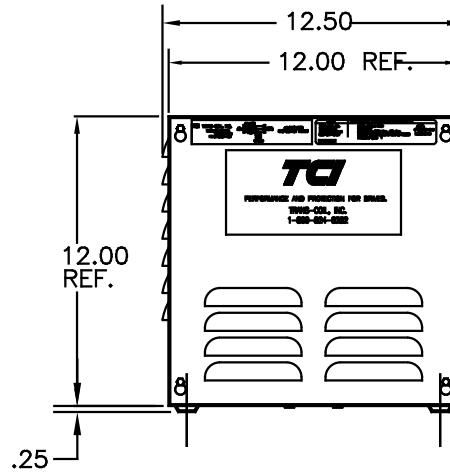
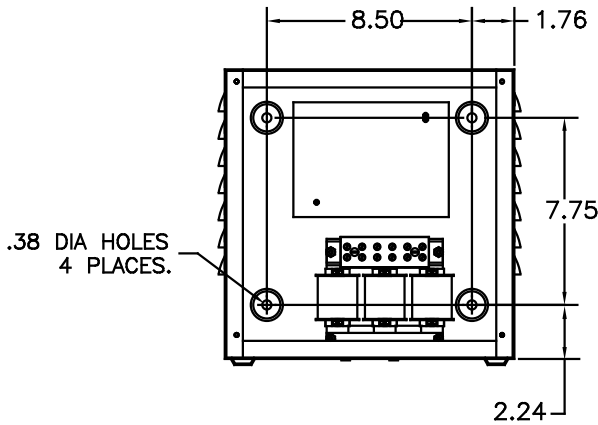
SEE: KLC/KLCUL INSTALLATION GUIDE.
 TCI# 25389

NOTE: INSTALLATION GUIDE MUST
 BE SHIPPED WITH EACH UNIT.



RECOMMENDED CONDUIT
 ENTRANCE AREA –
 TOP, LOWER LEFT SIDE, AND
 LOWER RIGHT SIDE.

CATALOG NO.	KLCUL16A1
VOLTS	480
AMPS	16
KLR PART NO.	KLR16BTB
KLR BOARD NO.	24489
APPROX. WT.-LBS	18
BLOCK WIRE RANGE FOR REACTOR AND TIGHTENING TORQUE.	#18-#4 AWG 20 LB-IN



NOTE: CABINET
 MATERIAL: #16 GA STEEL.
 FINISH: COLOR, BEIGE.

CUSTOMER IS RESPONSIBLE FOR INSTALLATION
 TO MEET ALL NATIONAL AND LOCAL ELECTRICAL
 CODES

				TOLERANCES (EXCEPT AS NOTED)
				DECIMAL
U	2455 UPDATE SCHEM.	10/02/06	DSW	.XX ±.03
I	2413 REMOVE GRD.	2/14/06	DSW	.XXX±.01
H	2326 UPDATE BOARD	07/27/05	DSW	FRACTIONAL ± 1/32
G	2314, UPDATE LOUVERS	09/07/04	DSW	ANGULAR ± 1/2°
NO	REVISION	DATE	BY	

TCI 7878 N. 86th STREET
 MILWAUKEE, WI 53224

KLCUL ENCLOSED OUTPUT
 FILTER, 480V, KLCUL16A1

DRN. BY	DATE	DRWG. NO.
DSW	04-04-00	B 101213DG
SCALE	3/16"=1"	APPRD.
		SHT. 1 OF 1