

**PERFORMANCE AND PROTECTION FOR DRIVES**

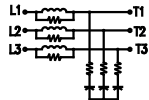
Trans-Coil, Inc.  
Milwaukee, WI  
www.transcoil.com  
800-251-2222  
LINE CODE

**KLCUL Output Filter**  
KLCUL12A1  
27A, 40°C, 600V Max, 12A Max  
Dwg # 101211DG Submittal # 25389  
Enclosure type 1

**UL LISTED**

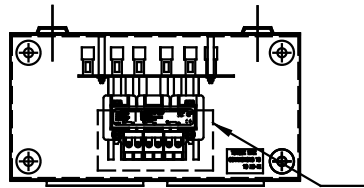
TCI TRANS-COIL, INC.  
MANUFACTURED BY  
STANDARD KLC OUTPUT FILTER

**WIRING DIAGRAM**

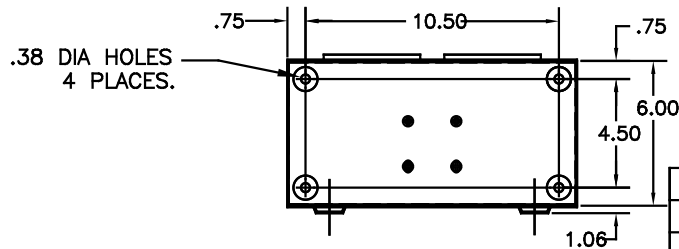
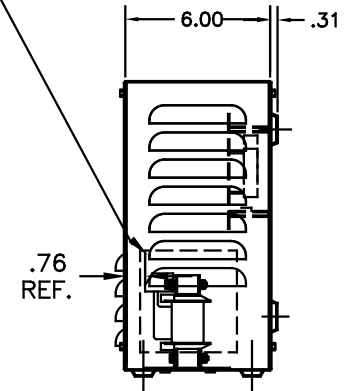
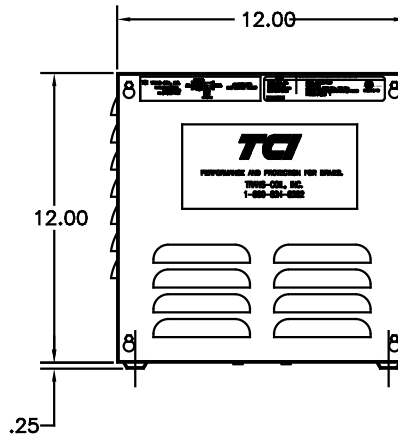
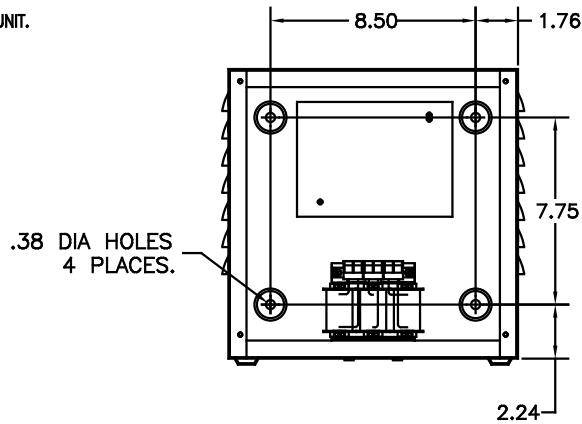


SEE: KLC/KLCUL INSTALLATION GUIDE.  
TCI# 25389

NOTE: INSTALLATION GUIDE MUST  
BE SHIPPED WITH EACH UNIT.



RECOMMENDED CONDUIT  
ENTRANCE AREA -  
TOP, LOWER LEFT SIDE, AND  
LOWER RIGHT SIDE.



NOTE: CABINET  
MATERIAL: #16 GA STEEL  
FINISH: COLOR, BEIGE.

CUSTOMER IS RESPONSIBLE FOR INSTALLATION  
TO MEET ALL NATIONAL AND LOCAL ELECTRICAL  
CODES

				TOLERANCES (EXCEPT AS NOTED)	7878 N. 86th STREET MILWAUKEE, WI 53224	
				DECIMAL		
H	2455 UPDATE SCHEM.	10/02/06	DSW	.XX ±.03	<b>KLCUL ENCLOSED OUTPUT FILTER, 480V, KLCUL12A1</b>	
G	2413, REMOVE GRD.	2/14/06	DSW	.XXX±.01		
F	2326 UPDATE BOARDS	07/19/05	DSW	FRACTIONAL ± 1/32		
E	2314, UPDATE LOUVERS	08/24/04	DSW	ANGULAR ± 1/2°		
NO	REVISION	DATE	BY			
				DRN. BY	DATE	DWG. NO.
				SCALE	APPRD.	
				DSW	04-04-00	B 101211DG
				3/16"=1"		SHT. 1 OF 1