

PERFORMANCE AND PROTECTION FOR DRIVES.

Trans-Coil, Inc.
Milwaukee, WI
www.transcoil.com
800-824-8282

KLCUL Output Filter
KLCUL6A1
3PH, 60HZ, 600V Max, 6A Max
Dwg #: 101207DG Schematic #: 25389
Enclosure type: 1

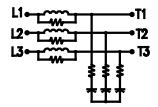
UL LISTED
EQUIV. TO IEC 60947-4-1

DATE CODE:

TCI TRANS-COIL, INC.
MILWAUKEE, WISCONSIN
(414) 387-4480
FAX (414) 387-4484

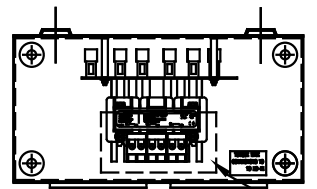
dv/dt GUARD
KLC OUTPUT FILTER

WIRING DIAGRAM



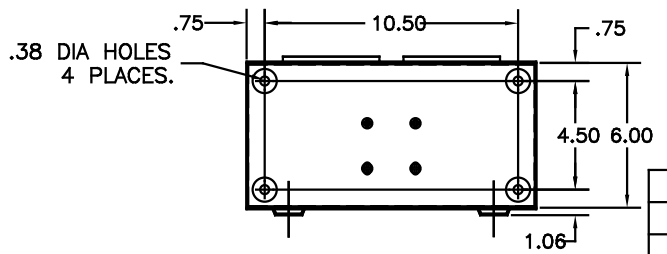
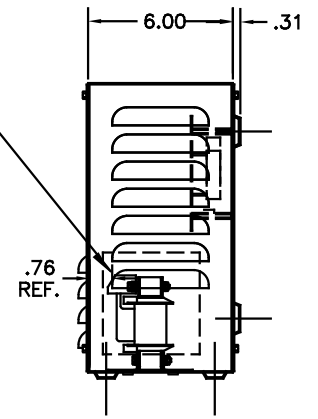
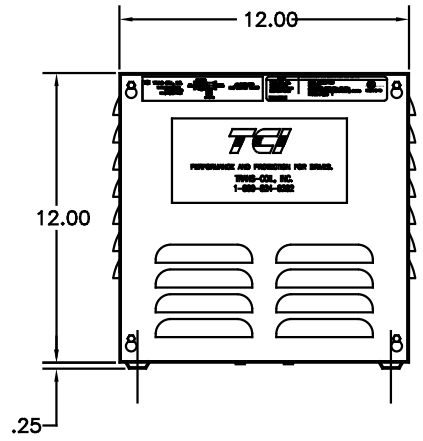
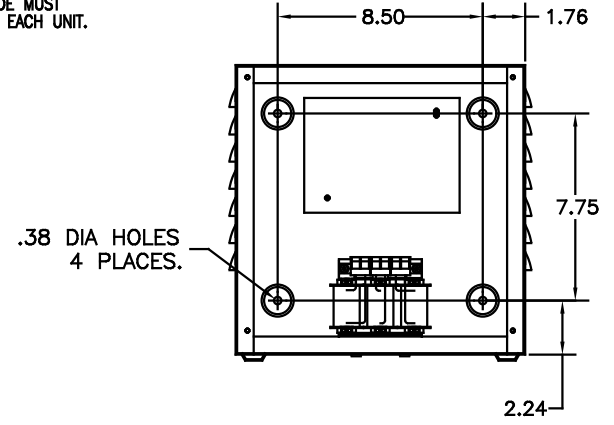
SEE: KLC/KLCUL INSTALLATION GUIDE.
TCI# 25389

NOTE: INSTALLATION GUIDE MUST
BE SHIPPED WITH EACH UNIT.



RECOMMENDED CONDUIT
ENTRANCE AREA -
TOP, LOWER LEFT SIDE, AND
LOWER RIGHT SIDE.

CATALOG NO.	KLCUL6A1
VOLTS	480
AMPS	6
KLR PART NO.	KLR6BTB
KLR BOARD NO.	24680
APPROX. WT.-LBS	15
BLOCK WIRE RANGE FOR REACTOR AND TIGHTENING TORQUE.	#12-#18 AWG 10 LB-IN



NOTE: CABINET
MATERIAL: #16 GA STEEL.
FINISH: COLOR, BEIGE.

CUSTOMER IS RESPONSIBLE FOR INSTALLATION
TO MEET ALL NATIONAL AND LOCAL ELECTRICAL
CODES

				TOLERANCES (EXCEPT AS NOTED)
				DECIMAL
				.XX ±.03
				.XXX ±.01
				FRACTIONAL
I	2455 UPDATE SCHEM.	10/02/06	DSW	± 1/32
I	2413, REMOVE GRD	2/14/06	DSW	
NO	REVISION	DATE	BY	ANGULAR
				± 1/2°

TCI 7878 N. 86th STREET
MILWAUKEE, WI 53224

KLCUL ENCLOSED OUTPUT
FILTER, 480V, KLCUL6A1

DRW. BY	DATE	DRWG. NO.
DSW	04-04-00	B 101207DG
SCALE	3/16"=1"	APPRD.
		SHT. 1 OF 1