

PERFORMANCE AND PROTECTION FOR DRIVES.

Trans-Coil, Inc.  
Milwaukee, WI  
www.transcoil.com  
800-824-8282

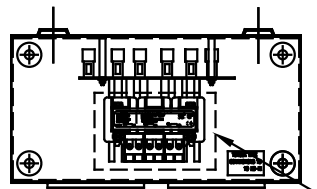
KLCUL Output Filter  
KLCUL4A1  
SP4, 60HZ, 600V Max, 4A Max  
Dwg #: 101205DG Schematic #: 25389  
Enclosure type: 1

UL LISTED  
NO. 60813, 60814

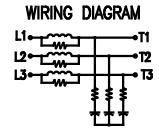
TCI TRANS-COIL, INC.  
MILWAUKEE, WISCONSIN  
(414) 357-4489  
FAX (414) 357-4484

dv/dtGUARD  
KLC OUTPUT FILTER

CATALOG NO.	KLCUL4A1
VOLTS	480
AMPS	4
KLR PART NO.	KLR4BTB
KLR BOARD NO.	24680
APPROX. WT.-LBS	15
BLOCK WIRE RANGE FOR REACTOR AND TIGHTENING TORQUE.	#12-#18 AWG 10 LB-IN

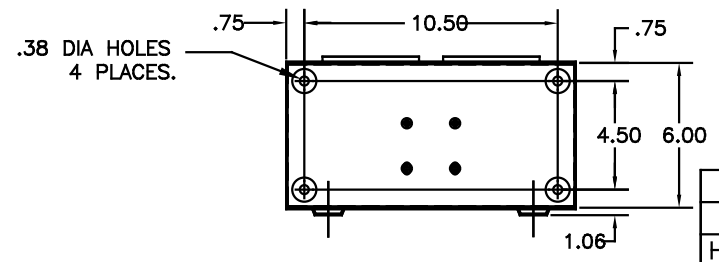
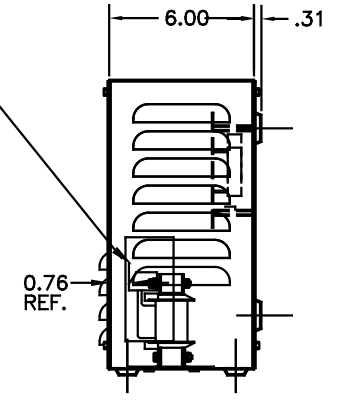
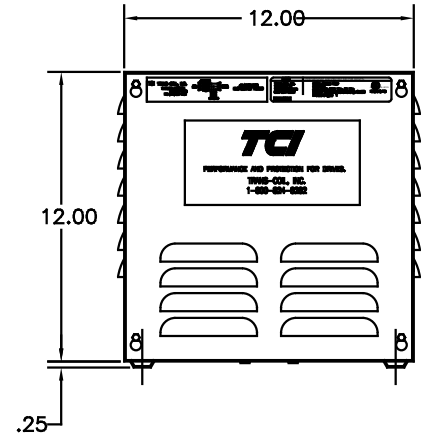
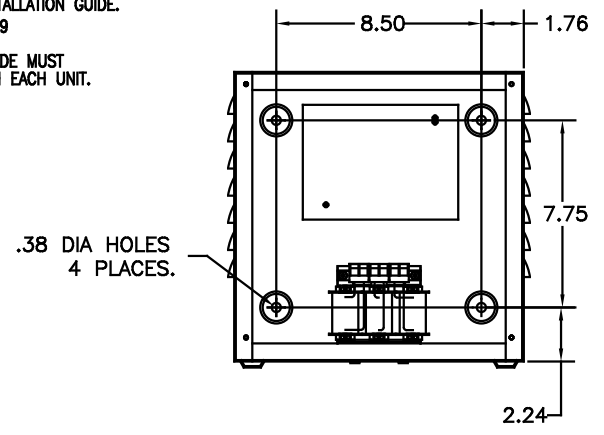


RECOMMENDED CONDUIT ENTRANCE AREA - TOP, LOWER LEFT SIDE, AND LOWER RIGHT SIDE.



SEE: KLC/KLCUL INSTALLATION GUIDE.  
TCI# 25389

NOTE: INSTALLATION GUIDE MUST BE SHIPPED WITH EACH UNIT.



NOTE: CABINET MATERIAL: #16 GA STEEL. FINISH: COLOR, BEIGE.

CUSTOMER IS RESPONSIBLE FOR INSTALLATION TO MEET ALL NATIONAL AND LOCAL ELECTRICAL CODES

				TOLERANCES (EXCEPT AS NOTED)
				DECIMAL
H	2455 UPDATE SCHEM.	10/2/06	DSW	.XX ±.03
G	2413, REMOVE GRD.	2/14/06	DSW	.XXX±.01
F	2326, BOARD CHANGE	11/16/04	DSW	FRACTIONAL ± 1/32
E	2314, UPDATE LOUVERS	08/24/04	DSW	ANGULAR ± 1/2°
NO	REVISION	DATE	BY	

**TCI** 7878 N. 86th STREET MILWAUKEE, WI 53224

KLCUL ENCLOSED OUTPUT FILTER, 480V, KLCUL4A1

DRW. BY	DATE	DRWG. NO.
DSW	04-04-00	B 101205DG
SCALE	APPRD.	
3/16"=1"		