

PERFORMANCE AND PROTECTION FOR DRIVES	
Trans-Coil, Inc. Milwaukee, WI www.transcoil.com 800-824-6222	<b>KLCUL Output Filter</b> <b>KLCUL3A1</b> 3PH, 80HZ, 0-600V Max, 3A Max Desig. #: 101203DG Schematic #: 25389 Enclosure type: 1
UL LISTED	
DATE CODE	

TCI TRANS-COIL, INC.  
 MILWAUKEE, WISCONSIN  
 (414) 357-4400  
 FAX (414) 357-4404

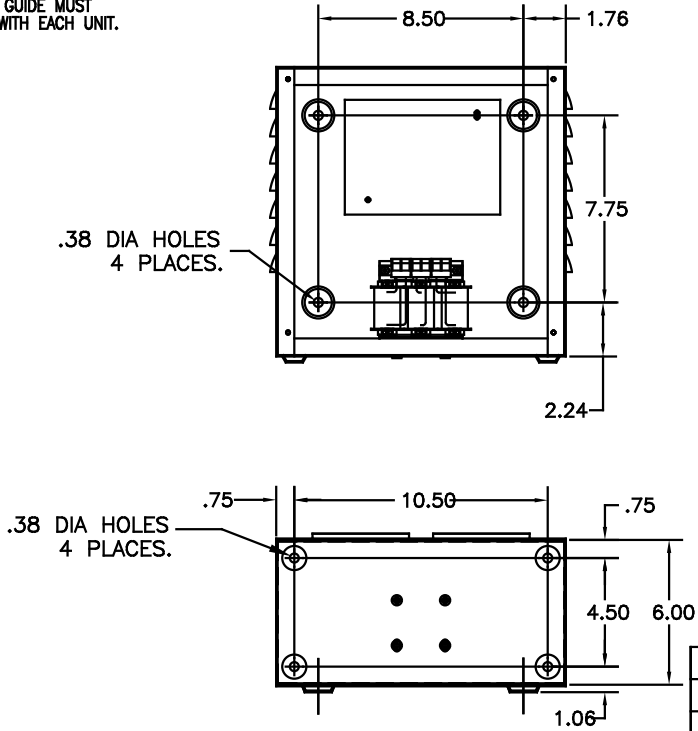
dV/dt GUARD  
 KLC OUTPUT FILTER

CATALOG NO.	KLCUL3A1
VOLTS	480
AMPS	3
KLR PART NO.	KLR3BTB
KLR BOARD NO.	24680
APPROX. WT.-LBS	15
BLOCK WIRE RANGE FOR REACTOR AND	#12-#18 AWG
TIGHTENING TORQUE.	10 LB-IN

RECOMMENDED CONDUIT ENTRANCE AREA - TOP, LOWER LEFT SIDE, AND LOWER RIGHT SIDE.

SEE: KLC/KLCUL INSTALLATION GUIDE.  
 TCI# 25389

NOTE: INSTALLATION GUIDE MUST BE SHIPPED WITH EACH UNIT.



NOTE: CABINET MATERIAL: #16 GA STEEL. FINISH: COLOR, BEIGE.

CUSTOMER IS RESPONSIBLE FOR INSTALLATION TO MEET ALL NATIONAL AND LOCAL ELECTRICAL CODES

				TOLERANCES (EXCEPT AS NOTED)	7878 N. 86th STREET MILWAUKEE, WI 53224
				DECIMAL	
H	2455 UPDATE SCHEM.	10/02/06	DSW	.XX ±.03	<b>KLCUL ENCLOSED OUTPUT FILTER, 480V, KLCUL3A1</b> DRN. BY DSW DATE 04-04-08 DRWG. NO. B 101203DG SCALE 3/16"=1" APPRD.
G	2413, REMOVE GRD.	02/14/06	DSW	.XXX ±.01	
F	2326, BOARD CHANGE	11/16/04	DSW	FRACTIONAL ± 1/32	
E	2314, UPDATE LOUVERS	08/24/04	DSW	ANGULAR ± 1/2°	
NO	REVISION	DATE	BY		SHT. 1 OF 1