

TCI TRANS-COIL, INC.
MILWAUKEE, WISCONSIN
(414) 387-4480
FAX (414) 387-4484

dV/dtGUARD
KLC OUTPUT FILTER

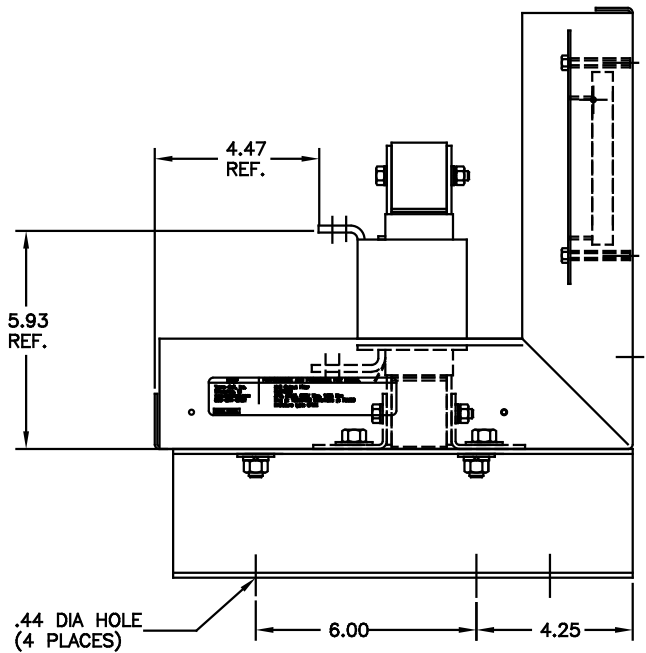
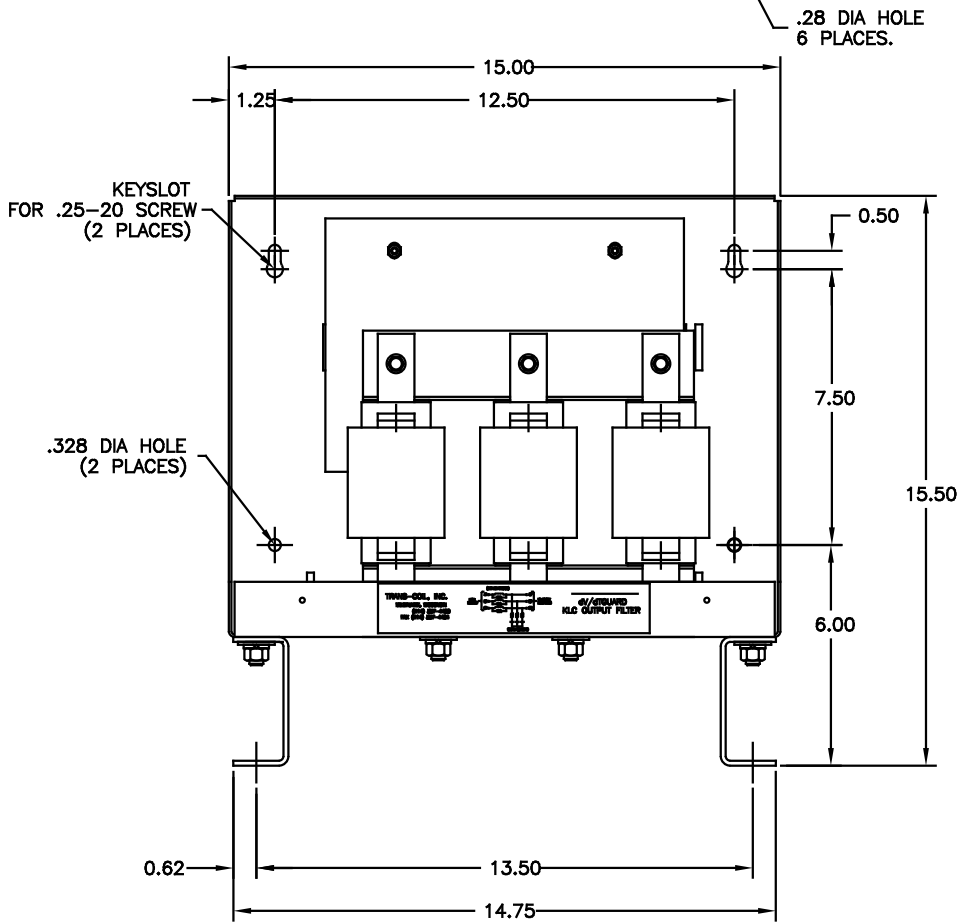
TCI PERFORMANCE AND PROTECTION FOR DRIVES.

Trans-Coil, Inc.
Milwaukee, WI
www.transcoil.com
800-824-8282

KLC Output Filter
KLC130B
3PH, 60HZ, 600V Max, 130A Max
Dwg #: 100391DG Schematic #: 25389
Enclosure type: OPEN

DATE CODE

CUSTOMER IS RESPONSIBLE FOR INSTALLATION TO MEET ALL NATIONAL AND LOCAL ELECTRICAL CODES



NOTES:
MATERIAL:
BASE: #12GA STEEL
COVER: #14GA STEEL
MOUNTING LEGS: #12GA STEEL
FINISH: BEIGE
TERMINAL HOLE SIZE: .28 DIA
APPROX WEIGHT: 52 LBS

NO	REVISION	DATE	BY	TOLERANCES (UNLESS AS NOTED)
U	UPDATE LABELS	03/28/06	DSW	DECIMAL
C	2326 UPDATE BOARD	07/15/06	DSW	.XX ±.03
B	ECO# 2002 REMOVE			.XXX±.010
	FLAT WASHER'S	7/20/00	DSW	FRACTIONAL ± 1/16
A	SEE ECO #1840	10-4-98	BW	ANGULAR ± 1/2°

TCI 7878 N. 86th STREET
MILWAUKEE, WI 53224

ENCLOSURE
KLC130B

DATE BY 08-05-98
SCALE 3/8"=1"

APP'D. C 100391DG
SHT. 1 OF 1