

TCI TRANS-COIL, INC.
MILWAUKEE, WISCONSIN
9140 287-4488
TEL: 914-287-4488

dV/dtGUARD
KLC OUTPUT FILTER

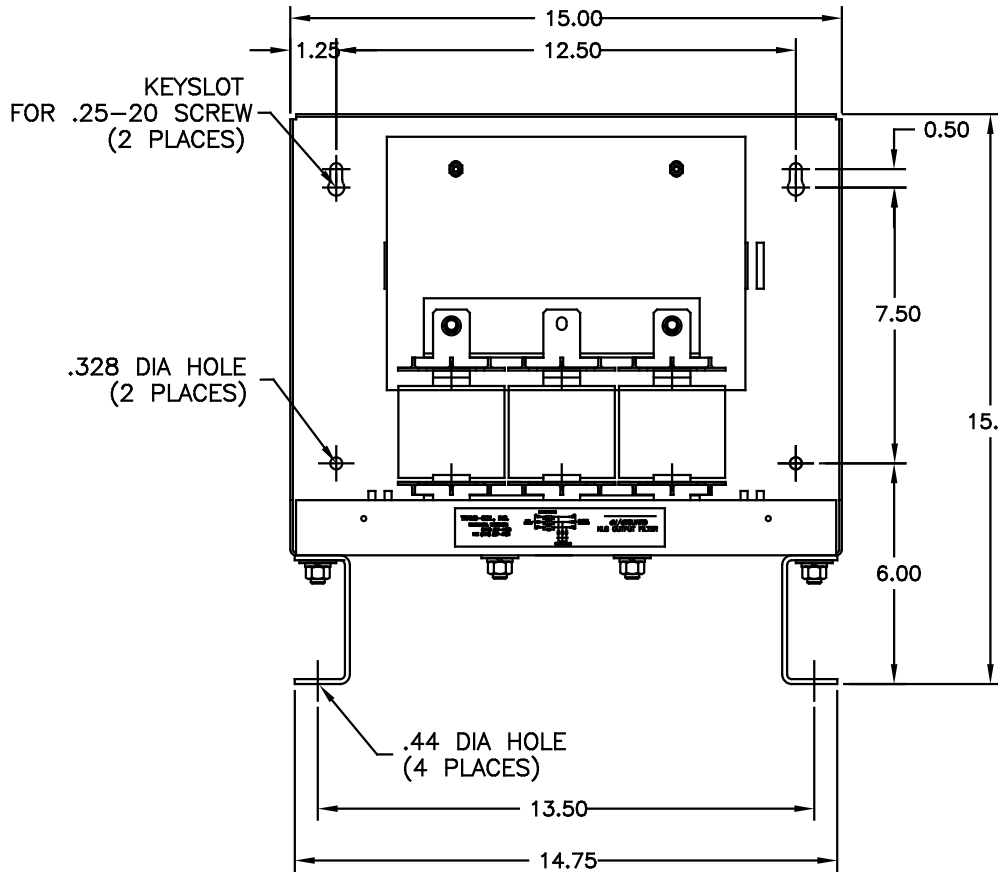
PERFORMANCE AND PROTECTION FOR DRIVES.

Trans-Coil, Inc.
Milwaukee, WI
www.transcoil.com
800-624-6262

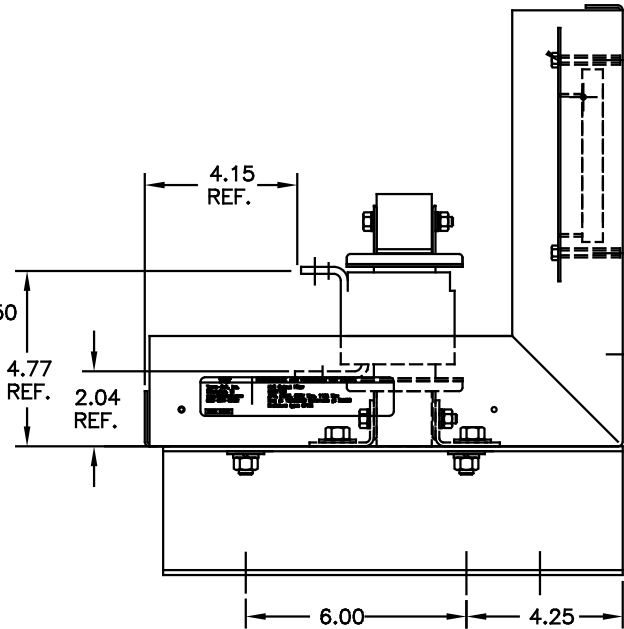
KLC Output Filter
KLC110B
3PH, 80A, 600V Max, 110A Max
Deg # 1003900 Schematic # 23389
Enclosure type: OPEN

DATE CODE

.28 DIA HOLE
6 PLACES.



CUSTOMER IS RESPONSIBLE FOR INSTALLATION
TO MEET ALL NATIONAL AND LOCAL ELECTRICAL
CODES



NOTES:
MATERIAL:
BASE: #12GA STEEL
COVER: #14GA STEEL
MOUNTING LEGS: #12GA STEEL
FINISH: BEIGE
TERMINAL HOLE SIZE: .28 DIA
APPROX WEIGHT: 45 LBS

NO	REVISION	DATE	BY	TOLERANCES (UNLESS AS NOTED)
1	UPDATE LABELS	3/28/06	DSW	DECIMAL
2	2326 UPDATE BOARD	07/15/06	DSW	.XX ±.03
3	ECO#2002 REMOVE			.XXX±.010
4	FLAT WASHER'S	7/20/00	DSW	FRACTIONAL
5	SEE ECO #1840	10-4-98	BW	± 1/16
6				ANGULAR
7				± 1/2

TCI 7878 N. 86th STREET
MILWAUKEE, WI 53224

ENCLOSURE
KLC110B

DATE BY 08-05-98 100390DG
SCALE 3/8"=1" APPROX

SHT. 1 OF 1