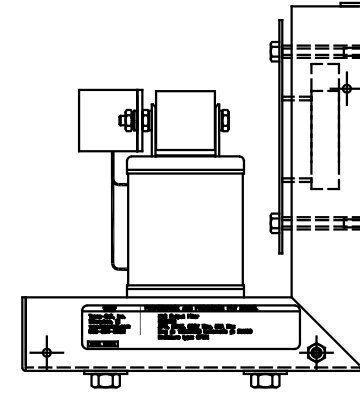
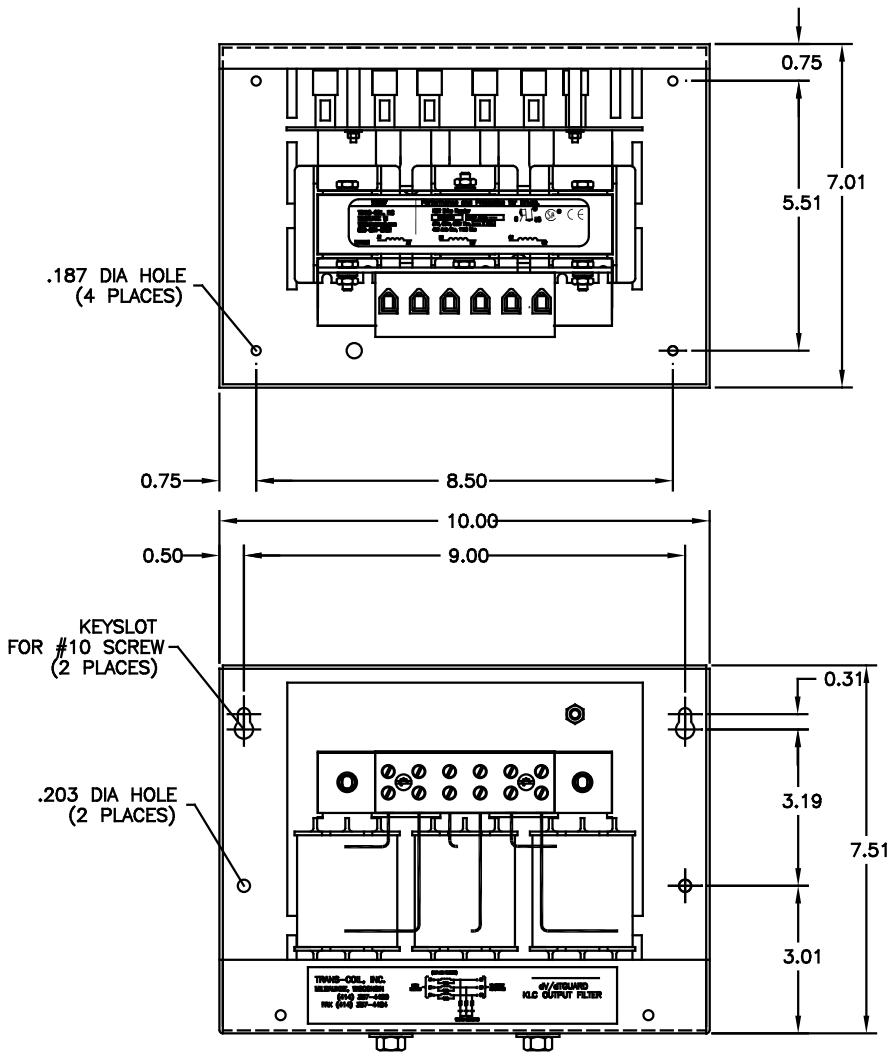


**TCI** PERFORMANCE AND PROTECTION FOR DRIVES.  
 Trans-Coil, Inc.  
 Milwaukee, WI  
 www.transcoil.com  
 800-824-8282

**KLC Output Filter**  
**KLC55B**  
 3PH, 50HZ, 600V Max, 55A Max  
 Diag #: 100388DG Schematic #: 25389  
 Enclosure type: OPEN

[DATE CODE]

CUSTOMER IS RESPONSIBLE FOR INSTALLATION TO MEET ALL NATIONAL AND LOCAL ELECTRICAL CODES



**NOTES:**  
 MATERIAL: #16GA STEEL  
 FINISH: BEIGE  
 TORQUE(LB-IN): 20  
 APPROX WEIGHT: 15 LBS  
 WIRE SIZE: #4-#18 AWG

				TOLERANCES (UNLESS AS NOTED)	
				DECIMAL	
				.XX ±.03	
				.XXX±.010	
U	UPDATE LABELS	03/28/06	DSW	FRACTIONAL ± 1/16	
E	2326, BOARD UPDATE	06/30/08	DSW	ANGULAR ± 1/2"	
A	SEE ECO #1840	10-4-98	BW		
NO	REVISION	DATE	BY		

**TCI** 7878 N. 86th STREET  
MILWAUKEE, WI 53224

ENCLOSURE  
KLC55B

DATE BY DATE 08-05-98 DRAW. NO. 100388DG  
SCALE 1/2"=1" APPROX. C