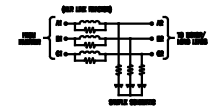


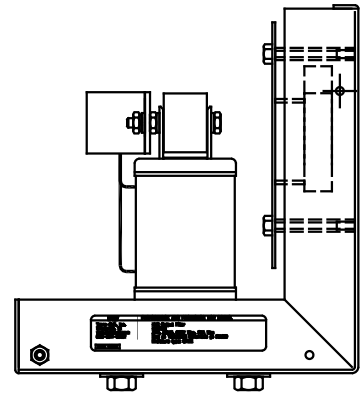
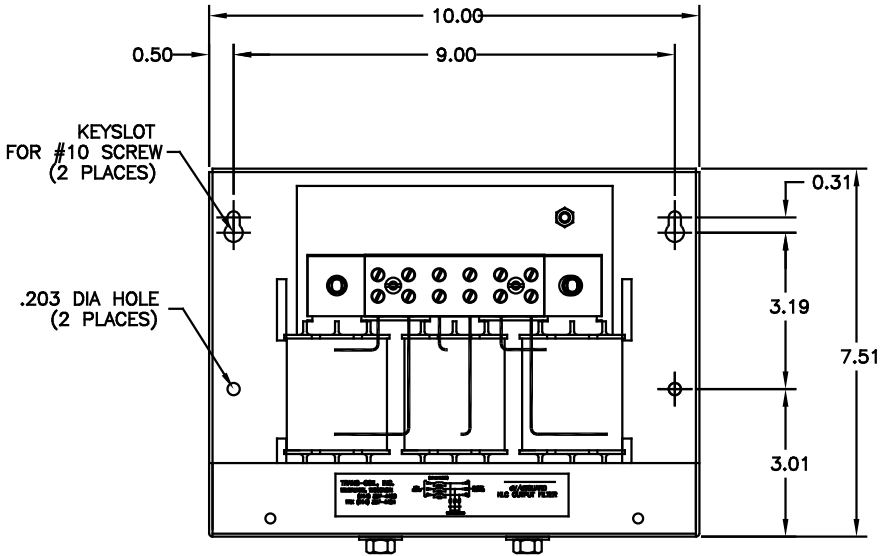
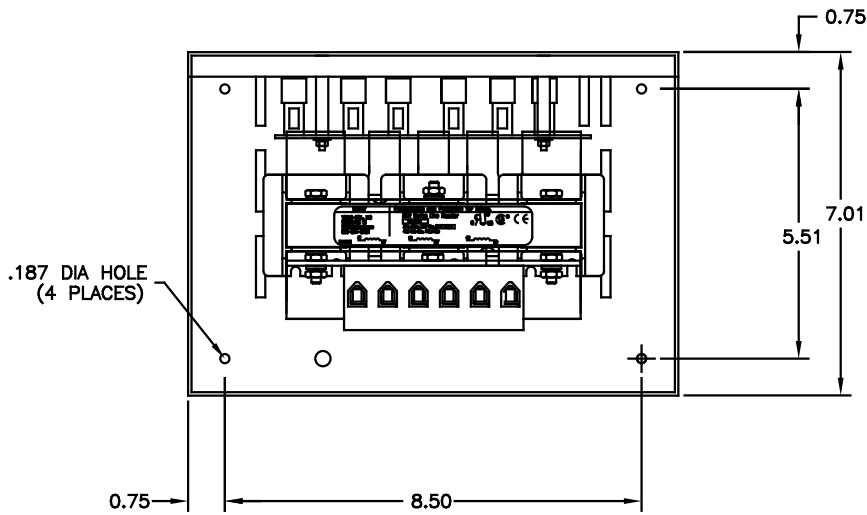
TCI TRANS-COIL, INC.
MILWAUKEE, WISCONSIN
(414) 267-4480
FAX (414) 267-4484



dV/dtGUARD
KLC OUTPUT FILTER

<p>TCI Trans-Coil, Inc. Milwaukee, WI www.transcoil.com 800-824-8282</p>	<p>PERFORMANCE AND PROTECTION FOR DRIVES.</p>
	<p>KLC Output Filter KLC25B 3PH, 60HZ, 600V Max, 25A Max Dwg #: 100385DG Schematic #: 25389 Enclosure type: OPEN</p>

DATE CODE



CUSTOMER IS RESPONSIBLE FOR INSTALLATION TO MEET ALL NATIONAL AND LOCAL ELECTRICAL CODES

NOTES:
MATERIAL: #16GA STEEL
FINISH: BEIGE
TORQUE(LB-IN): 20
APPROX WEIGHT: 13 LBS
WIRE SIZE: #4-#18 AWG

				TOLERANCES (EXCEPT AS NOTED)	<p>TCI 7878 N. 86th STREET MILWAUKEE, WI 53224</p>
				DECIMAL	
				.XX ±.03	ENCLOSURE KLC25B
				.XXX±.010	
U	UPDATE LABELS	03/28/06	DSW	FRACTIONAL ± 1/16	<p>DATE BY DATE 08-05-98 Dwg. NO. 100385DG SCALE 1/2"=1" APPROV. C</p>
E	2326 BOARD UPDATE	06/30/08	DSW	ANGULAR ± 1/2"	
A	SEE ECO #1840	10-4-98	BW		SHT. 1 OF 1
NO	REVISION	DATE	BY		