

TCI TRANS-COIL, INC.
MILWAUKEE, WISCONSIN
(414) 327-4482
FAX (414) 327-4484

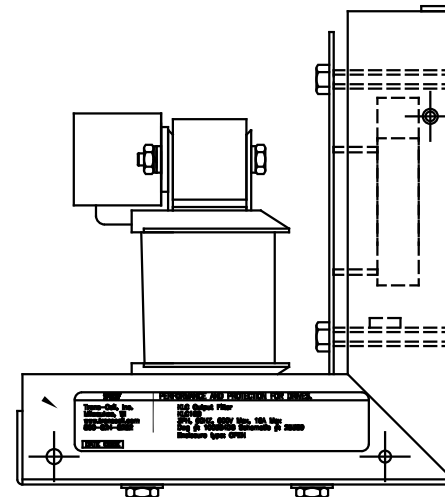
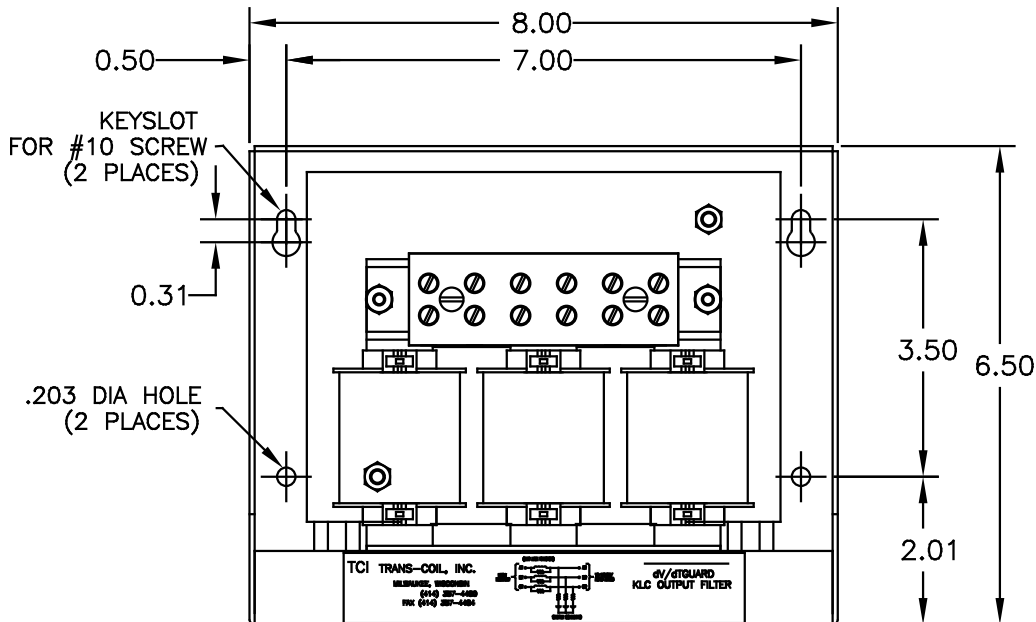
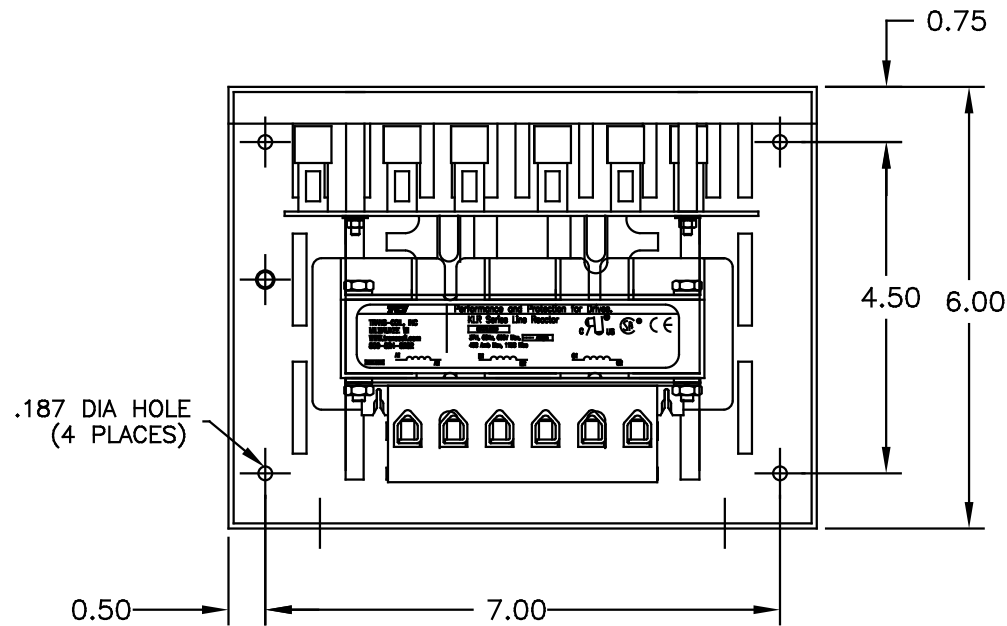
dv/dtGUARD
KLC OUTPUT FILTER

TCI PERFORMANCE AND PROTECTION FOR DRIVES.

Trans-Coil, Inc.
Milwaukee, WI
www.transcoil.com
800-824-8282

KLC Output Filter
KLC16B
3PH, 60HZ, 600V Max, 16A Max
Dwg #: 100384DG Schematic #: 25389
Enclosure type: OPEN

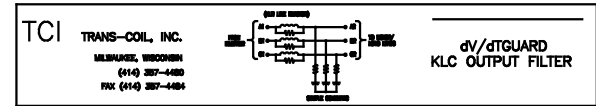
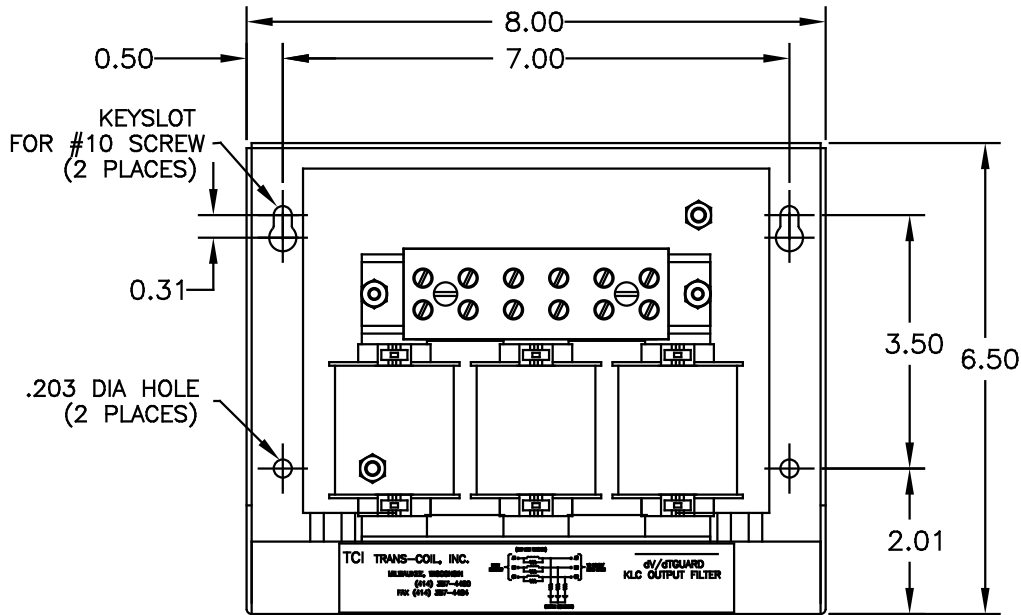
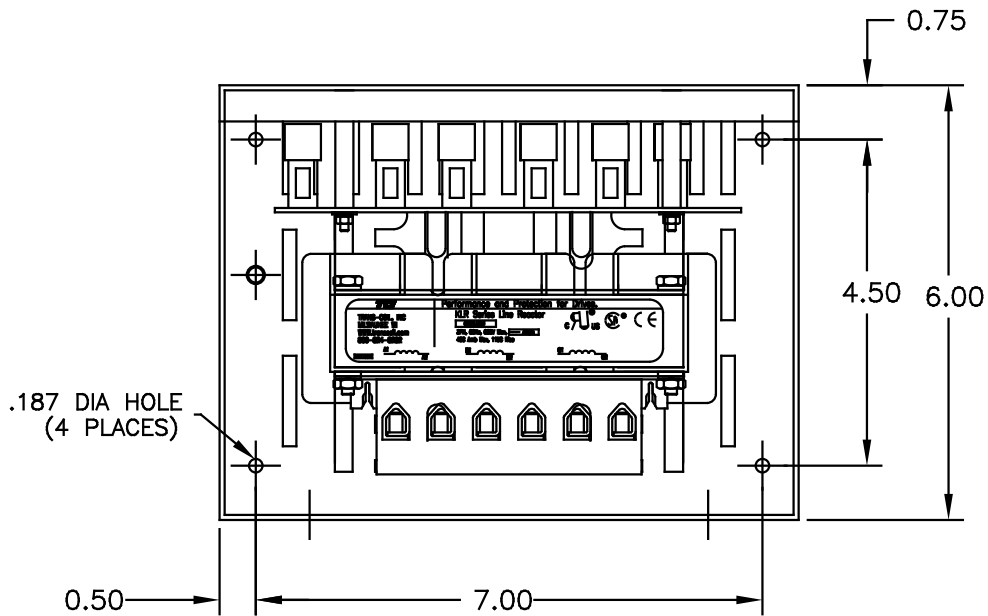
[DATE CODE]



NOTES:
MATERIAL: #16GA STEEL
FINISH: BEIGE
TORQUE(LB-IN): 20
APPROX WEIGHT: 9 LBS
WIRE SIZE: #12-#18 AWG

CUSTOMER IS RESPONSIBLE FOR INSTALLATION
TO MEET ALL NATIONAL AND LOCAL ELECTRICAL
CODES

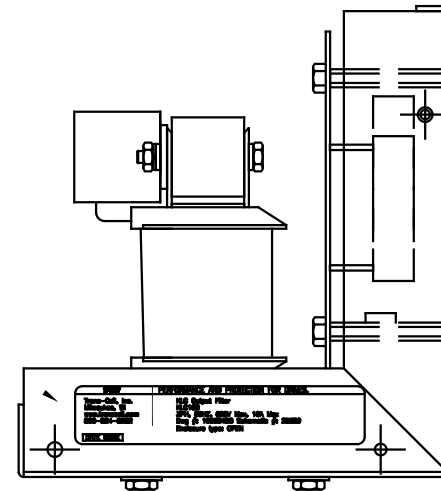
				TOLERANCES (EXCEPT AS NOTED)	TCI 7878 N. 86th STREET MILWAUKEE, WI 53224
				DECIMAL	
□	UPDATE LABELS	03/28/06	DSW	.XX ±.03	ENCLOSURE KLC16B
○	2326, BOARD UPDATED	6/29/05	DSW	.XXX±.010	
▨	CHG GRD STUD; ECO 2017	8/28/2000	BW	FRACTIONAL ± 1/16	
△	SEE ECO #1840	10-4-98	BW	ANGULAR ± 1/2°	
NO	REVISION	DATE	BY		DATE BY DATE DATE DATE NO
					SCALE 3/4"=1" APPROX. 08-05-98 100384DG
					SHT. 1 OF 1



PERFORMANCE AND PROTECTION FOR DRIVES.
 Trans-Coil, Inc.
 Milwaukee, WI
 www.transcoil.com
 800-824-8262

KLC Output Filter
 KLC16B
 3PH, 60HZ, 600V Max, 16A Max
 Dwg #: 100384DG Schematic #: 25369
 Enclosure type: OPEN

[DATE CODE]



NOTES:
 MATERIAL: #16GA STEEL
 FINISH: BEIGE
 TORQUE(LB-IN): 20
 APPROX WEIGHT: 9 LBS
 WIRE SIZE: #12-#18 AWG

CUSTOMER IS RESPONSIBLE FOR INSTALLATION TO MEET ALL NATIONAL AND LOCAL ELECTRICAL CODES

				TOLERANCES (EXCEPT AS NOTED)	
				DECIMAL	
<input type="checkbox"/>	UPDATE LABELS	03/28/08	DSW	.XX ±.03	ENCLOSURE KLC16B
<input type="checkbox"/>	2326, BOARD UPDATED	6/29/05	DSW	.XXX±.010	
<input type="checkbox"/>	CHG GRD STUD; ECO 2017	8/28/2000	BW	FUNCTIONAL ±1/16	DWN. BY BW DATE 08-05-98 DWG. NO. 100384DG SCALE 3/4"=1" APPR. C
<input type="checkbox"/>	SEE ECO #1840	10-4-98	BW	REGULAR ±1/2"	
NO	REVISION	DATE	BY	SHT. 1 of 1	