

TCI TRANS-COIL, INC.
MILWAUKEE, WISCONSIN
(414) 387-4480
FAX (414) 387-4484

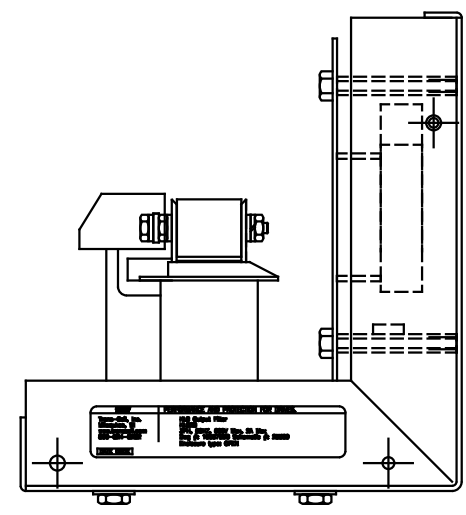
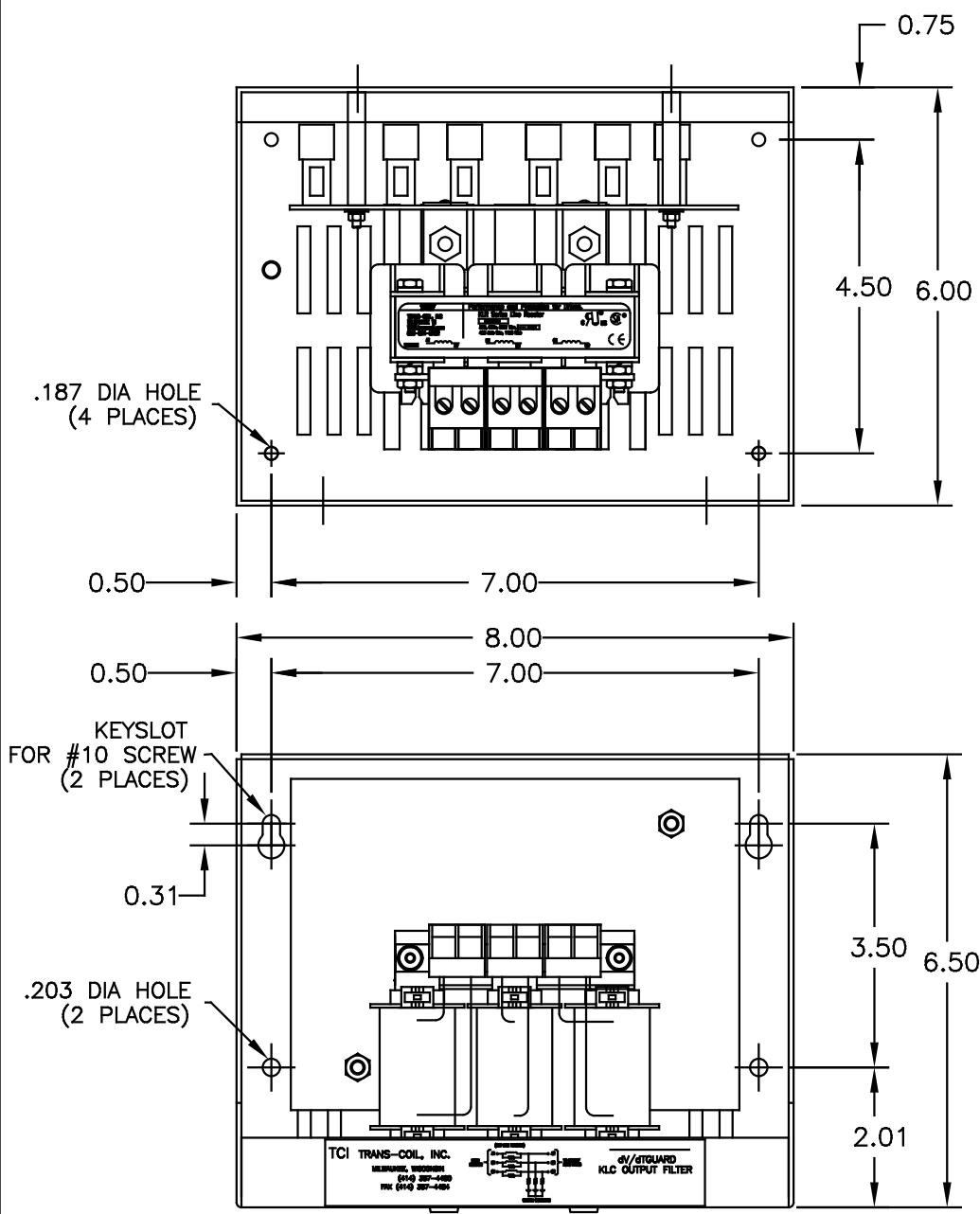
dV/dtGUARD
KLC OUTPUT FILTER

PERFORMANCE AND PROTECTION FOR DRIVES.

Trans-Coil, Inc.
Milwaukee, WI
www.transcoil.com
800-824-8282

KLC Output Filter
KLC2B
3PH, 60HZ, 600V Max, 2A Max
Dwg #: 100379DG Schematic #: 25389
Enclosure type: OPEN

DATE CODE



NOTES:
MATERIAL: #16GA STEEL
FINISH: BEIGE
TORQUE(LB-IN): 10
APPROX WEIGHT: 5.75 LBS
WIRE SIZE: #12-#18 AWG

CUSTOMER IS RESPONSIBLE FOR INSTALLATION TO MEET ALL NATIONAL AND LOCAL ELECTRICAL CODES

				TOLERANCES (UNLESS AS NOTED)
				DECIMAL
□	UPDATE LABELS	03/28/06	DSW	.XX ±.03
○	2326 UPDATE BOARDS	6/28/05	DSW	.XXX±.010
▨	CHG GRD STUD; ECO 2017	8/28/2000	BW	FRACTIONAL ± 1/16
△	SEE ECO #1840	10-4-98	BW	ANGULAR ± 1/2°
NO	REVISION	DATE	BY	

ENCLOSURE KLC2B		7878 N. 86th STREET MILWAUKEE, WI 53224	
		DATE BY 08-05-98 BW	APP'D C
NO		DATE	100379DG
SCALE		3/4"=1"	SHT. 1 OF 1