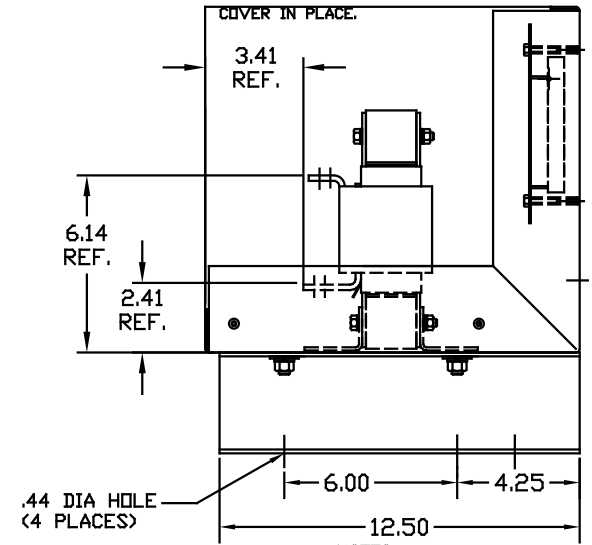


LOCATION FOR CUSTOMERS CONDUIT FITTING (BOTH SIDES)



TCI TRANS-COIL, INC.
MILWAUKEE, WISCONSIN
414 357-4488
414 357-4484

dV/dtGUARD
KLC OUTPUT FILTER

TCI PERFORMANCE AND PROTECTION FOR DRIVES.
Trans-Coil, Inc.
Milwaukee, WI
www.transcoil.com
800-824-8282

KLC Output Filter
KLC160BE
3PH, 60HZ, 600V Max, 160A Max
Dwg # 100537DG Schematic # 25389
Enclosure type 1

DATE CODE

NOTES:
MATERIAL:
BASE: #12GA STEEL
COVER: #14GA STEEL
MOUNTING LEGS: #12GA STEEL
FINISH: BEIGE
TERMINAL HOLE SIZE: .34 DIA
APPROX WEIGHT: 70 LBS

CUSTOMER IS RESPONSIBLE FOR INSTALLATION TO MEET ALL NATIONAL AND LOCAL ELECTRICAL CODES

			TOLERANCES EXCEPT AS NOTED
U	UPDATE LABELS	03/30/06 DSW	DECIMAL
C	2326 UPDATE BOARD	07/12/05 DSW	.XX ±.03
B	ECD#2002 REMOVE		.XXX ±.010
	FLAT WASHER'S	7/21/00 DSW	FRACTIONAL ± 1/16
A	SEE ECO #1839	10-4-99 BW	ANGULAR
NO	REVISION	DATE BY	± 1/2°

TCI 7878 N. 86th STREET MILWAUKEE, WI 53224	
ENCLOSURE KLC160BE	
DWG BY BW	DWG NO. 100537DG
DATE 08-05-98	SCALE TO FIT
APPROV	SHT. 1 OF 1