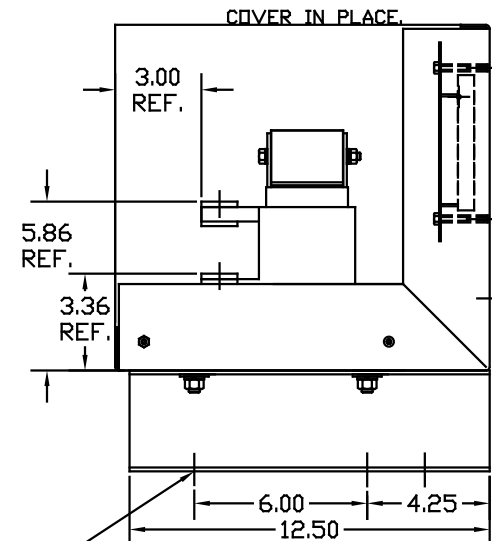
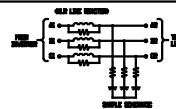


LOCATION FOR CUSTOMERS CONDUIT FITTING (BOTH SIDES)



NOTES:
 MATERIAL:
 BASE: #12GA STEEL
 COVER: #14GA STEEL
 MOUNTING LEGS: #12GA STEEL
 FINISH: BEIGE
 TERMINAL HOLE SIZE: .44 DIA
 APPROX WEIGHT: 82 LBS

TCI TRANS-COIL, INC.
 MILWAUKEE, WISCONSIN
 (414) 357-4480
 FAX (414) 357-4484



dV/dtGUARD
 KLC OUTPUT FILTER

TCI PERFORMANCE AND PROTECTION FOR DRIVES.
 Trans-Coil, Inc.
 Milwaukee, WI
 www.transcoil.com
 800-824-8282

KLC Output Filter
 KLC250BE
 3PH, 60HZ, 600V Max, 250A Max
 Dwg # 100414DG Schematic # 25389
 Enclosure type 1

DATE CODE

CUSTOMER IS RESPONSIBLE FOR INSTALLATION TO MEET ALL NATIONAL AND LOCAL ELECTRICAL CODES

| | | | TOLERANCES EXCEPT AS NOTED | |
|----|-------------------|----------|-------------------------------|------------------------|
| | | | DECIMAL | FRACTIONAL |
| U | UPDATE LABELS | 03/30/06 | DSW | |
| C | 2326 UPDATE BOARD | 07/12/05 | DSW | .XX ±.03 .XXX ±.010 |
| B | ECD#2002 REMOVE | | | |
| A | FLAT WASHER'S | 7/21/00 | DSW | ± 1/16 |
| Δ | SEE ECD #1839 | 10-4-99 | BW | ANGULAR ± 1/2° |
| NO | REVISION | DATE | BY | |

8787 N. 86th STREET
 MILWAUKEE, WI 53224

TCI ENCLOSURE
 KLC250BE

DWG BY BW DATE 08-05-98 DWG NO. 100414DG
 SCALE TO FIT APPROVAL C

SHT. 1 OF 1