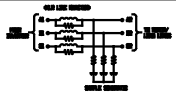


TCI TRANS-COIL, INC.  
MILWAUKEE, WISCONSIN  
414-357-4480  
FAX 414-357-4484

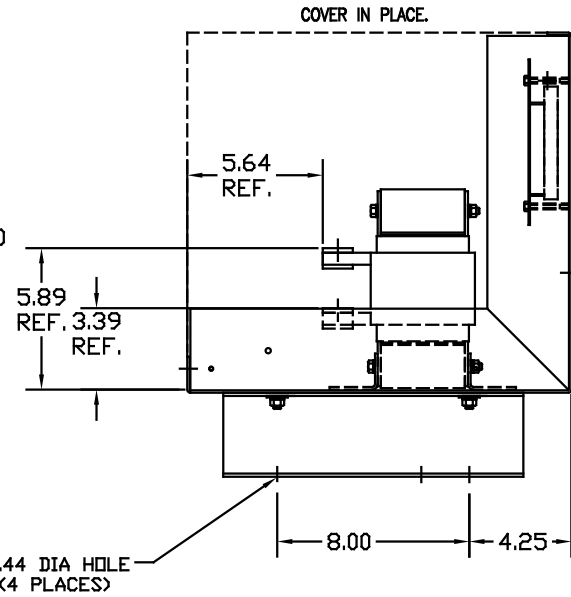
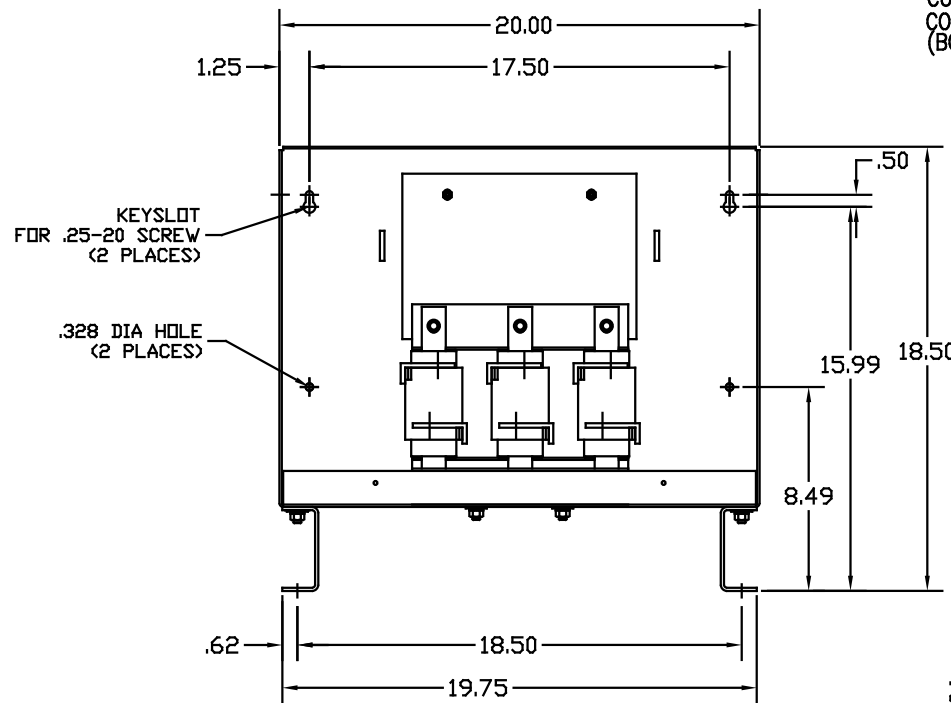
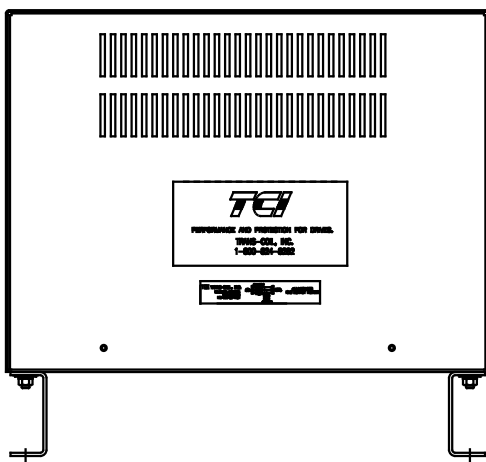
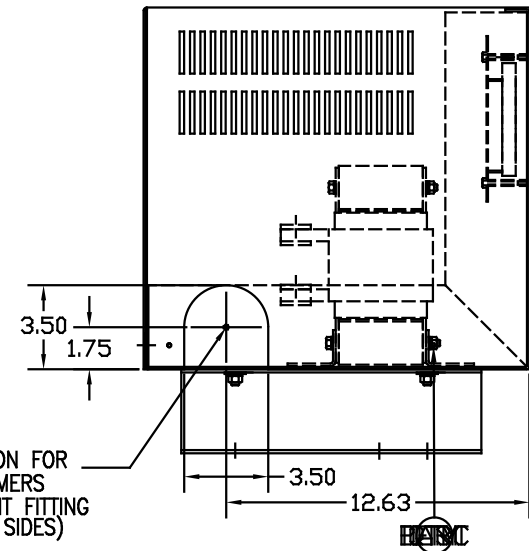
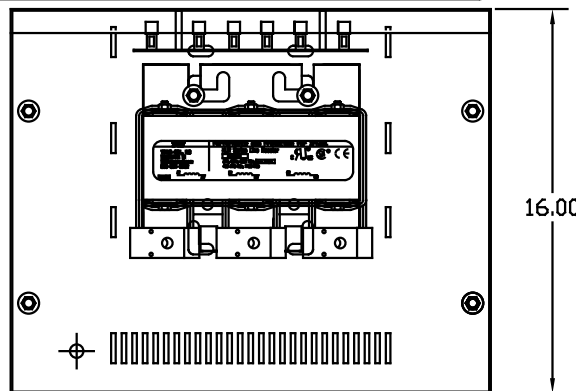
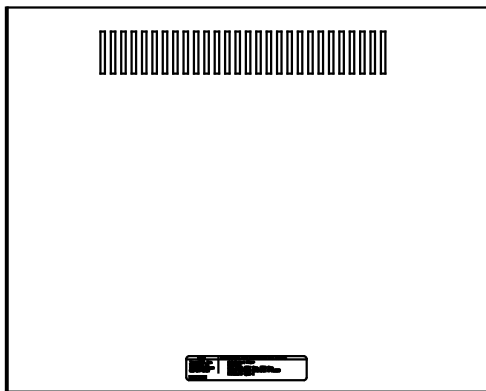


dV/dtGUARD  
KLC OUTPUT FILTER

**TCI** PERFORMANCE AND PROTECTION FOR DRIVES.  
Trans-Coil, Inc.  
Milwaukee, WI  
www.transcoil.com  
800-824-8282

KLC Output Filter  
KLC300BE  
3PH, 60HZ, 600V Max, 300A Max  
Dwg # 100402DG Schematic # 25389  
Enclosure type: 1

DATE CODE



CUSTOMER IS RESPONSIBLE FOR INSTALLATION TO MEET ALL NATIONAL AND LOCAL ELECTRICAL CODES

**NOTES:**  
MATERIAL:  
BASE: #12GA STEEL  
COVER: #14GA STEEL  
MOUNTING LEGS: #12GA STEEL  
FINISH: BEIGE  
TERMINAL HOLE SIZE: .44 DIA  
APPROX WEIGHT: 106 LBS

NO	REVISION	DATE	BY	TOLERANCES EXCEPT AS NOTED
D	UPDATE LABELS	03/30/06	DSW	DECIMAL
C	2326 UPDATE BOARD	07/12/05	DSW	.XX ± .03 .XXX ± .010
B	ECD#2002 REMOVE			FRACTIONAL ± 1/16
	FLAT WASHER'S	7/21/00	DSW	ANGULAR ± 1/2°
A	SEE ECD #1839	10-4-99	BW	
NO				

**TCI** 7878 N. 86th STREET  
MILWAUKEE, WI 53224

ENCLOSURE  
KLC300BE

DWG BY BW DATE 08-05-98 DWG NO 100402DG  
SCALE TO FIT APPROVAL C

SHT. 1 OF 1