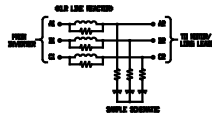


**NOTES:**  
 MATERIAL:  
 BASE: #12GA STEEL  
 COVER: #14GA STEEL  
 MOUNTING LEGS: #12GA STEEL  
 FINISH: BEIGE  
 TERMINAL HOLE SIZE: .28 DIA  
 APPROX WEIGHT: 58 LBS

TCI TRANS-COIL, INC.  
 MILWAUKEE, WISCONSIN  
 (414) 357-4480  
 FAX (414) 357-4484



dV/dtGUARD  
 KLC OUTPUT FILTER

<b>TCI</b>	<b>PERFORMANCE AND PROTECTION FOR DRIVES.</b>
Trans-Coil, Inc. Milwaukee, WI www.transcoil.com 800-824-8282	KLC Output Filter KLC110BE 3PH, 60HZ, 600V Max, 110A Max Dwg # 100361DG Schematic # 25389 Enclosure type: 1
<b>DATE CODE</b>	

CUSTOMER IS RESPONSIBLE FOR INSTALLATION TO MEET ALL NATIONAL AND LOCAL ELECTRICAL CODES

NO	REVISION	DATE	BY	TOLERANCES EXCEPT AS NOTED	SCALE
				DECIMAL	
D	UPDATE LABELS	03/30/06	DSW	XX ±.03	
C	2326 UPDATE BOARD	07/12/05	DSW	.XXX±.010	
B	ECD#2002 REMOVE			FRACTIONAL ± 1/16	
A	FLAT WASHER'S	7/21/00	DSW	ANGULAR ± 1/2°	
	SEE ECD #1839	10-4-99	BW		

**TCI** 7878 N. 86th STREET  
 MILWAUKEE, WI 53224

ENCLOSURE  
 KLC110BE

DWG BY BW DATE 08-05-98 DWG NO 100361DG  
 SCALE TO FIT APPROV C