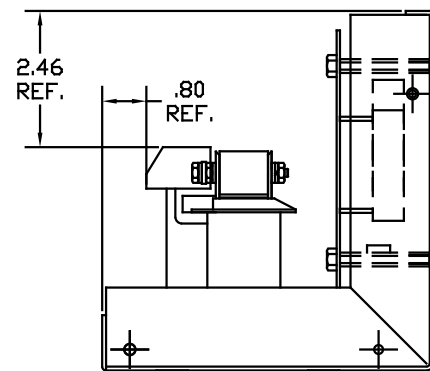
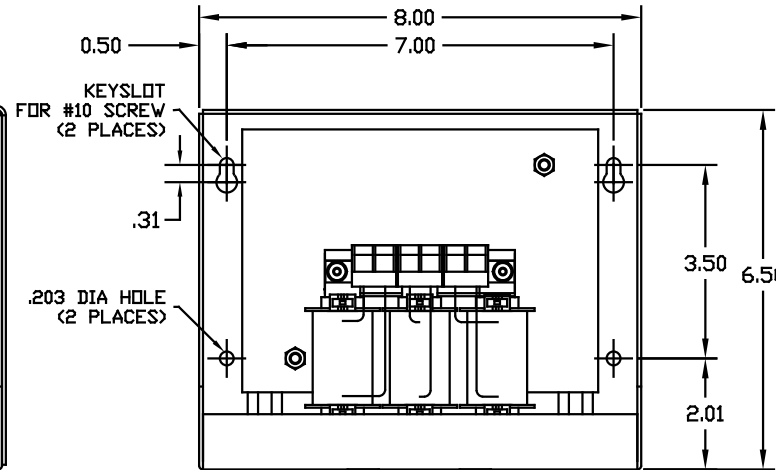
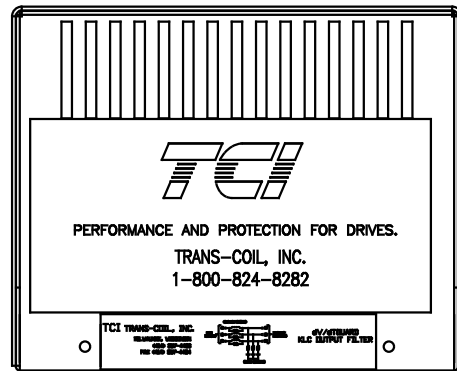
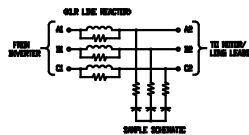


LOCATION FOR CUSTOMERS CONDUIT FITTING (BOTH SIDES)



BASE, REACTOR AND BOARD

TRANS-COIL, INC.
MILWAUKEE, WISCONSIN
(414) 357-4480
FAX (414) 357-4484



dV/dtGUARD
KLC OUTPUT FILTER

TCI	PERFORMANCE AND PROTECTION FOR DRIVES.
Trans-Coil, Inc. Milwaukee, WI www.transcoil.com 800-824-8282	KLC Output Filter KLC6BE 3PH, 60HZ, 600V Max, 6A Max Dwg # 100352DG Schematic # 25389 Enclosure type: 1
DATE CODE	

NOTES:
MATERIAL: #16GA STEEL
FINISH: BEIGE
TORQUE(LB-IN): 10
WIRE SIZE: #12-#18 AWG
APPROX WEIGHT: 7.75 LBS

CUSTOMER IS RESPONSIBLE FOR INSTALLATION TO MEET ALL NATIONAL AND LOCAL ELECTRICAL CODES

			TOLERANCES EXCEPT AS NOTED: DIMENSIONAL XX ±.03 .XXX±.01 FRACTIONAL ± 1/32 ANGULAR ± 1/2°	TCI 7878 N. 86th STREET MILWAUKEE, WI 53224
UPDATE LABELS	03/29/06	DSW		DWG. BY: RJC DATE: 04/04/01 Dwg. No: 100352DG
NO REVISION				SCALE: TO FIT APPROV: C 100352DG SHT. 1 of 1