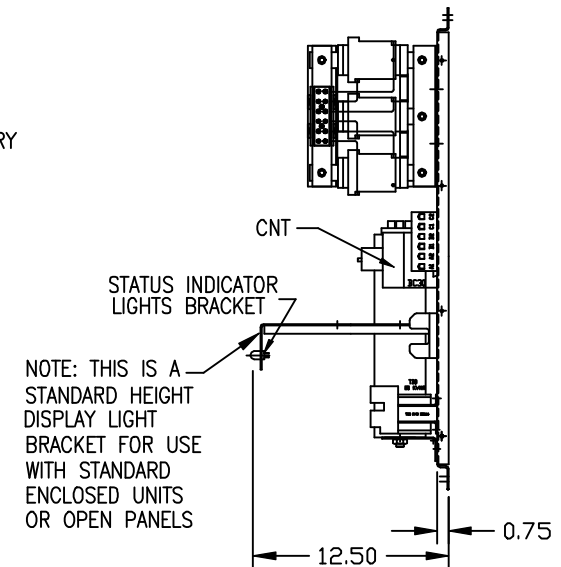


PB-POWER INPUT BLOCK:

WIRE RANGE-1 AWG, (7 TO 9 STRANDS ONLY).  
2 AWG TO 22 AWG.

TIGHTENING TORQUE: 1 AWG THRU 4 AWG, 35 IN-LB MAX.  
6 AWG THRU 14 AWG, 30 IN-LB MAX.  
16 AWG THRU 22 AWG, 25 IN-LB MAX.




SEE 21579-1 FOR WIRING CONNECTIONS  
SEE 21725-1 FOR SCHEMATIC

CUSTOMER IS RESPONSIBLE FOR PROPER COOLING OF FILTER COMPONENTS.  
CAPACITORS MAXIMUM AMBIENT 50°C

CUSTOMER IS RESPONSIBLE FOR INSTALLATION TO MEET ALL NATIONAL AND LOCAL ELECTRICAL CODES.

UNIT SPECIFICATIONS:					
KVAR	HARMONIC	VOLT	HZ	PHASE	HP
20	5TH	480	60	3	60
ENCLOSURE	WHITE OPEN PANEL				
	INDICATOR LIGHTS				
APPROX.WT. LBS.	140				

SYMBOL	TCI PART NUMBER
LR	KLR80CTB
TR	KTR20A65
CAP	23123
XFMR.	23891
Fu1,2,3	11006
Fu4,6	13180
Fu5	13364
CNT	23048

				TOLERANCES (EXCEPT AS NOTED) DECIMAL	 878 N. 86th STREET MILWAUKEE, WI 53224
				.XX ± .03 .XXX ± .01	
B	2152 ADD XFMR FBLK	02/18/02	DSW	FRACTIONAL ± 1/16	TCI, KH020A6L5B60, OPEN HARMONIC FILTER
A	SEE ECO #1951	3/30/2000	BW	ANGULAR ± 1/2°	
NO	REVISION	DATE	BY	SCALE 1/8"=1'	DRN. BY DSW DATE 03/11/99 DWG. NO. B 100611DG APRVD. SHT.1 OF 1