

<b>TCI</b> TRANS-COIL, INC MILWAUKEE WI WWW.transcoil.com 800-824-8282	<b>Performance and Protection for Drives.</b> KDR Drive Reactor			
	CATALOG# [ ] Motor Amps ---			
	3PH, 60Hz, 600V Max, [ ] A Max. 40C Amb Max, 155C Rise Terminal Torque [ ] LB-IN			
	A1 A2 B1 B2 C1 C2			

LABEL PLACED ON INSIDE WALL OF CABINET.

LUG WIRE RANGE TWO 350MCM-4, AL. OR CU.  
 FOR REACTOR.  
 TIGHTENING TORQUE. 275 LB-IN

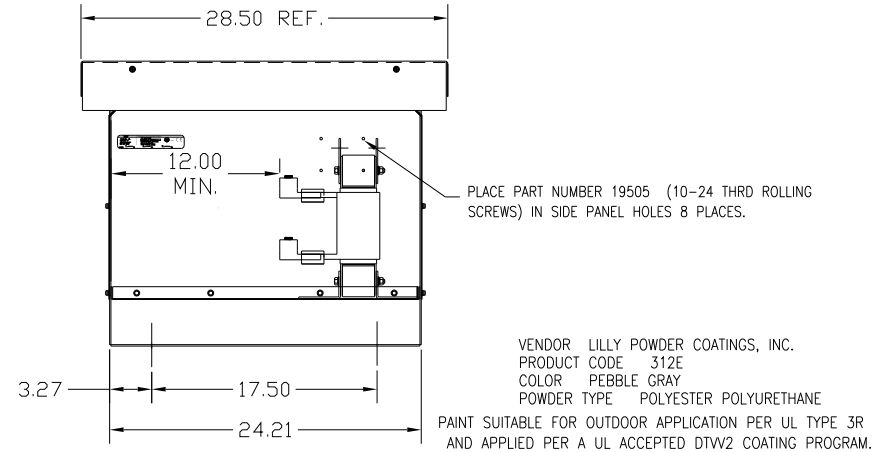
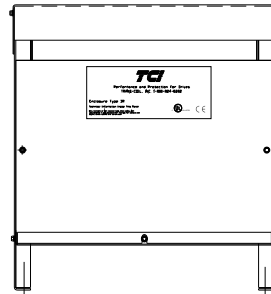
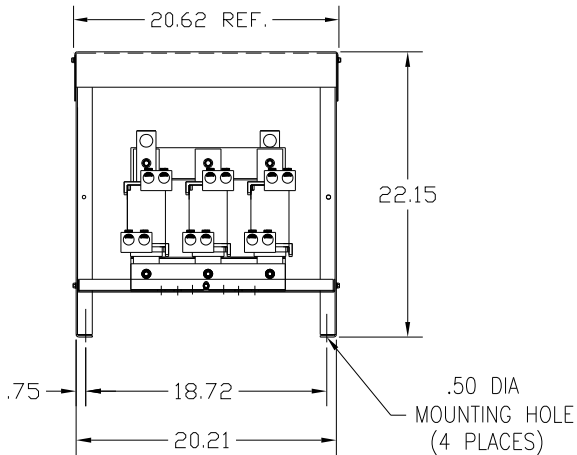
Performance and Protection for Drives TRANS-COIL, INC. 1-800-824-8282	
Enclosure Type 3R Technical Information Inside This Panel <small>Only accept or get reaction hole that comply with          requirements in UL 1009 for Type 3R enclosure and          other items listed on the label.</small>	

LABEL PLACED ON FRONT OF CABINET.

CATALOG NO	VOLTAGE	NEC MOTOR HP	NEC MOTOR CURRENT	WATTS LOSS	APPROX. WEIGHT-LBS
KDRULL3HE3R	480	350	414	750	180
KDRULL1PE3R	480	350	414	NOTE 1:	165
KDRULL2PE3R	480	400	477	NOTE 1:	175
KDRULL31PE3R	575	400	382	NOTE 1:	165
KDRULL35PE3R	575	450	412	NOTE 1:	165
KDRULL32PE3R	575	500	472	NOTE 1:	165

NOTE 1: WATTS LOSS WILL VARY DUE TO FUNDAMENTAL FREQUENCY, CARRIER FREQUENCY AND OTHER SYSTEM CHARACTERISTICS. KDR DRIVE REACTORS COMPLY WITH THE THERMAL AND ALTITUDE STANDARDS SET FORTH BY NEMA ST20-1992..

NEC MOTOR CURRENTS SHOWN IN THE 208/240 VOLT CHART ARE BASED ON HORSEPOWER AT 208 VOLT. 575/600 VOLT CHART USE THE 575 VOLT CURRENT RATING.



CUSTOMER IS RESPONSIBLE FOR INSTALLATION TO MEET ALL LOCAL AND NATIONAL CODES

				TOLERANCES (EXCEPT AS NOTED) DECIMAL .XX ± .03 .XXX ± .01 FRACTIONAL ± 1/32 ANGULAR ± 1/2°		7878 N. 86th STREET MILWAUKEE, WI 53224 <b>KDR FRAME L (ILSCO LUGS)          TYPE 3R ENCLOSURE</b>	
NO		REVISION	DATE	BY	DRN BY DSW		
					SCALE TO FIT	APPRVD.	KDRLE3R-82DG SHT. 1 OF 1