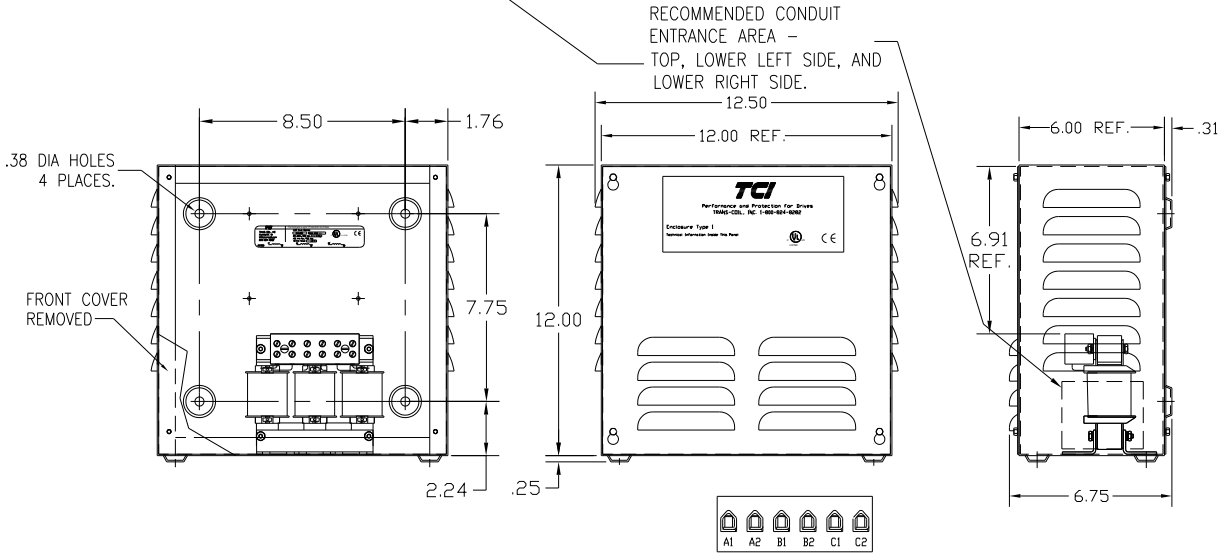


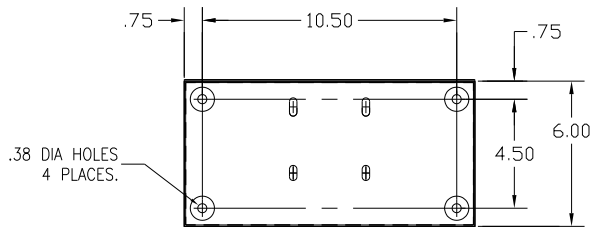
LABEL PLACED ON INSIDE WALL OF CABINET.



TERMINAL BLK MARKING

NOTE: A1, A2, B1, B2, C1, C2, TERMINAL BLOCK FOR REFERENCE ONLY.

BLOCK WIRE RANGE FOR REACTOR AND TIGHTENING TORQUE.	#18-#4 AWG 20 LB-IN
---	------------------------



CUSTOMER IS RESPONSIBLE FOR INSTALLATION TO MEET ALL LOCAL AND NATIONAL CODES

CATALOG NO	VOLTAGE	NEC MOTOR HP	NEC MOTOR CURRENT	WATTS LOSS	APPROX. WEIGHT-LBS
KDRULB2LE01	480	15	21	65	18.50
KDRULB1LE01	480	20	27	79	18.50
KDRULB2HE01	480	15	21	133	17.50
KDRULB1PE01	480	10	14	NOTE: 1	17.50
KDRULB22LE01	208/240	5.0	16.7	38	18.50
KDRULB23LE01	208/240	7.5	24.2	48	18.50
KDRULB25HE01	208/240	5.0	16.7	53.1	18.50
KDRULB26HE01	208/240	7.5	24.2	66.5	18.50
KDRULB45LE01	575/600	15	17	66.2	18.50
KDRULB44LE01	575/600	20	22	71.2	18.50
KDRULB43LE01	575/600	25	27	76.7	18.50
KDRULB42HE01	575/600	7.5	9	61	18.50
KDRULB43HE01	575/600	10	11	71	18.50
KDRULB44HE01	575/600	15	17	73	18.50

NOTE 1: WATTS LOSS WILL VARY DUE TO FUNDAMENTAL FREQUENCY, CARRIER FREQUENCY AND OTHER SYSTEM CHARACTERISTICS.

KDR DRIVE REACTORS COMPLY WITH THE THERMAL AND ALTITUDE STANDARDS SET FORTH BY NEMA ST20-1992..

NEC MOTOR CURRENTS SHOWN IN THE 208/240 VOLT CHART ARE BASED ON HORSEPOWER AT 208 VOLT. 575/600 VOLT CHART USE THE 575 VOLT CURRENT RATING.

VENDOR LILLY POWDER COATINGS, INC.
 PRODUCT CODE 312E
 COLOR PEBBLE GRAY
 POWDER TYPE POLYESTER POLYURETHANE

PAINT SUITABLE FOR OUTDOOR APPLICATION PER UL TYPE 3R AND APPLIED PER A UL ACCEPTED DTW2 COATING PROGRAM.

				TOLERANCES (EXCEPT AS NOTED):		7878 N. 86th STREET MILWAUKEE, WI 53224
				DECIMAL		
				.XX ±.03		
				.XXX±.01		
				FRACTIONAL ± 1/32		
				ANGULAR ± 1/2°		DRN BY DSW DATE 06/21/04 DWG. NO. B KDRULENCL-4DG SCALE TO FIT APRVD. SHT. 1 of 1
NO	REVISION	DATE	BY			