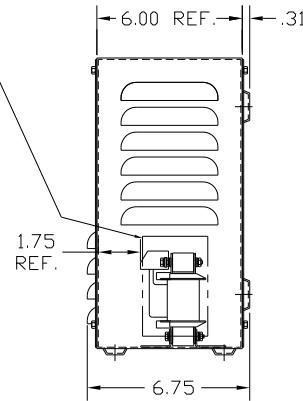
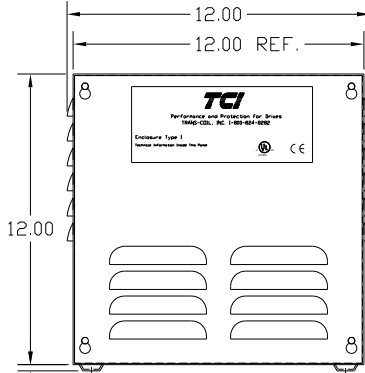
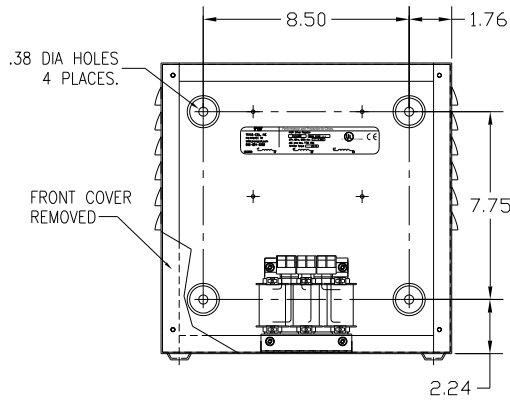


LABEL PLACED ON INSIDE WALL OF CABINET.

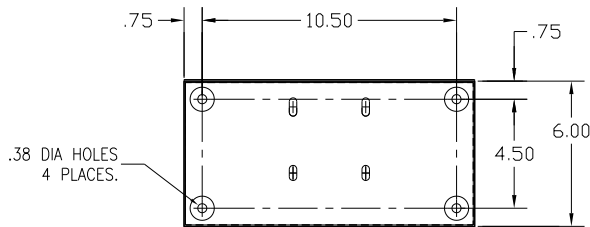
RECOMMENDED CONDUIT ENTRANCE AREA - TOP, LOWER LEFT SIDE, AND LOWER RIGHT SIDE.



TERMINAL BLK MARKING

NOTE: A1, A2, B1, B2, C1, C2, TERMINAL BLOCK FOR REFERENCE ONLY.

BLOCK WIRE RANGE #12-#18 AWG  
TIGHTENING TORQUE. 10 LB-IN



VENDOR LILLY POWDER COATINGS, INC.  
PRODUCT CODE 312E  
COLOR PEBBLE GRAY  
POWDER TYPE POLYESTER POLYURETHANE

PAINT SUITABLE FOR OUTDOOR APPLICATION PER UL TYPE 3R AND APPLIED PER A UL ACCEPTED DTW2 COATING PROGRAM.

CUSTOMER IS RESPONSIBLE FOR INSTALLATION TO MEET ALL LOCAL AND NATIONAL CODES

CATALOG NO	VOLTAGE	NEC MOTOR HP	NEC MOTOR CURRENT	WATTS LOSS	APPROX. WEIGHT-LBS	TORQUE (LB-IN)
KDRULA54LE01	208/240	0.5	2.40	7	14.50	10
KDRULA53LE01	208/240	0.75	3.50	12	14.50	10
KDRULA25LE01	208/240	1.0	4.60	11	14.50	10
KDRULA26LE01	208/240	1.5	6.60	18	14.50	10
KDRULA27LE01	208/240	2.0	7.50	21	14.50	10
KDRULA28LE01	208/240	3.0	10.6	29	14.50	10
KDRULA54HE01	208/240	0.5	2.40	14	14.50	10
KDRULA53HE01	208/240	0.75	3.50	16.8	14.50	10
KDRULA25HE01	208/240	1.0	4.60	23.6	14.50	10
KDRULA27HE01	208/240	1.5	6.60	30.6	14.50	10
KDRULA26HE01	208/240	2.0	7.50	30.5	14.50	10
KDRULA28HE01	208/240	3.0	10.6	43.1	14.50	10
KDRULA55LE01	575/600	0.5	0.90	6	14.50	10
KDRULA56LE01	575/600	0.75	1.30	9.3	14.50	10
KDRULA50LE01	575/600	1.0	1.70	12	14.50	10
KDRULA51LE01	575/600	1.5	2.40	19	14.50	10
KDRULA46LE01	575/600	2.0	2.70	22	14.50	10
KDRULA52LE01	575/600	3.0	3.90	23.3	14.50	10
KDRULA47LE01	575/600	5.0	6.10	34.7	14.50	10
KDRULA48LE01	575/600	7.50	9.0	42.9	14.50	10
KDRULA49LE01	575/600	10.0	11.0	43.8	14.50	10
KDRULA55HE01	575/600	0.5	0.90	9	14.50	10
KDRULA52HE01	575/600	0.75	1.30	13	14.50	10
KDRULA50HE01	575/600	1.0	1.70	17	14.50	10
KDRULA51HE01	575/600	1.5	2.40	26	14.50	10
KDRULA43HE01	575/600	2.0	2.70	24	14.50	10
KDRULA44HE01	575/600	3.0	3.90	35	14.50	10
KDRULA45HE01	575/600	5.0	6.10	48	14.50	10

NOTE 1: WATTS LOSS WILL VARY DUE TO FUNDAMENTAL FREQUENCY, CARRIER FREQUENCY AND OTHER SYSTEM CHARACTERISTICS.

KDR DRIVE REACTORS COMPLY WITH THE THERMAL AND ALTITUDE STANDARDS SET FORTH BY NEMA ST20-1992..

NEC MOTOR CURRENTS SHOWN IN THE 208/240 VOLT CHART ARE BASED ON HORSEPOWER AT 208 VOLT. 575/600 VOLT CHART USE THE 575 VOLT CURRENT RATING.

				TOLERANCES (EXCEPT AS NOTED)		7878 N. 86th STREET MILWAUKEE, WI 53224  <b>KDR FRAME A (TERM BLOCK) TYPE1 ENCLOSURE (SMALL)</b>	
				DECIMAL			
				.XX ±.03 .XXX±.01			
				FRACTIONAL ± 1/32			
				ANGULAR ± 1/2°		DRN BY DSW DATE 06/21/04 DWG. NO. D KDRULENCL-2DG SCALE TO FIT APRVD. SHT. 1 of 1	
NO	REVISION	DATE	BY				