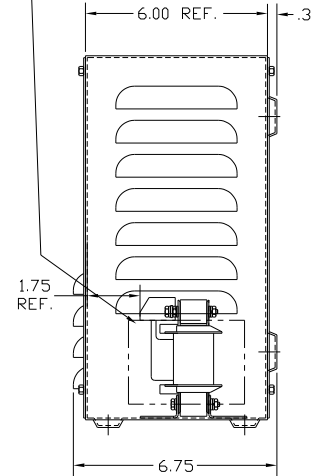
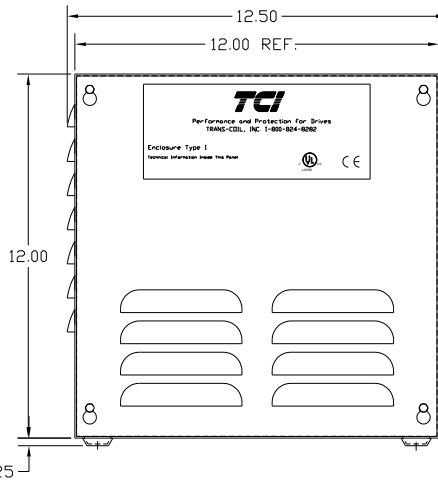
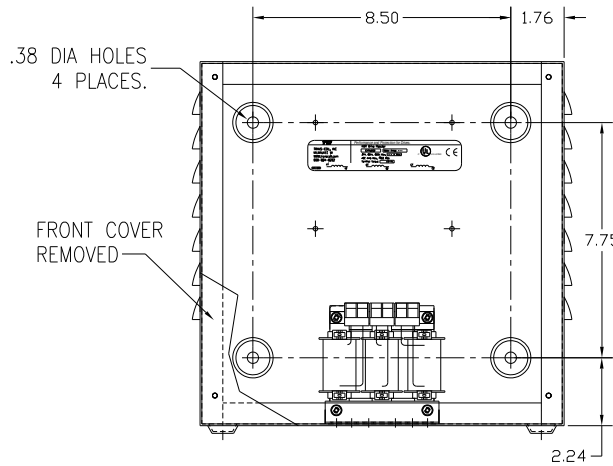


LABEL PLACED ON INSIDE WALL OF CABINET.

RECOMMENDED CONDUIT
ENTRANCE AREA
TOP, LOWER LEFT SIDE, AND
LOWER RIGHT SIDE.



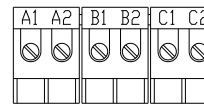
CATALOG NO	VOLTAGE	NEC MOTOR HP	NEC MOTOR CURRENT	WATTS LOSS	APPROX. WEIGHT-LBS	TORQUE (LB-IN)
KDRULA6LE01	480	0.5	1.1	5.6	14.50	10
KDRULA7LE01	480	0.75	1.6	10.0	14.50	10
KDRULA8LE01	480	1.0	2.1	10.4	14.50	10
KDRULA9LE01	480	1.5	3.0	17.0	14.50	10
KDRULA1LE01	480	2.0	3.4	19.0	14.50	10
KDRULA2LE01	480	3.0	4.8	23.0	14.50	10
KDRULA3LE01	480	5.0	7.6	49.0	14.50	10
KDRULA4LE01	480	7.5	11.0	40.0	14.50	10
KDRULA5LE01	480	10.0	14.0	64.0	14.50	10
KDRULA6HE01	480	0.5	1.1	9	13.50	10
KDRULA7HE01	480	0.75	1.6	15	14.50	10
KDRULA8HE01	480	1.0	2.1	12	14.50	10
KDRULA9HE01	480	1.5	3.0	23	14.50	10
KDRULA1HE01	480	2.0	3.4	33	14.50	10
KDRULA2HE01	480	3.0	4.8	38	14.50	10
KDRULA3HE01	480	5.0	7.6	80	14.50	10
KDRULA4HE01	480	7.5	11.0	77	15.50	10
KDRULA5HE01	480	10.0	14.0	111	15.50	10
KDRULA1PE01	480	2.0	3.4	NOTE: 1	14.50	10
KDRULA2PE01	480	3.0	4.8	NOTE: 1	14.50	10
KDRULA3PE01	480	5.0	7.6	NOTE: 1	14.50	10
KDRULA4PE01	480	7.5	11.0	NOTE: 1	15.50	10
KDRULA31PE01	575	2.0	2.7	NOTE: 1	14.50	10
KDRULA35PE01	575	3.0	3.9	NOTE: 1	14.50	10
KDRULA33PE01	575	5.0	6.1	NOTE: 1	14.50	10
KDRULA34PE01	575	7.5	9	NOTE: 1	15.50	10
KDRULA36PE01	575	10	11	NOTE: 1	15.50	10

NOTE 1: WATTS LOSS WILL VARY DUE TO FUNDAMENTAL FREQUENCY,
CARRIER FREQUENCY AND OTHER SYSTEM CHARACTERISTICS.
KDR DRIVE REACTORS COMPLY WITH THE THERMAL AND
ALTITUDE STANDARDS SET FORTH BY NEMA S120-1992..

NEC MOTOR CURRENTS SHOWN IN THE 208/240 VOLT CHART
ARE BASED ON HORSEPOWER AT 208 VOLT; 575/600 VOLT
CHART USE THE 575 VOLT CURRENT RATING.

VENDOR LILLY POWDER COATINGS, INC.
PRODUCT CODE 312E
COLOR PEBBLE GRAY
POWDER TYPE POLYESTER POLYURETHANE

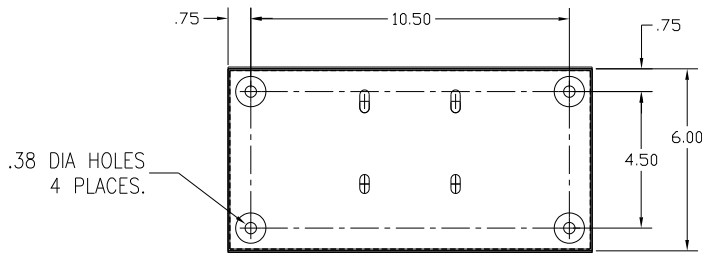
PAINT SUITABLE FOR OUTDOOR APPLICATION PER UL TYPE 3R
AND APPLIED PER A UL ACCEPTED DTW2 COATING PROGRAM.



BLOCK WIRE RANGE
FOR REACTOR AND
TIGHTENING TORQUE. #12-#18 AWG
10 LB-IN

TERMINAL BLK MARKING

NOTE: A1, A2, B1, B2, C1, C2,
TERMINAL BLOCK
FOR REFERENCE ONLY.



CUSTOMER IS RESPONSIBLE FOR INSTALLATION
TO MEET ALL LOCAL AND NATIONAL CODES

				TOLERANCES (EXCEPT AS NOTED)		7878 N. 86th STREET MILWAUKEE, WI 53224		
				DECIMAL				
				.XX ± .03		KDR FRAME A (TERM BLOCK) TYPE 1 ENCLOSURE (SMALL)		
				.XXX ± .01				
				FRACTIONAL ± 1/32				
				ANGULAR ± 1/2°		DRN BY SCALE 1/4"=1"	DATE 06/24/04 APPRVD.	DWG NO. DKDRULENCL-1DG SHT. 1 OF 1
NO	REVISION	DATE	BY					